

**gmp**

von Gerkan, Marg and Partners  
Architects

Starting with a spectacular  
success being Tegel Airport  
opened 1974 in Berlin,  
Germany ...





Volkwin Marg

Meinhard von Gerkan







. . . the practice designed and  
constructed nearly 500 projects  
to date.





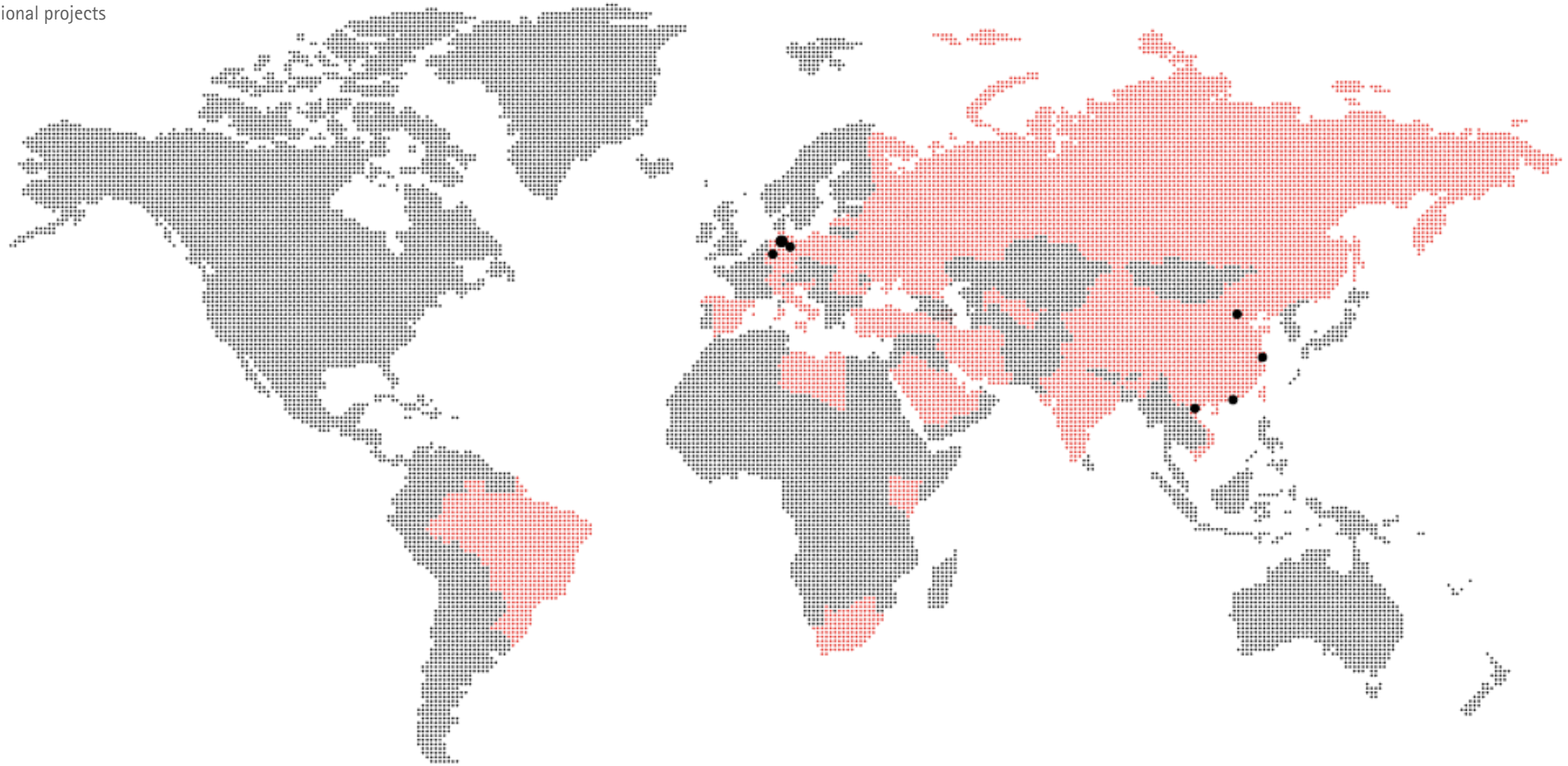
... and over 500 employees from  
more than 50 countries ...

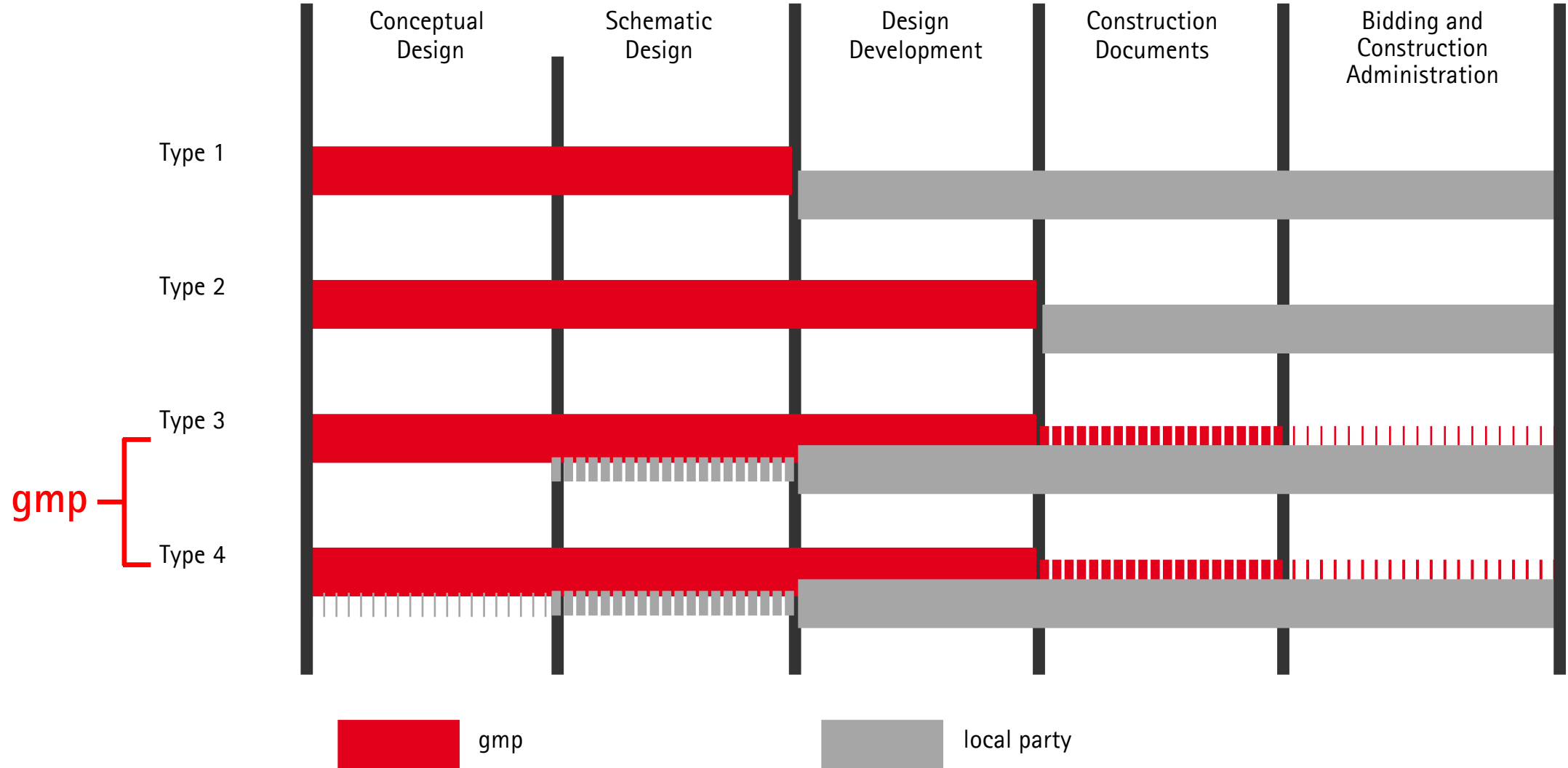


... in seven offices and two temporary field offices.



Work split  
International projects





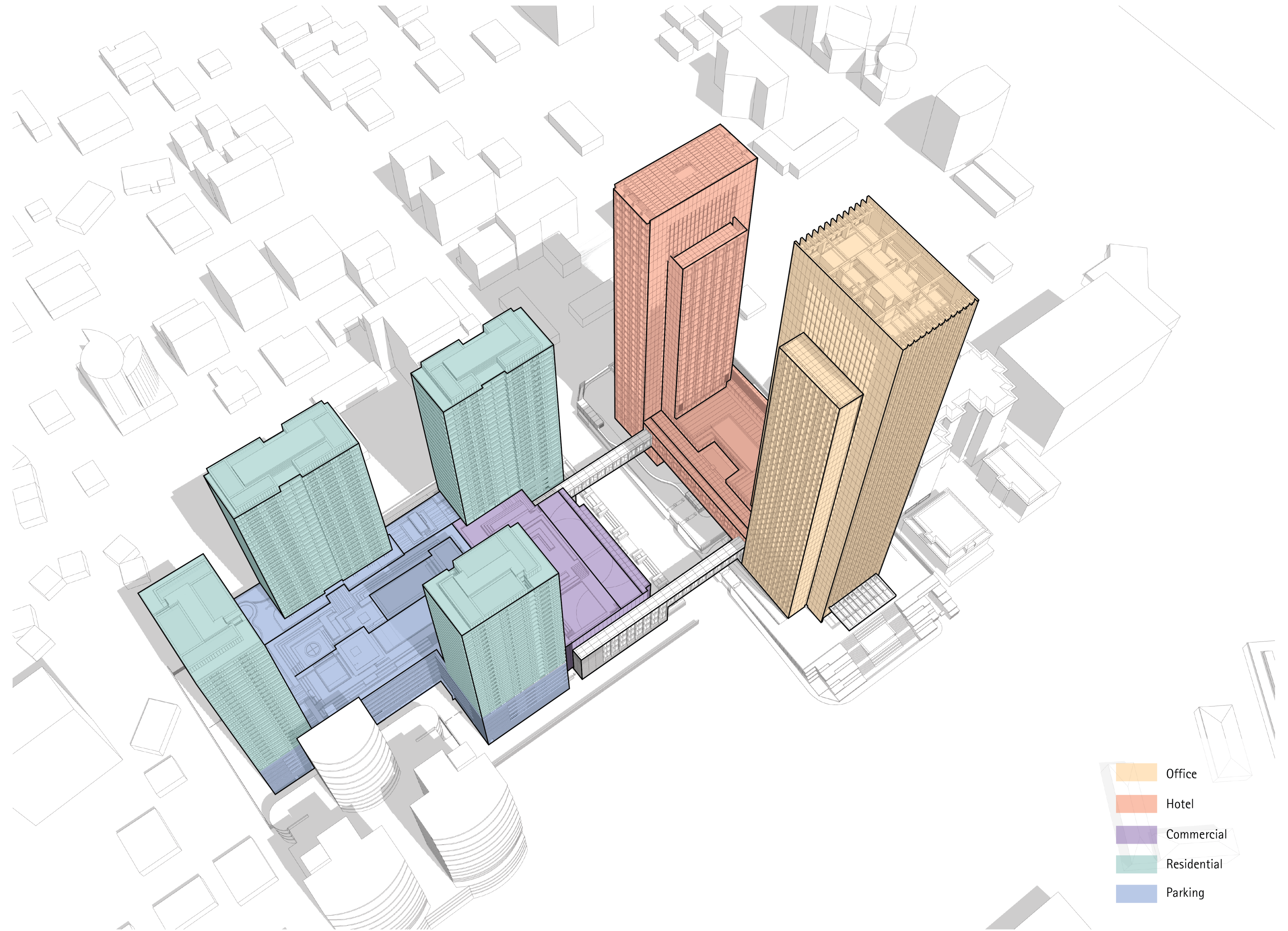
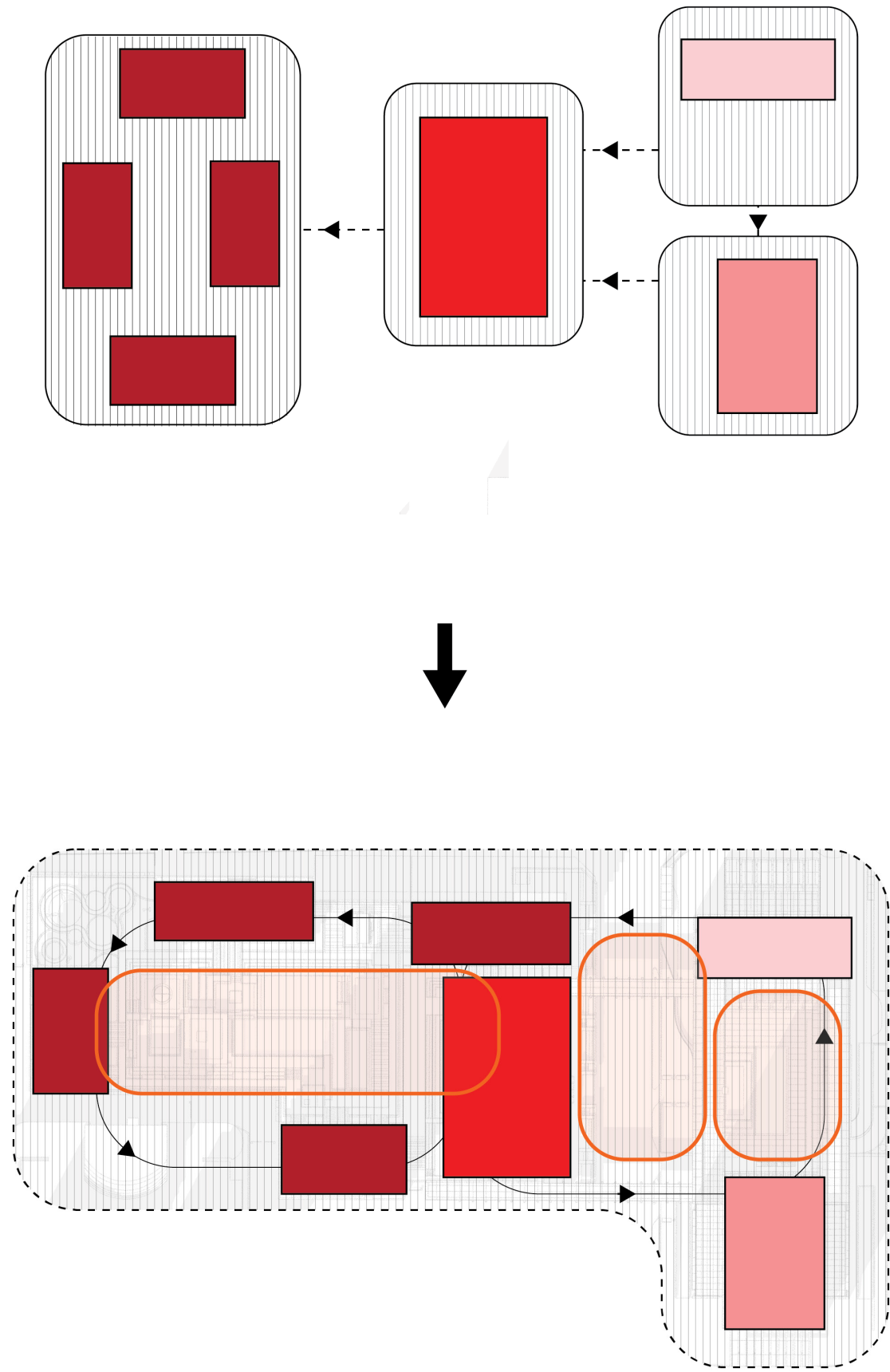


# GTC Nairobi





# GTC Nairobi



- Office
- Hotel
- Commercial
- Residential
- Parking



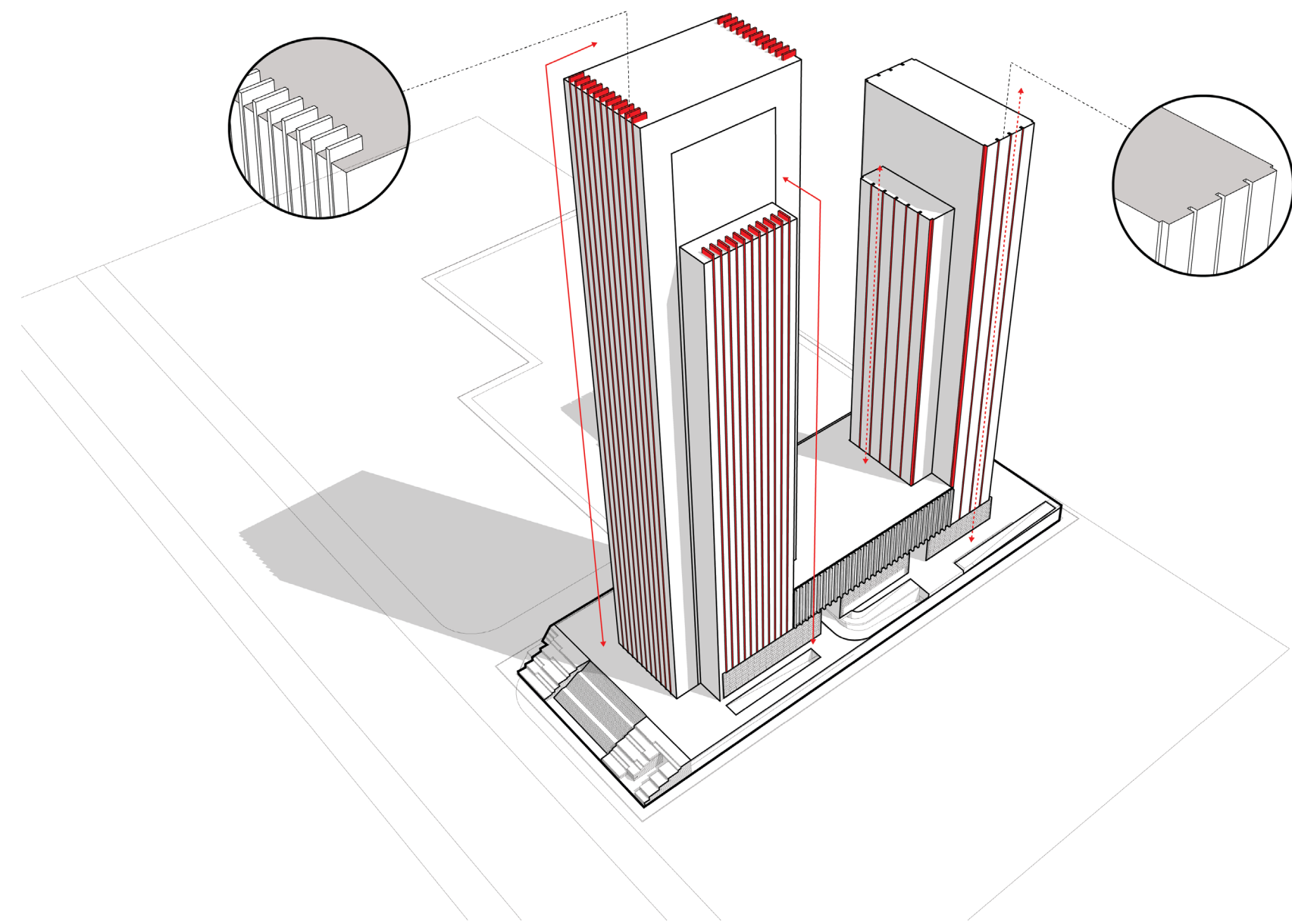
GTC Nairobi



gmp



# GTC Nairobi



gmp





GTC Nairobi



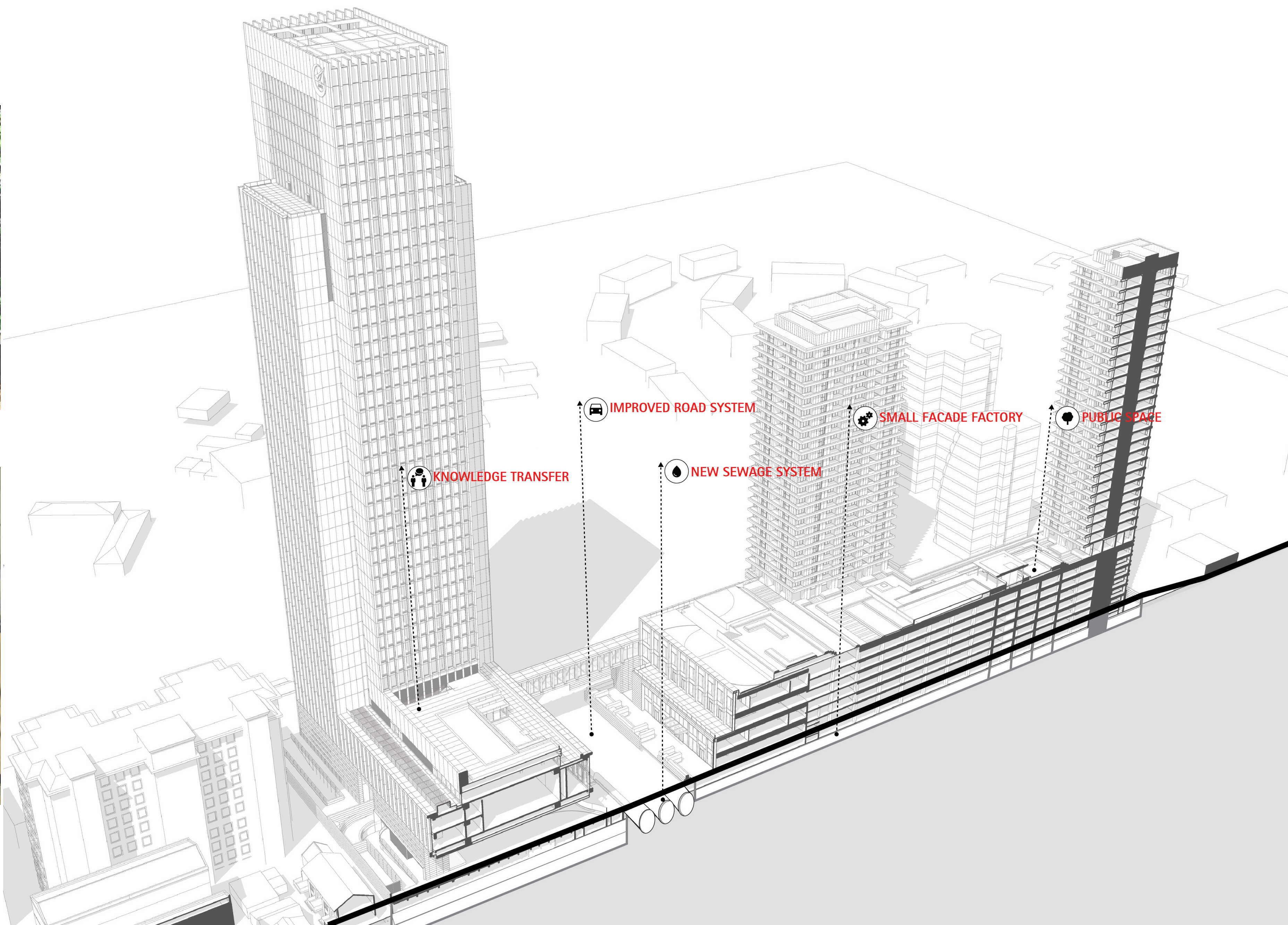
gmp







GTC Nairobi  
Social sustainability

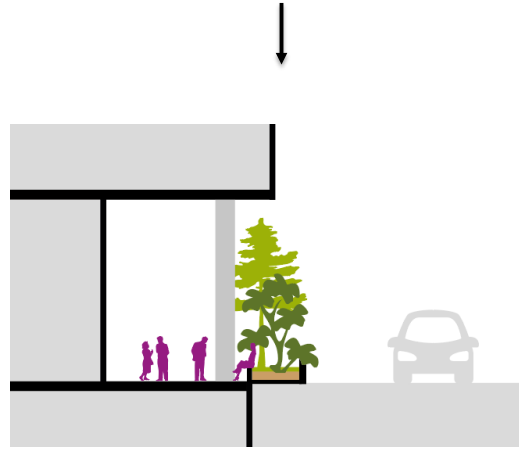
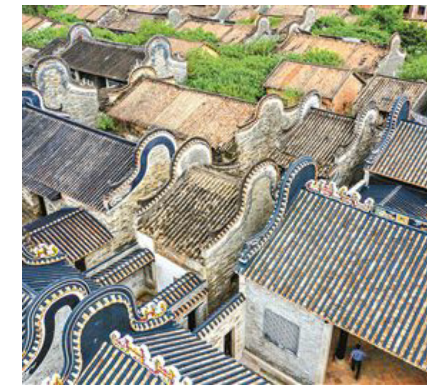
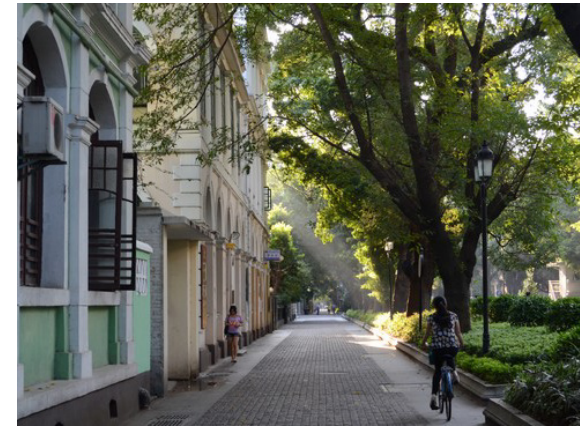




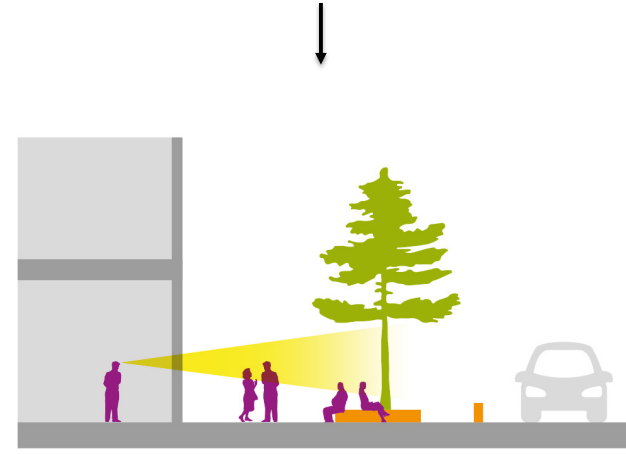
CSCEC HQ, Guangzhou, China



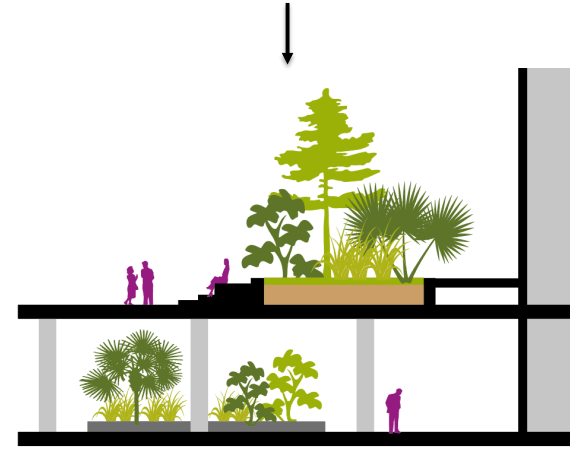




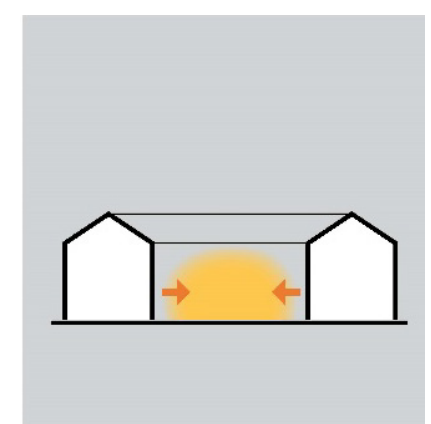
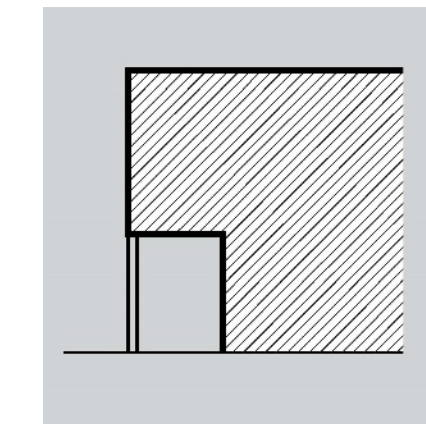
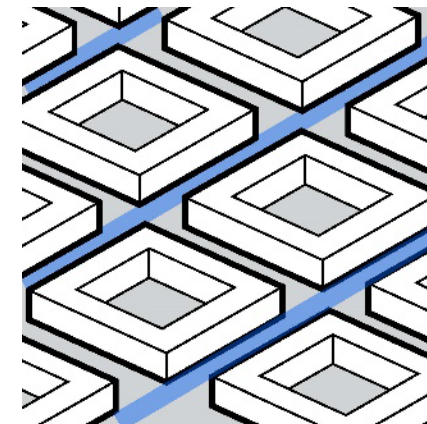
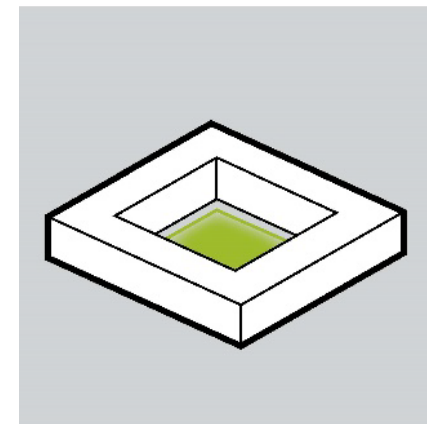
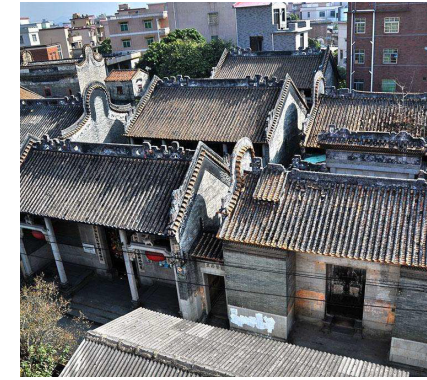
Arcades



Urban Greening



Roofgarden

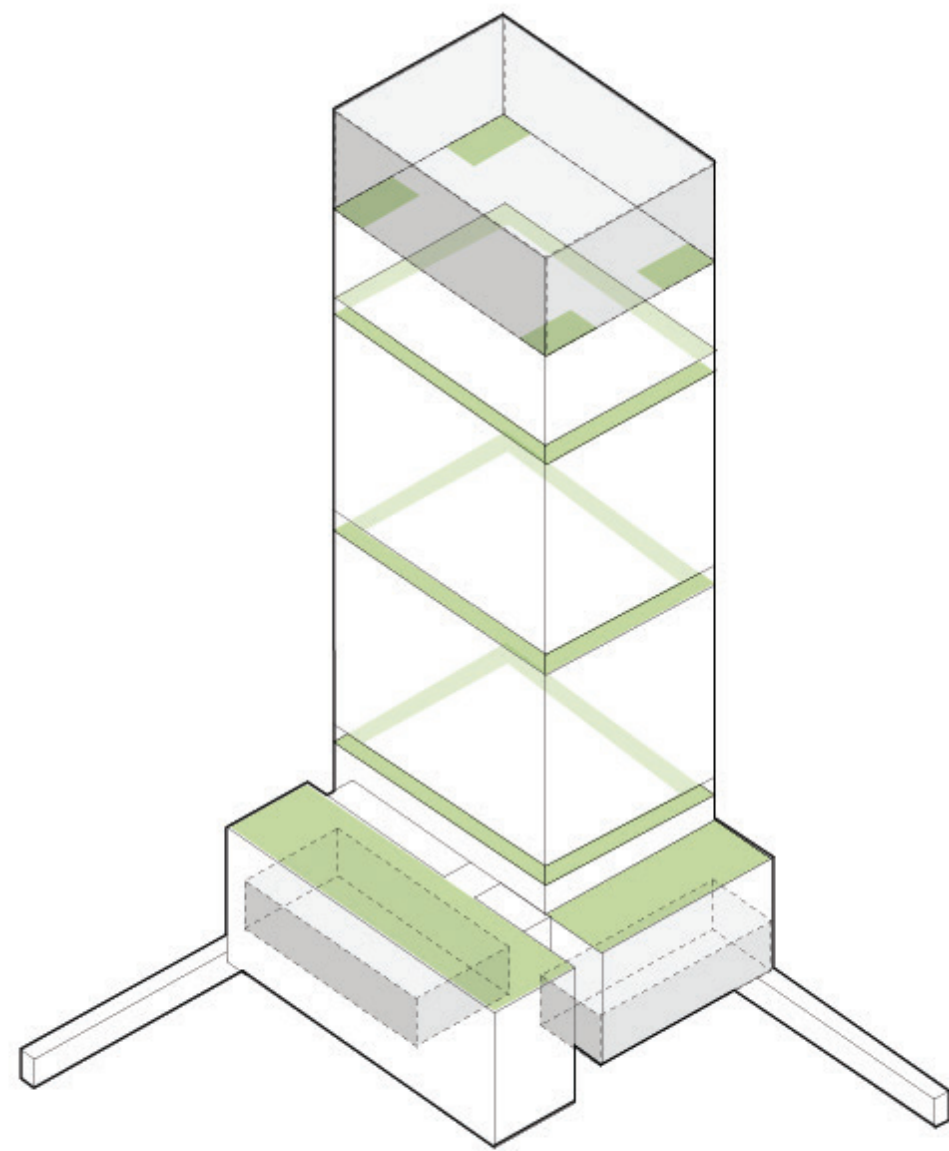


Yard

Cold Lane

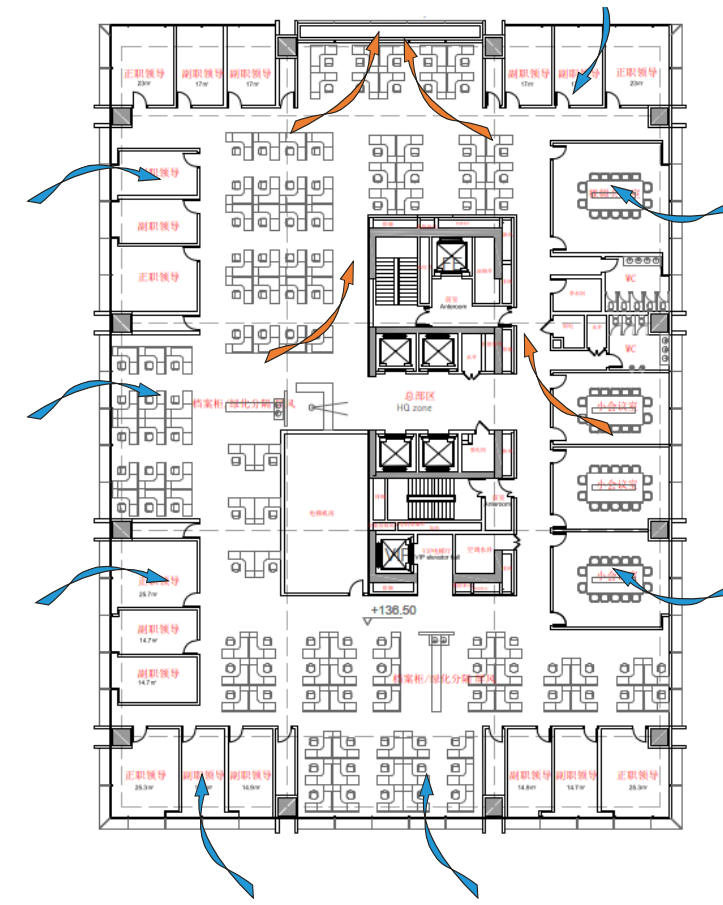
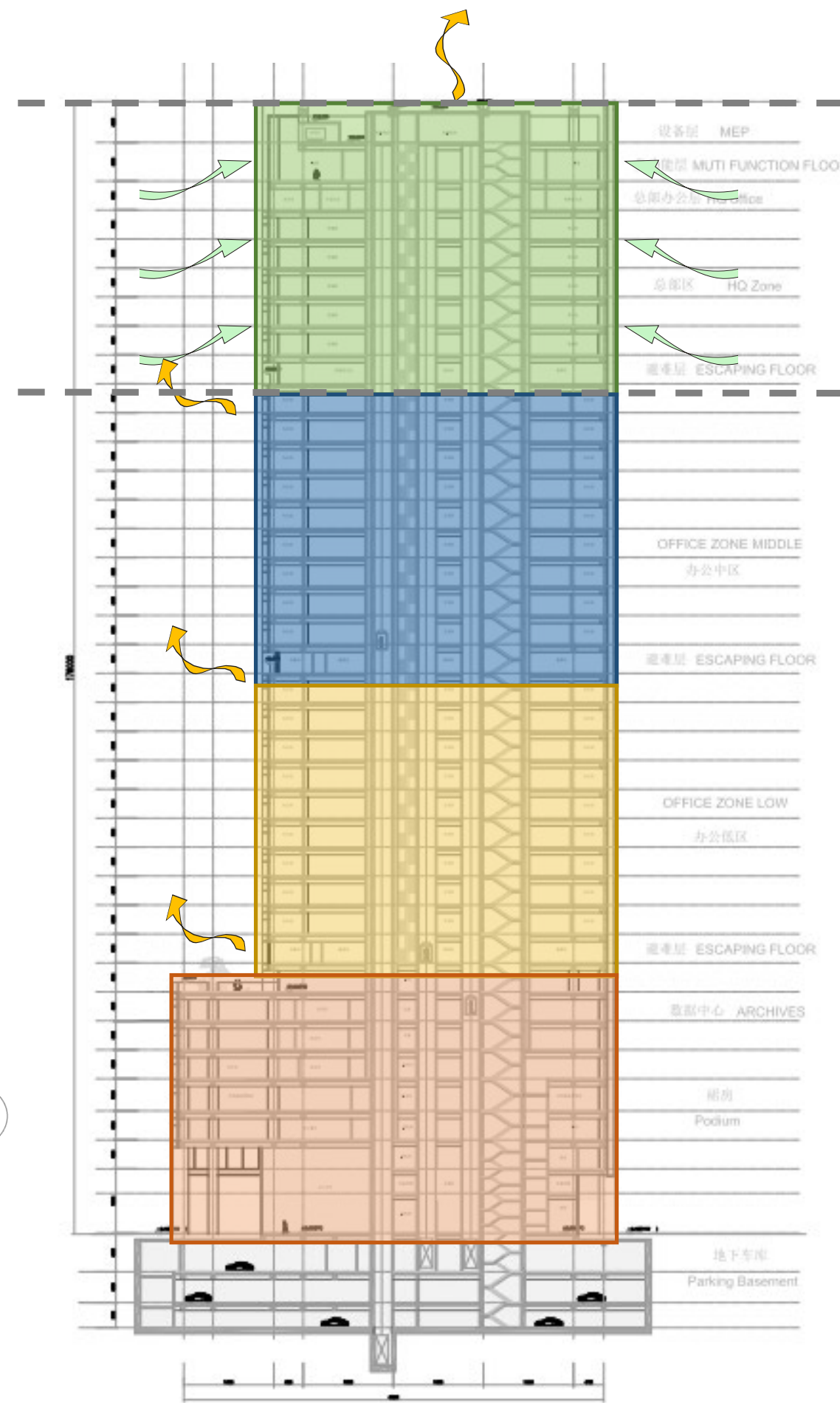
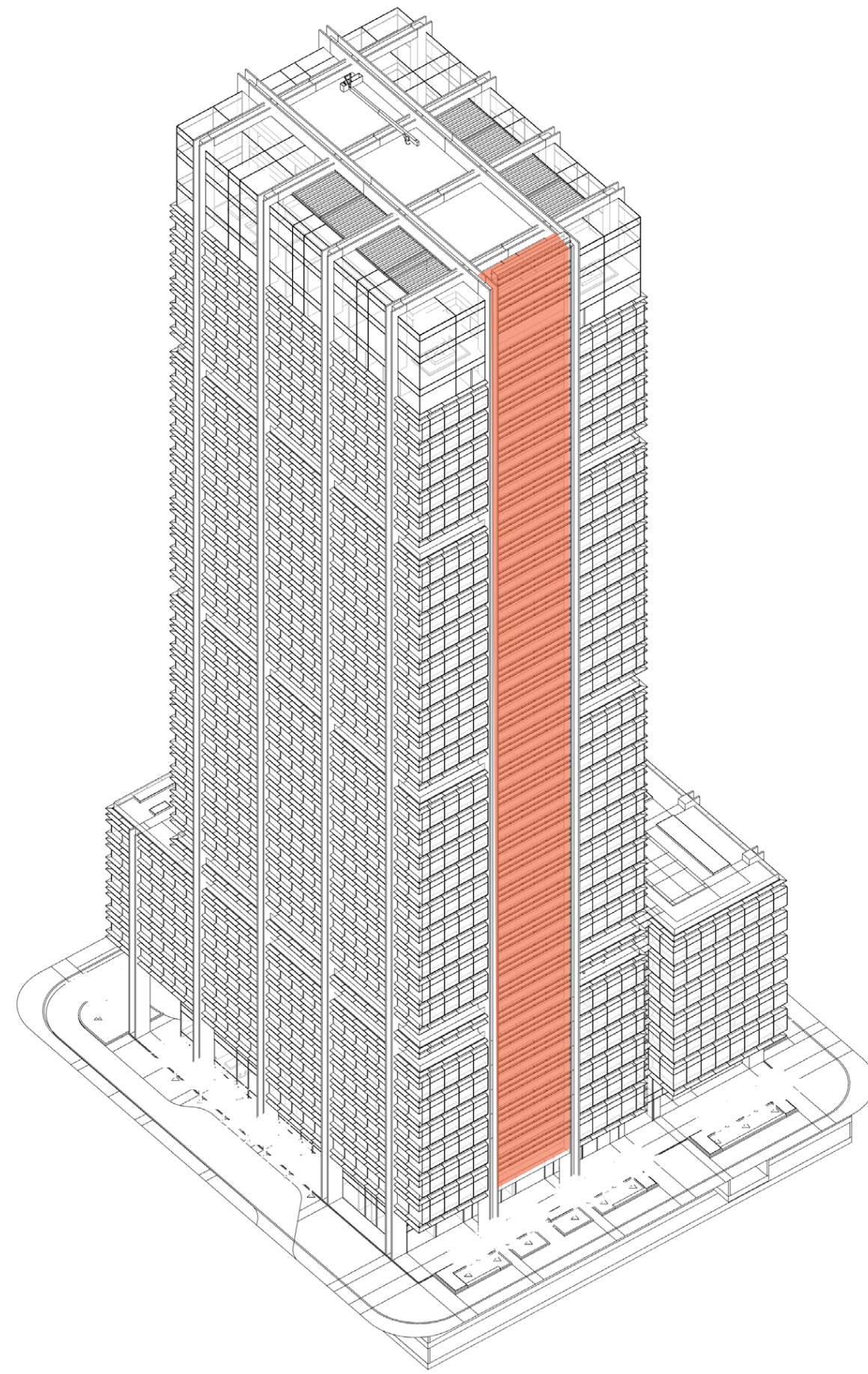
Arcade

Hall

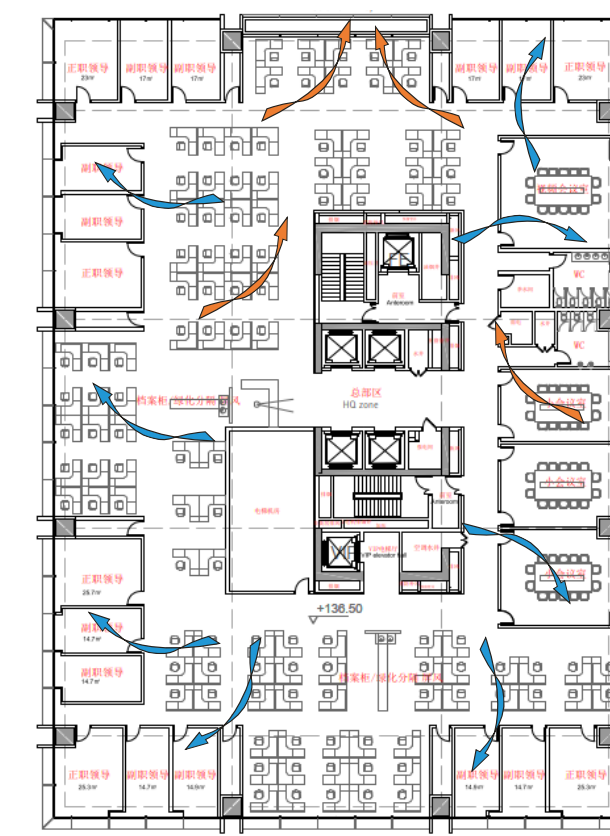




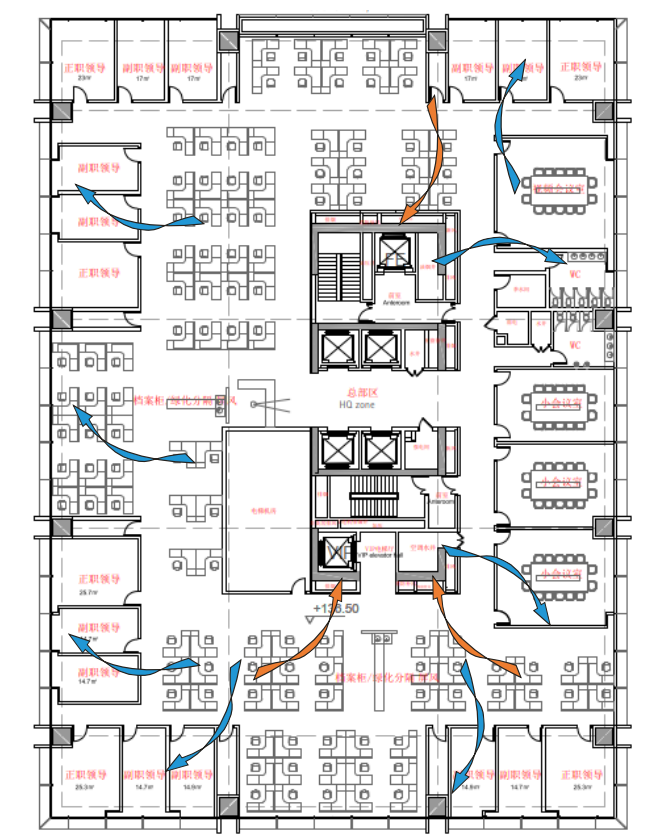
# CSCEC HQ, Guangzhou, China



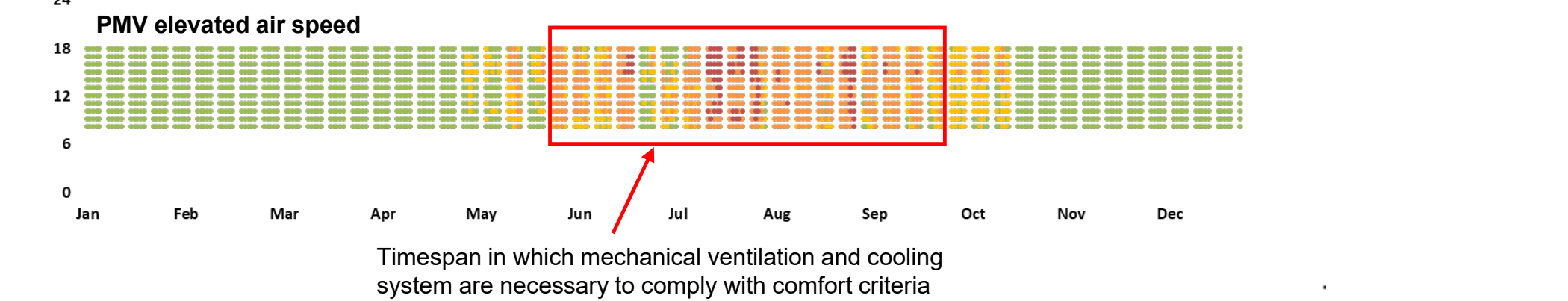
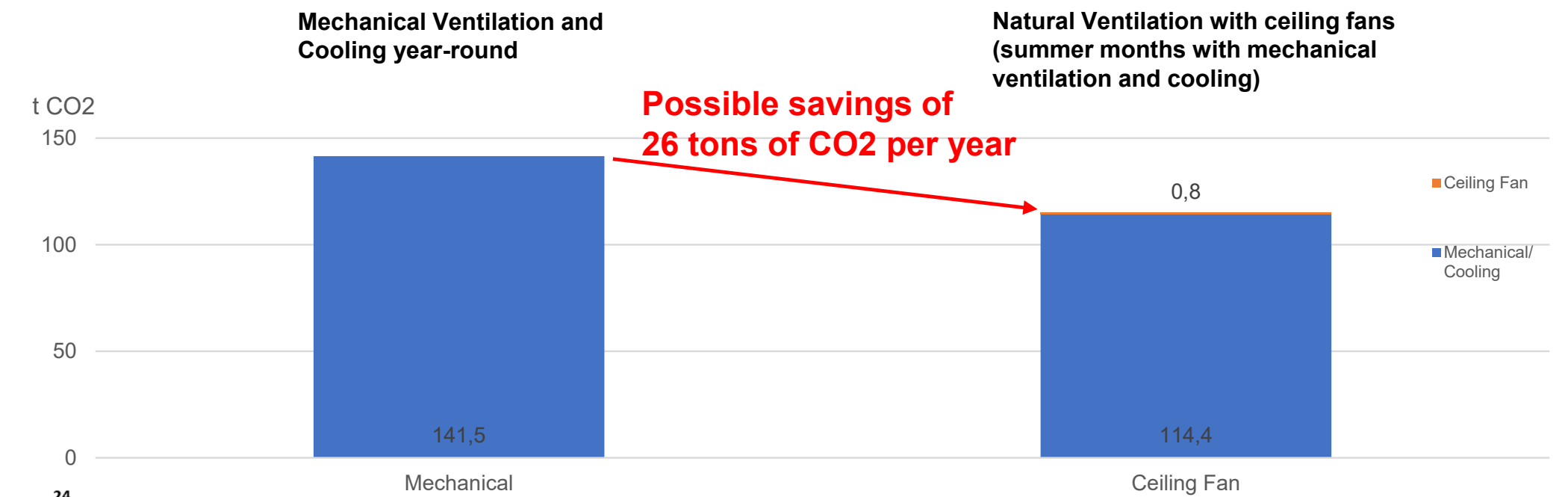
Natural ventilation via facade and solar chimney



Hybrid ventilation (mechanical air supply, exhaust air via solar chimney)

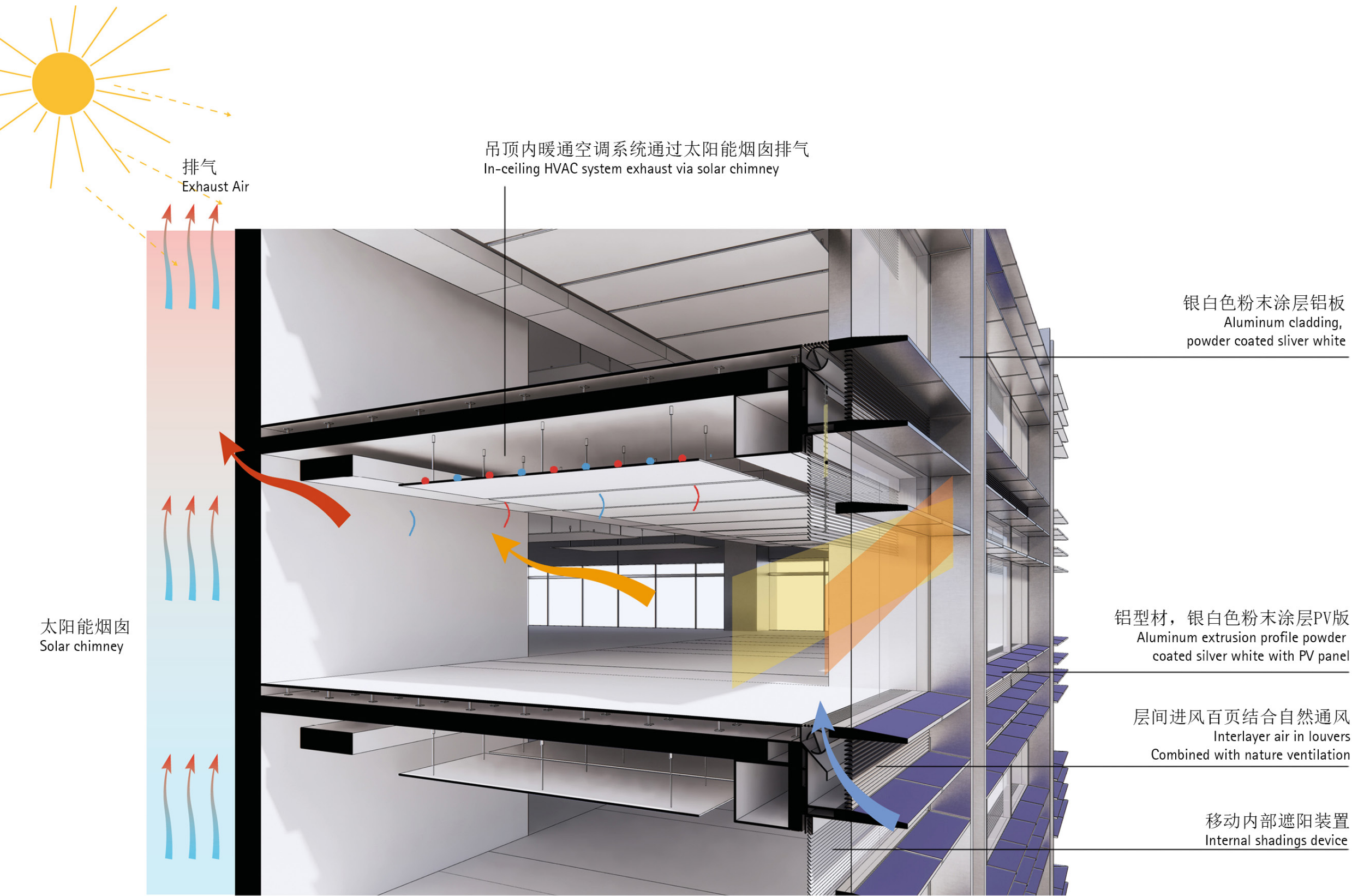


Mechanical ventilation



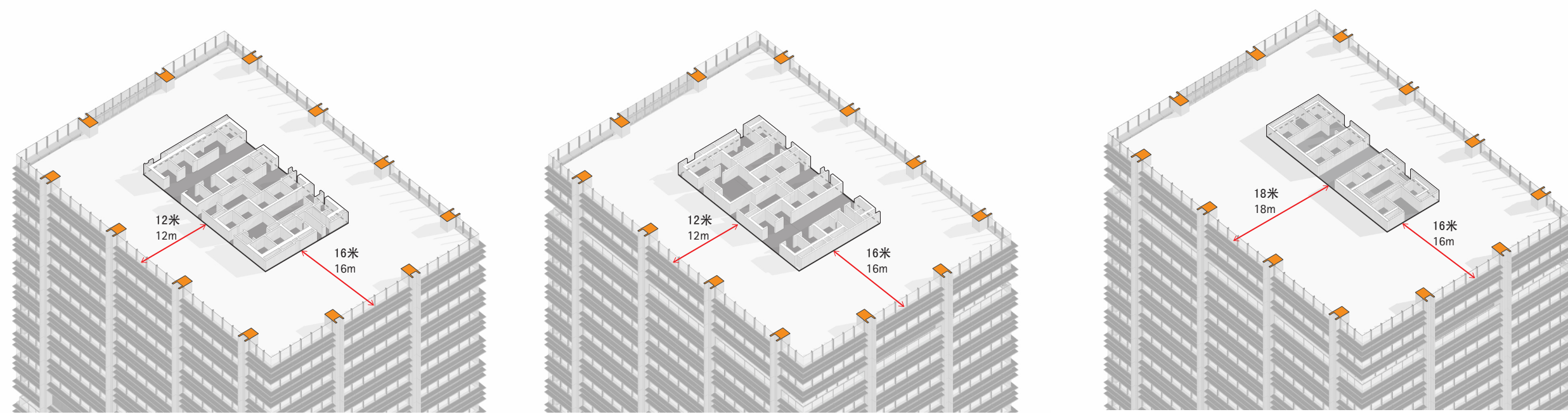


# CSCEC HQ, Guangzhou, China





# CSCEC HQ, Guangzhou, China



Low zone

Middle zone

High zone





CSCEC HQ, Guangzhou, China



gmp



[www.gmp.de](http://www.gmp.de)