

ARCHITECTS' COUNCIL OF EUROPE

2019
ANNUAL REPORT
& 2020
OUTLOOK



ARCHITECTS' COUNCIL OF EUROPE
CONSEIL DES ARCHITECTES D'EUROPE

Founded in Treviso, Italy, in May 1990, the **ARCHITECTS' COUNCIL OF EUROPE** (ACE) is the representative organisation for the architectural profession at European level.

ACE'S MISSION IS

- to influence, through advocacy, EU legislation & policies that impact on our strategic priorities;
- to be an influential and valued source of authoritative information for the architectural profession in Europe;
- to act as the unified voice of the architectural profession in the European institutions;
- to be an effectively networked representative body for EU architects and practices;
- to create an enabling practice and regulatory environment for architects & practices;
- to demonstrate the role of architects in creating a truly competitive, enriching and sustainable Europe.

TO THIS END, ACE APPLIES ITS CORE VALUE SETS, WITH THE AIM OF BEING;

- credible, relevant, reliable;
- informed, influential, timely;
- innovative, strategic, visionary

ACE's Vision is to make a difference, and to advance architecture as a strategy for innovation, leading to greater competitiveness and profitability.

ACE is made up of **Member Organisations** that are the nationally representative professional associations and / or registration bodies in the EU Member States, the Accession Countries and other European countries with a special status in relation to the EU. Through them, the ACE represents the interests of c. 562,000 architects.

ACKNOWLEDGEMENTS

ACE acknowledges all who have contributed to our work during the past year and helped us to realise our objectives, in particular:

2019 Board Members:

President: georg pendl; Vice-President: Philippe Klein;
Treasurer: Fulgencio Aviles Ingles; Area Coordinators: Ruth Schagemann, Dubravko Bacic and Eugen Panescu; Board Members: Paula Huotelin, Pavel Martinek, Jose-Manuel Pedreirinho, Indrek Näkk¹, Ales Vrhovic.

2019 ACE Work Group Chairs:

Olga Mihalikova, Kathryn Meghen, Sybille Bucher/Mikal Fišer, Lars Emil Kragh, Ian Pritchard, Lars Jarle Nore/Peter Hyttel Sørensen, Ursula Faix, Eugen Panescu, Judit Kimpian, Andreas Rumpfhuber.

¹ Deceased 23 June 2019

Design ©Tobenotobe by Filigrane Benoît Toussaint

2020 Board Members:

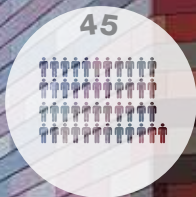
georg pendl (Austria) / President
Fulgencio Aviles Ingles (Spain)
Carl Bäckstrand (Sweden)
Boryslaw Czarakoziew (Poland)
Selma Harrington (Ireland)
Ferenc Makovenyi (Hungary)
Pavel Martinek (Czech Republic)
Eugen Panescu (Romania)
Ruth Schagemann (Germany)
Jacques Timmerman (Belgium)
Diego Zoppi (Italy)



ARCHITECTS' COUNCIL OF EUROPE

2019 ANNUAL REPORT & 2020 OUTLOOK

ACE BY NUMBERS



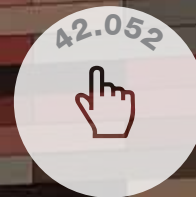
Number of Member Organisations in ACE



followers on Twitter



Facebook followers



website visits
(+ 51,38% cf. 27,779 in 2018)



Number of ACE events web-streamed in 2019 (available on the Website)



views on ACE YouTube Channel
(+ 62% = 283.6 hours)



Number of ACE Expert Work Groups



Percentage of architects under 40 (check Sector Study or delete)



Size of the architectural market (in bn €)



Percentage of practices entering Architectural Design Competitions



CPD, hours per year



Percentage of women in the profession



Number of architects in the EU



Number of EU-funded projects in which ACE is participating



TABLE OF CONTENTS

PRESIDENT'S REPORT	6	COMMUNICATIONS	21
SECRETARY GENERAL'S REPORT	8	STRATEGIC ALLIANCES AND NETWORKS	23
ACCESS TO THE PROFESSION: ADVANCING HIGHEST PROFESSIONAL STANDARDS	10	TREASURER'S REPORT AND FINANCIAL OUT-TURN FOR 2019	25
PRACTICE OF THE PROFESSION: OPTIMISING PROFESSIONAL MOBILITY	12	ACE GOVERNANCE / EXECUTIVE BOARD / SECRETARIAT	26
ACHIEVING QUALITY IN THE BUILT ENVIRONMENT (BAUKULTUR)	14	POLITICAL CONTEXT AND PRIORITIES FOR 2020	28
EU-FUNDED PROJECTS	16	MEMBER ORGANISATIONS	30

WHAT THE ARCHITECTS' COUNCIL OF EUROPE DID FOR YOU IN 2019

ADVOCACY

- **PREPARED** ACE positions for next year's work of the Council expert group on 'High Quality Architecture & Built Environment for Everyone';
- **PUBLISHED** ACE Manifesto for the European Parliament elections;
- **SUBMITTED** ACE position to DG GROW on the future of the Single Market;
- **SUBMITTED** ACE position on the next Creative Europe programme;
- **PREPARED** for the next review of the Professional Qualifications Directive;
- **ISSUED GUIDANCE** to Member Organisations on the Proportionality Directive;
- **CONDUCTED** a survey on the implementation of the Public Procurement Directive and the impact of the Public Procurement Package;
- **PARTICIPATED** in the further development of the Smart Readiness Indicator;
- **TOOK** part in the testing of the EU Level(s) scheme;
- **PUBLISHED** a statement 'Design for a Circular Economy';
- **COMPLETED** a suite of briefing notes on the EU Urban Agenda;
- **JOINED** the Commission's Expert Group on Cultural Heritage.

EVENTS

- **ORGANISED** the *Achieving Quality in the Built Environment* Conference in Innsbruck;
- **ARRANGED** another Energy Day during the EU Sustainable Energy Week;
- **ORGANISED** a Policy Seminar on Quality Architectural Services for a Sustainable Built Environment with MEPs at the European Parliament;
- **HELD** an exhibition of 20 architectural projects that mitigate the worst effects of Climate Change at the European Parliament;
- **ARRANGED** a workshop with DG EAC, during the EU Week of Regions & Cities on the adaptive reuse of the built heritage;
- **ARRANGED** an International Conference on Design Competitions with the UIA at UNESCO Headquarters in Paris;
- **ORGANISED** *Perspectives: the Young Architects' Forum* in Barcelona;
- **RAN** a webinar on 'reality check'- within the BIMplement project.

STUDIES & PUBLICATIONS

- **PUBLISHED** a study on the Value of Good Design and the Role of Architects;
- **CONCLUDED** a study on the impact of regulation on cross-border services;
- **ISSUED** "An Introduction to BIM";
- **PUBLISHED** the 6th edition of the ACE Sector Study;
- **PUBLISHED** an Export Guide;
- **PRODUCED** a checklist for collaboration between architectural firms;
- **PUBLISHED** a study on Assessing the Role of Architecture in Building Performance as Defined by the EU Level(s) Scheme;
- **PUBLISHED** a complementary value study with a focus on teaching architecture students the value of architecture, building performance and best practice examples within TripleA-reno.

WORK GROUPS

- **CONTINUED** to support the ACE Internationalisation task-force;
- **RE-LAUNCHED** the Regulatory Questions & Issues work group;
- **SUPPORTED** the Women in Architecture task-force;
- **HELD** two meetings of the public procurement / architectural design contests work group;
- **CONTINUED** Mutual Recognition negotiations with the architects of South Korea and initiated talks with Japanese architects;
- **WORKED** on 10 EU funded projects (Horizon 2020 and ERASMUS+);
- **RE-LAUNCHED** the ACE Housing Work Group.

DEVELOPMENT

- **UP-DATED** ACE Strategy and Business Plan;
- **DEVELOPED** further bids for Creative Europe network funding support;
- **ENGAGED** a new Communications Officer and two new Research assistants.





PRESIDENT'S REPORT

georg pendl – April 2020

ACE had an active year 2019. At the end of 2018, Architecture gained its rightful place in the Council Work Plan for Culture which includes a Chapter *High-quality architecture and built environment for everyone* highlighting architecture as a discipline that encompasses the right balance between cultural, social, economic, environmental and technical aspects for the common good. The Plan strongly supports the previously published Davos Declaration: "Towards a high-quality Baukultur for Europe" where culture plays a central role in the environment shaped by humans (which includes architecture, heritage, public space and landscape). Innovative and inclusive processes are needed to deliver and preserve quality architecture, to develop an integrated approach contributing to the well-being of all citizens.



OPENING OF THE OPEN AIR EXHIBITION OF THE BARBARA CAPOCCHIN INTERNATIONAL ARCHITECTURE PRIZE 2019 Padova, Italy

With Pino Capocchin, CNAPPC President, Ilaria Becco, National Councillor, Architect Giovanna Osti, President of the Architects' Order and the Prize winners Herma Fasch and Jakob Fuchs.

In this context, ACE organised two conferences with the support from the Creative Europe programme. I was also invited, as a speaker, to several events handling the above mentioned topics. There was a signing ceremony of the Davos Declaration in Madrid with representatives of the federal government, in Split the annual conference of our Member Organisation the Croatian Chamber of Architects, where I had the opportunity to present the latest ACE Sector Study together with Dubravko Bacic. In Milano the Ordine had its conference with the title Re-use. In the context of ACE collaboration with the European Association for Architectural Education (EAAE), I attended the annual assembly of the EAAE, together with Thomas Vonier, to take part in a panel debate. ACE also organised a seminar in the European Parliament with MEPs from Finland and Ireland focusing on sustainable design.

The ACE Spring conference *Achieving Quality in The Built Environment*, in Innsbruck, gathered speakers from all over Europe presenting different tools to assure quality in architecture. Among the results of the conference was the ACE Innsbruck statement prepared by the conference speakers.

ACE Conference presentations had already provided the basis of a statement the year before in Leeuwarden, and also at the end of last year in Barcelona. ACE declarations, based on concise arguments and initiatives, make the result of the conferences more tangible and have been used also to disseminate our ideas and goals to our interlocutors in the European Commission. I also have found quotes of our declarations in different presentations during the year.

In the autumn I was invited to speak at a conference *Getting the Measure of Baukultur* organised by the Confederation Suisse and in the seminar *Architecture for the Common Good* arranged as part of the events of the Finnish Council Presidency.

All these events share a common element: communicating the need for a high quality built environment as a basic fundament for the wellbeing of citizens and, therefore, the common interest.

I was nominated by the European Commission to join an expert group on Cultural Heritage after a successful application by ACE. This group is a follow up to the European Year of Cultural Heritage, and is the first ever expert group in the cultural field. The group consists of representatives of many cultural operators, NGOs as well as representatives from governmental bodies, and is an excellent platform for the exchange of ideas, opinions and best practices.

The working method for *High-quality architecture and built environment for everyone* in the above-mentioned Council Work Plan for Culture is an OMC group (open method of coordination) followed by a conference hosted by Austria and possible Council conclusions.

The OMC group on high quality architecture consists of representatives from Member States, preferably from the ministries in charge of issues related to architecture. I was invited as an expert to join the first meeting in the beginning of 2020.

It is not only of cultural importance that ACE highlights the role of architecture in the context of public interest. If our work has no relevance to society, it has no value to be protected by the society. This is also recognised by the European Court of Justice in the context of the German fee scale (HOAI) ruling. In spite of the ultimately negative result – the HOAI was seen not to be in accordance with the European legislation – it contains several references to the public interest and the quality of the built environment, which create opportunities for the recognition of our work, including from a financial viewpoint.

For me this shows, that our activities in this field of “soft” issues have impact not only on the cultural field itself, but also on the general reception and understanding of the impact and value of our profession. In this report you will find more about the activities by



which ACE is raising the awareness of the value of architecture and architects in many ways.

Mankind is today facing an enormous challenge. This crisis preliminarily concerning our health will be followed by crises in several other fields as well.

Architects are not in the middle of the recent debate but can contribute and deliver solutions in their own field of expertise. When thinking about the reasons for the appearance of new viruses, we face one of the consequences of the behaviour of mankind in demolishing the harmony with nature. Deforestation, wet markets, the transfer of livestock and food across the whole world, and the general exploitation of nature are the basic reasons for this.

And there, as well, architects are asked to think about their work. The prospective future doesn't lie in more, bigger, greater, more universal and more global. It lies in a rethinking of planning and building, back to basic needs and ways to resolve them. And only if we, as architects, also focus on the harmony of our work and living with nature, shall we be able to contribute to a prosperous future.

I wish to thank all ACE Member Organisations and Delegates for the support and resources you have given to ACE in 2019. I hope that you and your loved ones stay safe and well.



ACE-UIA INTERNATIONAL CONFERENCE ON DESIGN COMPETITIONS UNESCO HEADQUARTERS Paris, France

Signature of the conference statement by georg pendl, ACE President & Thomas Vonier, UIA President. Photo: Fabrice Gentile



SECRETARY GENERAL'S REPORT

Ian Pritchard

CREATIVE EUROPE AND "CONNECT-ARCH" PROGRAMME

Creative Europe is the European Commission's framework support programme designed to help the cultural and creative sectors seize the opportunities of the digital age and globalisation; to enable sectors to reach their economic potential, contributing to sustainable growth, jobs, and social cohesion; and to give Europe's culture and media sectors access to new international opportunities, markets, and audiences.

ACE is in the third year of its four-year "Connect-Arch" programme which aims to assist the sector towards recovery and help architects to react to current challenges notably: intra-EU mobility, increased extra-EU competition, and up-skilling to adapt to digital and other new technologies. To reinforce the sector's capacity, ACE is pursuing the following global objectives:

Organisational Development – to strengthen the ACE network and increase collaboration among its Member Organisations (MOs)

- build organisational capacity through knowledge-sharing and peer-to-peer learning activities;
- enhance MOs' engagement and that of their Members through workshops / conferences;
- develop mutually beneficial schemes between MOs;
- build MOs' capacity and leverage their positions at national / EU level through collective actions; provide opportunities for ACE MOs to participate in EU policy/law-making.

Improving the trans-national mobility of European architects – to help them access new markets

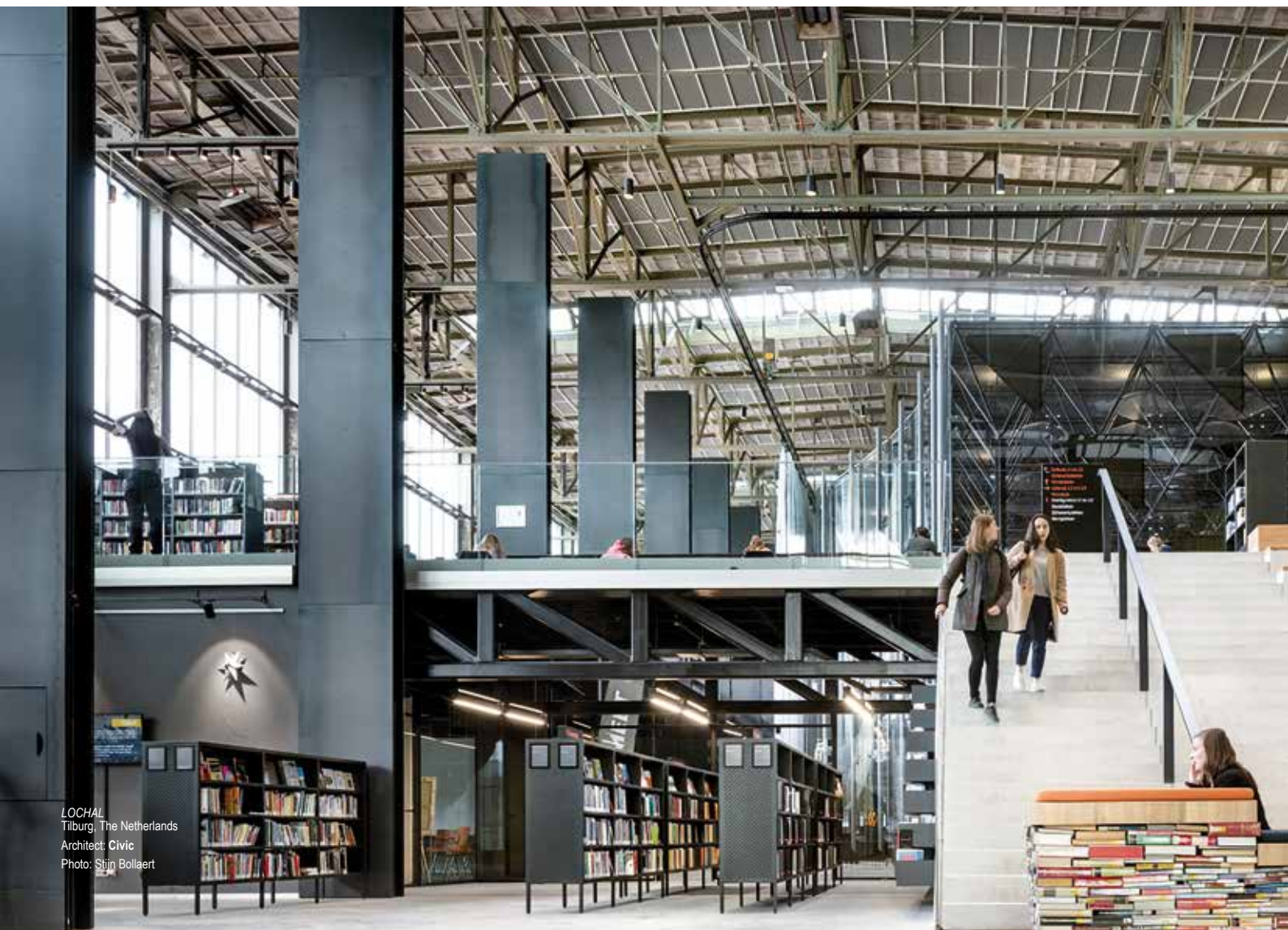
- identify opportunities and partnerships in the EU and beyond;
- negotiate Mutual Recognition Agreements with architects outside the EU.

Professional Capacity Building – to enable EU architects to build up their professional and business skills

- help EU architects advance their positions as leaders in the face of global challenges;
- support firms to maintain skills / acquire new ones, to remain globally competitive;
- improve the entrepreneurial skills of architects and their ability to flourish in new markets.

Collecting contextual data on the architectural profession

- provide comparative, quantitative and qualitative data and surveys on sector developments.



In 2019, ACE organised two web-streamed events (Innsbruck Conference *Achieving Quality in The Built Environment* and *Perspectives: the Young Architects' Forum* in Barcelona) as well as two other events: an Energy Day during the EU Sustainable Energy Week and an *International Conference on Design Competitions* organised jointly with the International Union of Architects, at UNESCO, Paris.

In furtherance of our internationalisation agenda, we pursued mutual recognition negotiations with South Korea and Japan, while consolidating the earlier agreement with Canada. We also maintained our Internationalisation & new business models task-force, which produced an Export Guide, a joint venture checklist for cross-border collaborations between practices and started work on a checklist for architect-client relations.

We initiated a second phase of our Study on the Value of Good Design and the Role of Architects and started to create a searchable, online repository for information contained in the various editions of the ACE Sector Study,

Last, but not least, we created an exhibition to illustrate the solutions that architecture can bring to the challenges posed by climate change. The private view took place at the European Parliament in conjunction with a seminar for MEPs. The later exhibition was shown at the Tour et Taxis building in Brussels and will be available to tour Member Organisations in 2020.

In 2020, we plan to organise a Conference, in Brussels, on *Climate Change & Built Environment*. We will respond to approaches for mutual recognition talks with Mexico and Australia, finalise the architect-client checklist and publish a brochure on new business models. We will produce the 2020 edition of the Sector Study, develop a third phase of our Value study, initiate a study on Quality and arrange for our Climate



Change exhibition to be shown in up to four EU Member States.

NEXT CREATIVE EUROPE PROGRAMME

At the time of writing, budgets had not yet been approved for the 2021 – 2017 period. DG EAC is looking to achieve a closer alignment between policy (new European Agenda for Culture, Council Work Plan for Culture) and the Creative Europe programme.

The New Agenda for Culture has three main objectives: - Social (the power of culture for social cohesion and well-being); Economic (culture-based creativity (education & innovation) and its impact on Jobs & Growth); and External – international cultural relations.

The Creative Europe programme for 2021 – 2027 is likely to focus on competitiveness; cultural diversity; fragmentation of markets; concentration of the market and increased competition; digitalisation; and access to funding. ACE recommended that the next programme support actions to achieve the ambitions set out in the Davos Declaration and to promote high quality architecture and Baukultur in Europe.

It is expected that DG EAC will continue to support networks (such as ACE) with similar aims (upskilling, promoting mobility, internationalisation of careers) and following successful sectorial approaches in other sectors, DG EAC envisages a number of **structured dialogues with other sectors – including architecture.**

ACE MANIFESTO FOR THE EUROPEAN PARLIAMENT ELECTIONS

To coincide with the 2019 European Parliament elections, ACE published a Manifesto - "Achieving Sustainability in the Built Environment" - focusing on Achieving High Quality Architecture & Baukultur, Securing Affordable Housing of High Quality and Re-thinking the connection between Climate Change and the Built Environment - supported by appropriate upskilling and high quality education through the Professional Qualifications Directive.

The Manifesto was distributed to Member Organisations for use in regional debates with election candidates. ACE also uses it as a calling card for meetings with new Members of the European Parliament and organised an event at the Parliament in the autumn of 2019 to sensitise MEPs to ACE's main preoccupations.

MEMBER STATES

While the main focus of our activity is clearly in Brussels, we also achieved visibility in a number of Member States, with meetings hosted by Member Organisations in Austria, Finland, France, Germany, Greece, Hungary, Ireland, Malta, Poland, Spain and the UK.





ACCESS TO THE PROFESSION

advancing highest professional standards

Coordinator: Ruth Schagemann

PROFESSIONAL QUALIFICATIONS DIRECTIVE

Olga Mihalikova

Mixed Qualifications

The PQD-PPE-CPD work group has addressed the issue of the legislative interpretation of "mixed qualifications" by the Competent Authorities and the European Commission. Just before the ACE / ENACA meeting in Malta in October, WG has received a proposal for a new "Guide on Recognition of Qualifications" from the EC through the national coordinators (71 questions and answers). Unfortunately, we were not asked by the EC to comment on this document, nor did we have any knowledge of its preparation. However, based on question 45, and with respect to the example presented in this Guide, we have an indirect but clearly defined EC position on the issue (i.e. only holders of the full qualifications acquired in one country i.e. listed qualifications plus access to market requirements) are eligible for automatic recognition.

Following on from 2020, we will seek concrete agreement and support for a potential solution, in order to maintain the mobility of as many young architects as possible. Already in 2019 we identified two possible solutions. However, any political position we might propose should be supported by the competent authorities, without which we would only make a declaration in favour of young professional without any a real positive impact.

Automatic Recognition

In October, in cooperation with the competent authorities, and in particular the RIAI, it was possible to draft a universal version for the accompanying certificate for the Automatic Recognition process. This solution seems to be very well accepted by the Competent Authorities, which provides a great basis for the creation of a "European Certificate". Such unified wording would, in the future, increase the transparency of the system of recognition and constitute good practice. It would also assist the process of negotiating further mutual recognition agreements.

We will continue preparing and promoting the use of the new certificate in 2020.

Continuous Professional Development (CPD) & Professional Practical Experience (PPE)

The continuous education of architects is one of the conditions directly required by the PQD. Maintaining professional competence is an important argument in favour of regulating the profession and consumer protection and we know that, in most countries, it exists in some form. On the other hand, the number of MOs registered in the ACE CPD system does not reflect this. The 2020 objective is

a better understanding of national requirements and CPD systems. The information obtained and its analysis will then be made available to the ACE Executive Board to provide an opinion and, if necessary, define a strategy.

Brexit

Following the success of the Conservative party in the UK General Election, the House of Commons voted in favour of the "Withdrawal Agreement" before Christmas. At the time of writing the House of Lords was expected to consider the plan and, once ratified by the U.K. Parliament, the European Parliament would then vote on the deal. The process is expected to pass smoothly and the exit date of 31 January 2020 was expected to be respected.

Attention will then turn to the transition phase, which keeps the UK trading with the EU on its existing terms until the end of December 2020. During transition, the next phase of negotiations will begin to determine what kind of post-Brexit relationship the UK and the EU might enjoy.

While Professional Services may not be as high up the agenda as other issues such as aviation, defence, security, fisheries etc. - or even trade in goods - ACE will need to consider the future relationship between EU27 and the UK from 2021 onwards as far mutual recognition of qualifications is concerned. Of course, if no trade deal is reached during this transition phase, the UK would leave the EU with no deal and would trade with the EU on WTO terms.

Public Procurement should not be affected as the UK has applied, to sign the international GPA (Government Procurement Agreement) in its own right (the EU is a current signatory on behalf of EU28), so UK / EU professionals will be able to respond to calls to tender in both jurisdictions.

REGULATORY QUESTIONS & ISSUES

Kathryn Meghen

The RQI group was re-formed under new chairmanship in order to keep under review

- regulatory issues relating to the Single Market (IMCO reports; Copenhagen Economics report);
- the de-regulatory impact of Reform Recommendations on Professional Regulation and the Spring / Winter packages of the European Semester;
- exploit the findings of the so-called Cologne Studies commissioned by ACE;
- monitor the impact of the Legislative Package on Services and in particular, the Proportionality Test Directive.

Proportionality Test Directive

Following the adoption of the Proportionality Test Directive, ACE developed a Briefing Note for Member Organisations describing the concept of proportionality under EU law, the ambition of the Directive and its impact on MOs. ACE also outlined its concerns about costs, administrative burden and the prospect of regulatory freeze. MOs were asked to monitor the situation, notify ACE of developments and guard against gold-plating.

European Semester – Single Market Performance Report

A Single Market Performance Report was included in the European Semester Autumn Package for the first time, to highlight the importance of implementing reforms that facilitate the smooth functioning of the Single Market. Once again, Architecture is used as an example of a "highly regulated sector" – and it is claimed that such regulation is detrimental to cross-border trade, productivity, employment and value-added.

In spite of the unconvincing report on the impact of regulation on service quality – which resulted in the EU admitting that the findings



KINDERGARTEN
Paris, France

Architect: Axelle Acchiardo,
Linda Gilardone, Architectes associées
LA Architectures et Corentin Desmichelle
Atelier Desmichelle Architecture

Photo: Charly Broyez

could not be used as the basis for policy-making – the Commission now claims, in the Single Market report, that excessive restrictions in professional services stifle competition and limit market entry. It goes on to claim that stricter entry/conduct requirements are not necessarily associated with higher service quality and less restrictive access conditions are not necessarily associated with lower quality standards of services.

The report concludes that the elimination of obstacles in highly regulated services would have a positive impact on the sector's value-added and employment. These claims appear to be based on various studies commissioned, in 2019, for the IMCO Committee (e.g. Pelkmans' study, the Copenhagen Economics study and the Rostam-Afschar study on the Impact of Regulation on Service Quality). One of the first tasks of the RQI group in 2020 will be to refute the spurious claims made in these reports.



PRACTICE OF THE PROFESSION & TRADE IN SERVICES

Coordinator: Dubravko Bacic

PUBLIC PROCUREMENT / ARCHITECTURAL DESIGN CONTESTS

S Bucher / M Fišer

Two fruitful meetings were held (in Brussels and Paris) with an increasing number of people interested in discussing topics which are crucial for the architectural profession, the quality of the environment and therefore, the quality of people's lives. Our new French member Benoit Gunsley has agreed to put his legal background at our disposal.

IMCO studies – three comprehensive studies were published, giving an overview of the current EU public procurement market. They reveal the weakness and subordination of a quality orientated profession like architecture. Despite architects' human objectives, we are a minority with little power. A procurement study focusing exclusively on intellectual services would be helpful.

Market access for SMEs - the current definition of SME is far removed from the typical architect's practice and the percentage of firms excluded due to routine requirements (turnover, experience etc..) will not change because firms are unlikely to grow significantly bigger. The definition of SME has to change (decrease) or a new "flyweight" category should be established, with appropriate rules for market entry.

Digitalisation - are the various electronic tools as efficient as expected? Are they generally helpful to SMEs and to architects? Is any simplification possible?

Design & Build - a hot issue predicted to grow in importance in the future. We are aware of both good and bad experiences. Although the topic has been intensively discussed, is it relevant for our work group?

Questionnaire on the implementation of the Public Procurement Directive and reactions to the Public Procurement Package this was a great achievement. Its broad content has set a practical format for the work of our group, and gives us some priorities for next year.

Architectural Design Competitions – a core issue of our work group. How to bring up an easy, user-friendly and comprehensive picture of the EU "adc industry"? How to clearly present its complex nature, benefits, power? We should continue to collect best practice examples either electronically or in printed version and then set the objectives, goals to be achieved and the rules, in order to encourage and motivate members to provide the best possible examples to optimise the output which will not only help promote ADC's externally but also to strengthen understanding of the issue within the work group and the Member Organisations.

Revision of Public Procurement Directive - although this will not occur for some years, it is never too soon to begin. Our Bulgarian member already provided an extensive contribution which will serve as a basis for starting the process.



TRADE IN SERVICES

Ian Pritchard

MRA with CALA

Following the signature of the ACE – CALA Mutual Recognition Agreement (MRA) in Montreal, Canada, at the end of 2018, the draft agreement was notified to the MRA Committee for which provision has been made in the Comprehensive Economic Agreement (CETA). A video-conference took place involving the Trade Global Affairs Canada (Canadian Trade Ministry), CALA, DG TRADE, DG GROW and ACE – to clarify the meaning of some of the terminology. DG TRADE is currently re-drafting some of the text to ensure compliance with the terms of the CETA. We hope this will be finalised during the course of next year in order to make the MRA fully operational.

South Korea and Japan

The President and Secretary General visited Seoul and Tokyo to resume negotiations with the Korean Institute of Registered Architects (KIRA) and initiate talks with the Japan Institute of Architects (JIA).

The meetings allowed the parties to give detailed presentations of their respective regulatory environments. The Seoul visit was timed to coincide with the annual cultural exchange between the EU and South Korea (for which provision is made in the EU-South Korea Free Trade Agreement) and the SG made a presentation of ACE's activities.

For next year, DG EAC has suggested that we consider timing a visit to Mexico (to revive earlier talks with the Federacion de Colegios de Arquitectos de la Republica Mexicana – FCARM -) to coincide with the annual EU-Mexico cultural exchange (for which provision is made in the EU-Mexico Free Trade Agreement).

Last, following approaches made by the Australian Representation to EU, we have been invited to consider whether there would be interest in developing a Mutual Recognition Agreement between the architects of the EU and Australia – New Zealand.

INTERNATIONALISATION & NEW BUSINESS MODELS

Lars Emil Kragh

Export Guide

Following earlier work to create an international section on the ACE website, and the publication of two brochures containing key messages to promote EU architects, the group produced a Guide to Working Internationally. This covers various aspects related to working across borders – initiating the project? why export? are you ready to export? Researching international markets; planning and market entry; finance and other useful information.

Checklist for architect-architect collaborations (joint ventures)

Towards the end of the year, the group produced a checklist that sets down some basic principles for architect-architect collaboration, to be used when working internationally

For the coming period, the group will focus on developing a checklist of key principles and guidelines for architect – client collaborations – and will also focus on New Business Models in order to determine how we might help architects to describe or define a business model that makes it easier to make a decent income. It might end in an online course, a handbook or a tool-box. This work could also cover areas of data collection and analysis that could be helpful for future interactions with the European Commission.

BUILDING INFORMATION MODELLING

Lars Jarle Nore / Peter Hyttel Sørensen

Publication of a Guide to BIM – in the Spring of 2019, ACE published a short guide to Building Information Modelling in an attempt to align the concept of BIM to the established architects' praxis and the scope of service in general. The purpose of the guide is to provide some answers to how to deal with the challenge of the rapid digitisation of the construction industry. It is about what we can do, now, to bring value to architects, projects, partners and clients working in a fast-evolving, digital environment; how architects can improve their IT capabilities and expand their traditionally visual, geometry-based form of communication to include alphanumeric data associated with BIM models and data objects / building parts.

The handbook aims to give advice on how to deal with the challenges that emerge when a project is to be designed using BIM and provide an example of what can be considered as establish practice when working with 3D software.

ACE continues to be represented at CEN Technical Committee 442 (TC/442) which is developing a European standard for BIM.

WOMEN IN ARCHITECTURE

Ursula Faix

The task-force has

- collected reports from various EU Member States;
- held a workshop on “why women leave architecture; why they stay”;
- received presentations on the Inclusion (BNA) and Equality Diversity and Inclusion (RIBA);
- defined the parameters for developing a EDI stamp / pledge;
- considered the development of a toolkit for dissemination.

However, in the light of comprehensive research and strategies developed elsewhere over the past 5 years, the group wishes to shift the focus to implementation in practical terms – how to raise awareness e.g. with leaflets, testimonials on YouTube or Facebook. Judicious adjustments could also be made to the ACE Deontological Code. A set of recommendations is being prepared for the Spring of 2020.





ACHIEVING QUALITY IN THE BUILT ENVIRONMENT (Baukultur)

Coordinator: Eugen Panescu

ENVIRONMENT & SUSTAINABLE ARCHITECTURE WORK GROUP *Judit Kimpian*

Level(s) Study

Level(s) is a voluntary framework of indicators, developed by the EU Commission, for reporting on the environmental performance of buildings along their life cycle. It consists of a set of indicators with six macro-objectives dealing with lifecycle emissions; resource efficiency; water use; health and comfort; resilience and adaptation; and cost and value. ACE is represented in the Steering Committee of the Commission that supports the development of this new tool.

In April 2019, ACE published a study, co-funded by Creative Europe, entitled *Assessing the Role of Architecture in Building Performance as Defined by the EU Level(s) Scheme*. The study aims to contribute to the testing phase of Level(s) by mapping out the barriers encountered by architects in obtaining data to carry out a Level(s) assessment and in interpreting them correctly as part of the architectural design process.

The study offers a detailed analysis of the reporting metrics and examines how Level(s) could help to improve sustainable architectural quality. It also includes recommendations for improvement and for a greater uptake of the scheme by building professionals.

ACE welcomes Level(s) as an important EU initiative to stimulate a more 'value-creating' and 'resource-optimised' built environment from a life cycle perspective, which is fundamental in the EU's shift towards a green, circular economy. The study can be downloaded from the ACE website (Policy Positions section).

Smart Readiness Indicator

In application of Article 8 of the revised Energy Performance of Buildings Directive (EPBD), the EU Commission is developing a Smart Readiness Indicator (SRI), meant as an optional EU scheme to "measure the capacity of buildings to use information and communication technologies and electronic systems to adapt the operation of buildings to the needs of the occupants and the grid and to improve the energy efficiency and overall performance of buildings". ACE is a member of a stakeholder group set up by the Commission to support the development of this new tool.

If smartness is often regarded as a panacea for achieving better indoor environmental quality at nearly zero energy use, in practice, this often happens to the detriment of investment in simple passive architectural measures. Higher-than-expected energy consumption in buildings is often attributed to the growing complexity of technical systems. Better regulation is needed to ensure that the construction

sector plans adequately to eliminate the risks associated with automation and complexity in building systems. ACE recommends that the SRI fully recognises the risks, as well as the benefits of increased automation in buildings.

Designing for a Circular Economy

On the occasion of the World Circular Economy Forum (WCEF), on 4-5 June 2019 in Helsinki, ACE published a Statement highlighting the importance of architecture in achieving more circularity in the construction sector.

Like many other sectors, construction operates largely within a linear economy model, assuming that resources are abundant and that we can dispose of them without consequences. Yet, there is growing awareness of the urgent need to develop more sustainable and regenerative economic models. Developing circular economy principles in the built environment is fundamentally about changing the way we design our buildings to ensure that they can be operated, maintained, repaired, re-used or adapted to new needs, while optimising resource value and generating as little waste as possible.

The Statement presents different architectural solutions promoting circularity, focusing on preserving and enhancing the value of resources. It also puts forward some policy recommendations to support the architectural approach to circularity. The Statement is available on the ACE website (Policies section).

EU Sustainable Energy Week (EUSEW)

In June, during the EU Sustainable Energy Week (EUSEW), ACE organised an Energy Day consisting of three workshops. The first one put the focus on integrated tools and methods for deep retrofitting developed by five EU-funded projects (TripleA-reno, iBROAD, HAPPEN, ALDREN, Fit-to-NZEB). The second one aimed to present and discuss the findings of the the ACE Study on Level(s). The last session brought together experiences from four Horizon 2020 projects (BIMplement, BIMCert, BIMMeet, Net-UBIEP) working with BIM as a training tool and developing qualification frameworks. Speakers presentations and video recordings of the three sessions are available on the ACE website (Activities > Events section).

In 2020, the ESA Work Group will continue to contribute to the development and testing of the Level(s) scheme and Smart Readiness Indicator. It will also closely follow up and react to policy and legislative developments regarding the EU Green Deal, in particular the Commission's proposal on a European 'Climate Law'; the new EU Strategy on Adaptation to Climate Change; the 'Renovation wave' initiative for the building sector; and the Circular Economy Action Plan.

URBAN ISSUES AND HOUSING WORK GROUP

Eugen Panescu

Urban Agenda for the EU

The Urban Agenda for the EU, launched in May 2016 with the Pact of Amsterdam, is intended to be a new working method to promote cooperation between Member States, cities, the EU Commission and stakeholders. 12 thematic Partnerships have been set up and delivered Action Plans containing non-binding recommendations for: 1) Better and more urban-friendly regulation; 2) Better funding; 3) Better knowledge sharing. In 2019, ACE developed a set of briefing notes, for its Member Organisations, summarising key elements of the Action Plans developed by the 12 Partnerships.

In 2020, the Work Group will continue to follow up the implementation of the Partnerships' Action Plans. It will take part in the CITIES FORUM organised by the EU Commission in Porto, the purpose of which is to reflect on the future directions of urban development within Cohesion Policy and the future of the Urban Agenda for the EU. The Work Group will start developing a booklet which will focus



on the relationships between different fields that are commonly addressed in isolation: architectural solutions to climate change, building performance, heritage, housing and town planning. It will also seek to further develop its collaboration with the European Council of Spatial Planners (ECTP-CEU).

HOUSING WORK GROUP

ACE Member Organisations have identified Housing as a priority work area. In December 2019, a new Housing Work Group met for the first time. In 2020, the Work Group will collect best practice examples and policy recommendations developed by the ACE member organisations in the area of housing. Based on these inputs, it will develop policy recommendations that can be advocated at EU level and promote innovative architectural solutions to housing issues.

HERITAGE

Workshop on the Adaptive Re-use of the Built Heritage for a Greener Europe

In October 2019, ACE organised a workshop, at the European Week of Regions and Cities, on the Adaptive Re-use of our Built Environment for a Greener Europe, in collaboration with the Federal Chamber of German Architects (BAK) and DG Education & Culture. The workshop discussed the advantages, challenges and barriers inherent to adaptive reuse projects, as well as the Leeuwarden Declaration initiated by ACE in 2018 during the European Year of Cultural Heritage.

The preliminary findings of a Handbook on the Sustainable & Circular Reuse of Spaces and Buildings, developed by two Partnerships of the EU Urban Agenda were presented, as well as the Horizon 2020 CLIC project, which seeks to apply the circular economy principles to cultural heritage.

Speakers demonstrated that the adaptive reuse of our built heritage can help to build a greener Europe by regenerating and enhancing the economic, social, environmental and cultural values of our built heritage. However, it shall not be a one-size-fits-all solution applied in all circumstances. Smart interventions on heritage require a careful assessment of the place, issues and interests at stake and the surrounding urban fabric.

Peer-learning scheme on Cultural Heritage for Cities and Regions

In 2019, ACE joined a consortium made up of Eurocities, KEA European Affairs, ERRIN (European Regions Research and Innovation Network) and Europa Nostra which successfully responded to a call for tender of the EU Commission for the development of a peer-learning scheme on cultural heritage for cities and regions. The project will start in February 2020.

The project will develop a peer-learning scheme for cities and regions on three topics related to cultural heritage policies: 1) participatory governance of cultural heritage, 2) adaptive reuse of built heritage and 3) quality of interventions on cultural heritage. The consortium will compile a catalogue of c. 30 good practices from EU cities and regions on these topics. Furthermore, based on this selection, at least 12 peer-learning visits will be organised to selected EU cities and regions, bringing 20+ participants per visit (urban, rural and regional policy-makers as well as individual experts/ professionals).

CLIMATE CHANGE

Policy Seminar & Exhibition in the European Parliament

In October 2019, ACE organised a seminar in the European Parliament that brought together Members of the European Parliament, representatives from the EU Commission, architects and other stakeholders of the sector to discuss solutions that architecture can offer for a sustainable, high-quality built environment. The session provided the opportunity to better understand the regulatory framework in which European architects operate and the challenges and opportunities raised by EU policies and initiatives, in particular regarding energy performance of buildings, circular economy, climate change, the Level(s) scheme.

The seminar was followed by the opening of the exhibition “20 Architectural Projects Against Climate Change”, co-funded by the Creative Europe programme, which featured 20 projects that contribute to mitigate climate change or adapt our built environment to its worst effects. Both events were organised with the kind support of Mr Rainer WIELAND, Vice-President of the European Parliament.

Speakers presentations and the booklet of the exhibition are available on the ACE website.



EU-FUNDED PROJECTS

Veronika Schröpfer

The way we design and build building is changing rapidly due to the digitalisation of the industry and the urge to mitigate and adapt the built environment to climate change. A few years ago, we spoke about energy efficient buildings, then moved to nearly Zero Energy Buildings and now the ACE is already working on Energy Plus Buildings. With the release of the Green Deal it is now more evident than ever to also focus on circular construction and on further accelerating the renovation of the EU building stock in time to meet 2030 targets. By being involved in EU-funded projects the Architects' Council of Europe is promoting the architects' role in these developments, influencing cutting edge research and make it more applicable for European architects. We harvest the knowledge to underpin our policy positions and spread it amongst our member organisations and their members by offering training and awareness raising events.

ABRACADABRA

(March 2016- February 2020)

www.abracadabra-project.eu



Urban densification pays for renovation.

This three-year project focused on generating a substantial increase in the real estate value of buildings through significant energy and architectural transformation with new volume additions aiming at achieving nZEB. Although it concluded in February, the results will be used in 2020 to fight against climate change.

BIMplement

(September 2017 - February 2020)

www.bimplement-project.eu



Training on air tightness and ventilation.

The overall aim is to achieve an improved quality for nZEB construction and renovation by Continuous Professional Development training and BIM-enhanced qualification schemes. These address the entire value chain in a cross-trades and cross-level multidisciplinary approach, strengthened with hands-on and BIM enhanced workplace learning tools. The project has two main areas of focus: air tightness and ventilation; and five participating countries: France, Lithuania, the Netherlands, Poland and Spain.

The ACE has organised an Energy Day in June 2019 on upskilling the AEC industry to deliver high-quality, energy efficient retrofitted buildings with BIM learning tools. In December we run a webinar on a 'Reality check on BIM'. In 2020 we will host another webinar on the results of the project, before it will finish in the summer.

RenoZEB

(October 2017 - March 2021)

www.renozeb.eu



Plug and play facades for deep nZEB renovation.

RenoZEB develops cost-effective 'plug and play' solutions for large-scale deep nZEB renovation. The real (Estonia, Spain) and virtual (Bulgaria, Greece, Italy) demonstration cases will show and ensure the replicability of the approach to different building types and climates. The technical tools will monitor the buildings before and after the nZEB renovation.

During the EUSEW 2019, ACE co-organised a policy session on 'scaling-up deep energy retrofit markets towards 2030 targets' in June in Brussels. Dr. Veronika Schröpfer was invited as a speaker. For the first time, architects can download for free scientific publications on e.g. comfortable indoor environment, architectural façades, workflow improvements, directly through the project website. In 2020 ACE will set out with a RenoZEB training day.

TripleA-reno
(May 2019 - April 2021)
www.triplea-reno.eu



Focus on the building user.

TripleA-reno seeks to change the paradigm that buildings use energy, as in fact people use energy for their comfort at home and work. The project will provide gamified support tools, which help occupants to make informed and economically wise decisions regarding the renovations of their homes. The benefits of the proposed solutions are tested and demonstrated in real buildings (Greece, Hungary, Italy, Netherlands, Romania, Slovenia, Spain) whereas the results are rolled-out on a wider EU scale through the TripleA-reno Road Show.

In 2019 the «TripleA-reno Road Show » started with awareness raising events at CLIMA 2019 in Bucharest, and at the Social Housing Festival in June in Lyon. ACE also organised an Energy Day on 'Voluntary certification schemes and other integrated approaches in support of deep renovation of buildings' during the EUSEW in Brussels. A complementary value study was conducted focusing on teaching the value of their work to architecture students, related results of EU projects and best practice examples. This will be presented at PLEA 2020 in Spain.

BIMSpeed
(November 2019 - October 2022)
www.bim-speed.eu



Speeding up the renovation.

BIM-SPEED is about accelerating the building renovation using Building Information Model (BIM), which will be the catalyst for a smarter, more efficient method of deep renovation for the residential building sector. BIM-SPEED aims to enable all stakeholders to adopt BIM. The interoperability of a full range of BIM tools for renovation will be accommodated on the innovative BIM cloud platform KROQI. Throughout the 4-years, BIM-SPEED will demonstrate the holistic solution in 13 real demonstration cases in eight different countries (Bulgaria, France, Germany, Italy, Netherlands, Poland, Romania, Spain).

In 2019 ACE was proud to have several Architectural Practices involved in the BIM-Speed Community of Practice and participating on our annual 'Industry Day' webinar. In 2020 ACE will jointly organise an EU-wide BIM Competition with other EU umbrella organisations in all relevant disciplines (architects, HVAC engineers and construction firms).



BIMzeED
(November 2019 - October 2021)
www.bimzeed.eu



Updating architectural education.

A three-year Erasmus+ project on BIM in higher and vocational education. This project supports the construction industry, through education and training to up-skill in the area of technical innovation and digitalisation. BIMzeED develops and pilots 12-16 Learning Units as Open Educational Resources (OERs), and train and upskill 120 educators at European Higher Education Institutions (HEIs) and Vocational Education and Trainings (VETs).

In 2019 the skill requirements were assessed for Croatia, Hungary, Ireland and Spain. We are looking forward to seeing the first learning units in 2020.

ICARO
(December 2018 - December 2020)
www.icaroproject.eu



Who is the construction site technician?

ICARO works on the redefinition of profiles and training of construction site technicians. ICARO assumes a crucial role in relation to the revitalisation of the construction industry, which needs a generational replacement, orientating young and unemployed towards qualified professions. As a result, the project will generate a beneficial impact on employability of young people reducing unemployment at EU level, promoting actions that facilitate a quality training that is attractive and relevant to the employment market. The impact of the project will be particularly relevant in the 3 countries taking part in the project: Lithuania, Spain and Italy.

In 2019 the skill requirements were assessed for Italy, Lithuania and Spain. By the end of 2020 this project will finish with an event hosted by ACE.

BIM4EEB

(January 2019 - June 2022)

www.bim4eeb-project.eu



Interoperable BIM tools.

BIM4EEB is developing an innovative common BIM management system with linked data and a set of five tools:

1. Digital tools for fast mapping of buildings,
2. BIM-assisted Energy refurbishment assessment tool
3. Human Machine interface tool
4. Tool for connecting BIM models and BACS
5. Fast tracking tool for renovation operations

Overall, BIM4EEB targets the reduction of least 20% of renovation time, 15% the average renovation cost, 10% of net primary energy use for a typical residential apartment and a reduction from 3 to 1.5 working days required for a deep energy audit.

In 2019 BIM4EEB has identified the BIM requirements of different sectors throughout the design and construction process. In 2020 we are looking forward to seeing the Building Management System (BMS) connecting all five tools working in a demo version.

DigiPLACE

(September 2019 - February 2021)

www.digiplaceproject.eu



A European digital platform for construction

DigiPLACE is conducting a feasibility study for the development of a European Industrial Digital Construction Platform in order to modernise the European construction industry and ensure its global competitiveness in the 21st century. The project is developing the framework for a platform, which is to be developed in a future EU tender. In order to pave the way for a strong digital network environment, DigiPLACE engages with a large stakeholder community, of which ACE represents the architects' point of view.

In 2019 the project team set out by identifying existing digital platforms inside and outside the construction sector in order to produce a comparative analysis of the state-of-the-art. Mr Peter Hyttel Sørensen the chair of the ACE BIM WG has been elected as a member of the Advisory Board.

In 2020 DigiPLACE will provide an impact analysis of digital technologies in the construction industry and other sectors for identification of possible points of knowledge transfer.

THE BLOX PROJECT, DANISH ARCHITECTURE CENTER (DAC)

Architect: OMA

Photo: Maurizio Tami



Cultural-E
(October 2019 - September 2024)
www.cultural-e.eu



Plus Energy Buildings.

Cultural-E goes a step beyond Nearly Zero Energy Buildings (nZEBs) towards the future of Plus Energy Buildings (PEB). The team is approaching this topic by looking at climate and cultural differences in the use of residential buildings around Europe. By the end of the five years the project will have built four new Plus Energy Houses in France, Germany, Italy and Norway. Cultural-E will also produce design tools, smart technologies, methodologies and policy recommendations for Plus Energy Buildings.

The affordable solutions will guarantee a plus energy balance, a deep reduction in GHG emissions, healthy and comfortable indoor environments, provided by climate-resilient technologies. The team will also look at co-benefits, such as health and community impact.

In 2020 architects and designers will be provided with an easy to understand and informative data visualisation tool for energy simulations, in order to support the design of the demonstration buildings.

DRIVE 0
(October 2019 - September 2023)
www.drive0.eu



Circular building renovation.

DRIVE 0 aims to contribute to the decarbonisation of the European building stock by developing a consumer-centred circular building renovation process in order to make deep building renovation more attractive for consumers and investors, environmentally friendly and cost effective.

The project will provide solutions not only for renewable technologies, but also for recycling and reusing locally available resources and building materials from the existing building stock. The solutions will be tested and validated in seven demonstration cases in Estonia, Greece, Ireland, Italy, Netherlands, Slovenia, Spain.

In October 2019, the project kicked-off with a symposium on circular construction near Maastricht, NL. The highlight of the year was that the project was invited to speak at COP25 in Madrid. In 2020 the bases of the 'EU Circular Renovation Atlas' will be developed.





Urheilupuisto Idrottsparken

URHEILUPUISTO METRO STATION
Helsinki, Finland
Architect: Arkkitehtitoimisto HKP Oy
Photo: Maurizio Tami



COMMUNICATIONS

Julie Deutschmann

WEBSITE

By providing regularly updated content, relevant tools and live streamed events, the ACE website is becoming a point of reference. In 2019, the ACE website was visited by 42,052 people in comparison with 27,779 in 2018 (+ 51,38 %). 50.8 % of our audience is male and 44.53% of our users are aged between 25-34 years.

The most visited webpages are the ACE homepage with the latest news (#1), Access to the profession / How to become an architect (#2), Practice of the profession / Architectural Design Contests (#3), and EU Architecture Policy (#4).

SOCIAL MEDIA

Our Facebook community is growing with 5,889 followers in 2019 vs 4,413 in 2018 (+33,44%). The most relevant contents are the posts with the key figures about the profession (circa 6k of engagement) and related events.

On Twitter, the ACE follower audience size grew from 1,200 in 2018 to 1,572 in 2019. For our events and conferences, this channel is key. In November 2019 we gained 74 followers in one month and reached 36.8K Tweet impressions.

On LinkedIn, we have 1,410 followers vs 950 in 2018.

This year the ACE YouTube channel counted 3.4K views (up by 62% views during the previous period and 293,6 hours watched).

WEB-STREAMING

In 2019, ACE organized 3 live-streamed events. Web-streaming provides an international dimension for our events and a free means for young architects to attend. For 'Perspectives: the Young Architects' Forum' in Barcelona, there were 170 online viewers.

PUBLICATIONS

This year, we published a study on the Value of Good Design and the Role of Architects, the 6th edition of the ACE Sector Study; an Export Guide; a checklist for collaboration between architectural firms and a study on Assessing the Role of Architecture in Building Performance as Defined by the EU Level(s) Scheme.

INTERVIEWS

In 2019 we conducted 3 interviews with internationally renowned architects (Dominique Perrault, Eva Jiricna and Friedrich Passler) in order to bring valuable content, generate traffic and promote our conferences and main topics.

NEWSLETTERS

This year we sent out 6 ACE INFO, the ACE newsletter is an emailing campaign targeting our external audience (subscribers: circa 10k). We also promote our newsletter during our events: we gained 106 subscribers via an emailing for "Perspectives: The Young Architects' Forum" in Barcelona.

We also sent out 5 MOIS, the Member Organisations Info Sheet, targeting our Members with 2 Special editions dedicated to the ACE General Assembly and conferences.

EVENTS/CONFERENCE

In 2019 we designed international and national events for multiple audiences, from MEP's to young Architects:

- a Conference, in Innsbruck, on *How to Achieve Quality in the Built Environment: Quality assurance tools and systems*
- an Energy Day during the EU Sustainable Energy Week;
- a Policy Seminar on Quality Architectural Services for a Sustainable Built Environment with MEPs at the European Parliament;
- two viewings of the exhibition of 20 architectural projects that mitigate the worst effects of Climate Change (the first at the European Parliament; the second at Tour & Taxis in Brussels);
- a workshop with DG EAC, during the EU Week of Regions & Cities on *the adaptive re-use of our built heritage for a greener Europe*
- an International Conference on Design Competitions with the UIA at UNESCO headquarters in Paris;
- "Perspectives: The Young Architects' Forum" in Barcelona.



NEW ALGARD CENTRE


Algard, Norway

Architect: C.F. Møller Architects in collaboration with Haugen/Zohar Arkitekter

Landscape: C.F. Møller Architects in collaboration with Dronninga landskap

Photo: Dronninga landskap





AXEL TOWERS
Copenhagen, Denmark
Architects: Lundgaard & Tranberg Architects
Photo: Anders Sune Berg

STRATEGIC ALLIANCES & NETWORKS

ACE has developed relationships with other networks to strengthen the voice of the profession in the EU.

EUROPEAN ASSOCIATION FOR ARCHITECTURAL EDUCATION (EAAE)

ACE and EAAE continue to work together on ERASMUS+ projects and the Young Talent Architecture Award.

EUROPEAN NETWORK FOR ARCHITECTURAL COMPETENT AUTHORITIES (ENACA)

ACE and ENACA work together to address current mobility issues such as mixed qualifications.

INDUSTRY BODIES

ACE continues to work closely with other pan-European organisations in the construction industry including EFCA, FIEC, EHF and others.

INTERNATIONAL UNION OF ARCHITECTS (UIA)

Joint initiatives including an International Conference on Design Competitions at UNESCO, a Key Policy Tool to Ensure Quality in the Built Environment.

MEMBER ORGANISATIONS

While ACE advocates common positions to the European Commission and Parliamentary Committees, we rely on Member Organisations to present these to their own MEPs, Council of Ministers, National Representations and National Coordinators. Our Member Organisations have also proved invaluable partners for the organisation of specific initiatives e.g. the CSCAE for "Perspectives: The Young Architects' Forum" in Barcelona.

Involvement of MOs in EU funded projects +++

ACE also intervened, when invited, in support of national advocacy. In 2019, letters of support were sent to member organisations in Germany, Greece, Poland, Portugal and Malta.

MIES VAN DER ROHE FOUNDATION

collaboration continued, following the merger of the ACE / EAAE Best Diploma Prize with Mies van der Rohe Young Talent Architects Award, the 2020 edition of which was launched at the ACE Conference in Barcelona.

REGIONAL ORGANISATIONS

ACE continues to develop its cooperation with regional organisations around the world – namely the Architects Regional Council of Asia (ARCASIA), the Africa Union of Architects (AUA) and the Pan-American Federation of Architects' Associations (FPAA).

ESTONIAN ACADEMY OF ARTS
Tallinn, Estonia

Architect:
Juhan Rohhtla, Koit Ojaliv and Joel Kopli, together
with philosopher Eik Hermann.
Office's name: KUU architects
Photo: Tõnu Tunne



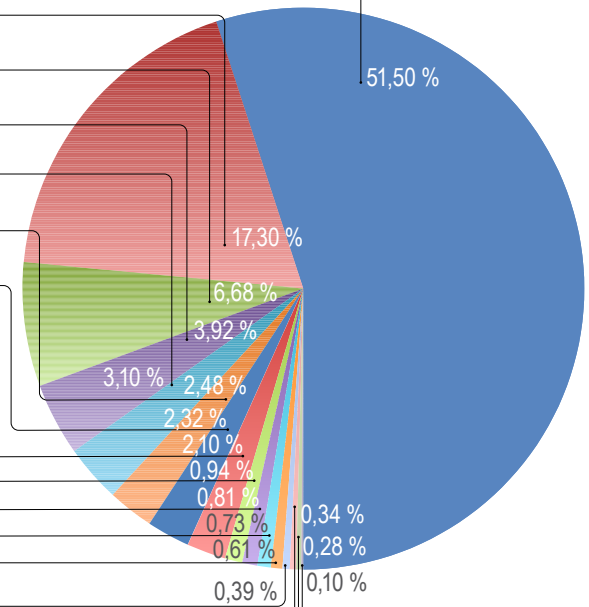


TREASURER'S REPORT & FINANCIAL OUT-TURN FOR 2019

Fulgencio Aviles Ingles

EXPENDITURE

Staff costs	€ 612.250
Projects	€ 205.629
Executive Board expenses	€ 79.442
Premises	€ 46.563
ACE meeting expenses	€ 36.799
Activities	€ 29.494
Professional fees	€ 27.579
Other operating expenses	€ 25.019
Motor vehicle expenses	€ 11.151
Communications	€ 9.678
Office supplies & services	€ 8.699
Insurance	€ 7.303
Membership fees	€ 4.630
Depreciation & provision	€ 4.074
Maintenance	€ 3.335
Financial expenses	€ 1.199
Transfer to the reserve fund	€ 76.035

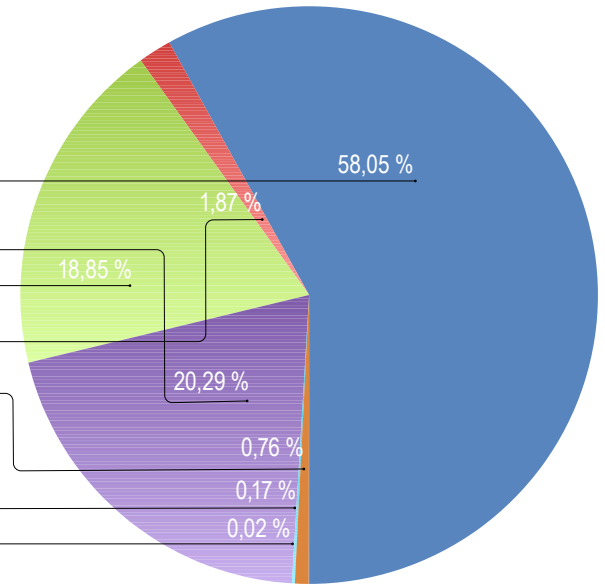


TOTAL EXPENSES

€ 1.188.879

INCOME

Members subscriptions	€ 690.091
EU Research activities	€ 241.172
Creative Europe activities	€ 224.136
ACE activities	€ 22.212
Recovered expenses	€ 9.067
Financial income	€ 1.967
Other income	€ 234



TOTAL INCOME

€ 1.188.879

ACE STRUCTURE (governance, membership)

The Architects' Council of Europe is an international, not-for-profit association consisting of a General Assembly; an Executive Board; and a Permanent Secretariat in Brussels.

The **General Assembly** is composed of Delegates from all Member Organisations. It is the sovereign body and meets twice a year to adopt ACE policies and budgets.

The function of the **Executive Board** is to execute policies approved by the General Assembly and to ensure the proper administration of ACE. It is composed of 11 Members.

The **Secretariat's** main function is to support the governance structure of ACE and to act as the permanent interlocutor of the EU institutions in furtherance of ACE's advocacy work.

2019 EXECUTIVE BOARD MEMBERS



**georg
pendl**
President



**Philippe
Klein**
Vice-President



**Fulgencio
Aviles Ingles**
Treasurer



**Ruth
Schagemann**
Coordinator,
Access to
the Profession



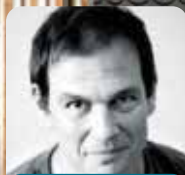
**Dubravko
Bacic**
Coordinator,
Practice of
the Profession



**Eugen
Panescu**
Coordinator,
Quality in the Built
Environment



**Paula
Huotelin**
Strategic
Development



**Pavel
Martinek**
Vice-Treasurer,
Communication



**Jose-Manuel
Pedreira**
Vice-Coordinator,
Access



**Indrek
Näkk**
Vice-
Coordinator,
Practice
Deceased 23 June 2019



**Ales
Vrhovec**
Vice-Coordinator,
Quality in the Built
Environment

HOUSE
CELOVSKA 01
Ljubljana, Slovenia
Architect: ALPIN
+ Vanja Gregorc
Vrhovec, Ales
Vrhovec
Photo: Damja Svarc

STAFF

Ian Pritchard



Secretary General

Caroline André



Head of Administration

Julie Deutschmann



Communications Officer

Catalina Olteanu



Administrative Assistant

Pierre Obajtek



Policy Officer

Veronika Schröpfer



Head of EU Projects

Larissa de Rosso



Assistant Project Officer

Gloria Oddo



Assistant Project Officer



SUND NATURE PARC
Copenhagen, Denmark

Architects: SLA
Collaborators: C.F.Møller Architects, Rambøll,
Skælskør Landscapers, Byggras
Photo: SLA

POLITICAL CONTEXT AND PRIORITIES FOR 2020

TRIO PROGRAMME

The 18 month Programme of the Council (the “trio programme” prepared by the Romanian, Finnish and Croatian Presidencies) enters its last semester with the Croatian Presidency starting in January 2020. The Trio has been trying to facilitate the finalisation of negotiations on the Multi-annual Financial Framework (2021 – 2027 budget), paying particular attention to achieving the right balance of traditional policies and shared new priorities and challenges. The next Trio of Presidencies (Germany – Portugal – Slovenia) will start in July 2020.

NEW STRATEGIC AGENDA 2019 – 2024

In 2019, the European Council agreed on an agenda for the EU for the next five years. 'A new strategic agenda 2019-2024' sets out the priority areas that will steer the work of the European Council and provide guidance for the work programmes of other EU institutions. It focuses on four main priorities:

- protecting citizens and freedoms;
- developing a strong and vibrant economic base;
- building a climate-neutral, green, fair and social Europe;
- promoting European interests and values on the global stage

A strong economic base is of key importance for Europe's competitiveness, prosperity and role on the global stage and for the creation of jobs. Of relevance to ACE is the ambition to deepen and strengthen the Single Market, particularly in the area of Services, digital transformation and fostering entrepreneurship, innovation and research.

The EU will also promote a level playing field in the area of trade, ensuring fair competition within the EU and on the global stage. Climate transition will afford the opportunity to modernise and become a global leader in the green economy. Architects can help to improve the environment in our cities and countryside. The EU will also invest in culture and cultural heritage, following the Council Resolution on the cultural dimension of sustainable development.

A UNION THAT STRIVES FOR MORE – POLITICAL GUIDELINES FOR THE NEXT EU COMMISSION

The new EU Commission, chaired by Ursula von der Leyen, took office in December 2019. It will focus on six priorities over the next five years:

- A European Green Deal
- An economy that works for people
- A Europe fit for the digital age
- Protecting our European way of life
- A stronger Europe in the world
- A new push for European democracy

In December 2019, the Commission already presented its European Green Deal - *“new growth strategy that aims to transform the EU into a fair and prosperous society, with a modern, resource-efficient and competitive economy where there are no net emissions of greenhouse gases in 2050 and where economic growth is decoupled from resource use”*.



UNITÉ(S)
40 MODULAR HOUSING UNITS AND A COMMON SPACE
Dijon, France
Architect: Sophie Delhay Architect
Photo: Bertrand Verney photographer

IN 2020 THE ARCHITECTS' COUNCIL OF EUROPE PLANS TO

ADVOCACY

- **CONTRIBUTE** to the work of the Council's expert group on High-quality architecture and built environment for everyone;
- **PREPARE** up-dated policy positions on public procurement in the light of the 2019 survey;
- **FINALISE** preparations for the next review of the Professional Qualifications Directive including ACE position on Mixed Qualifications;
- **CONTINUE** to respond to the on-going Legislative Package on Services (Reform Recommendations for professional regulation);
- **PARTICIPATE** in the on-going development of Smart Readiness Indicator and support the launch of the Level(s) scheme;
- **ENGAGE** with MEPs (new and existing); follow up on ACE priorities and those of the new Commission.

EVENTS

- **ORGANISE** a conference in Brussels on *Climate Change & Built heritage*;
- **ARRANGE** to send the ACE Climate Change exhibition to a number of EU MS;
- **TRAIN** 20 CPD trainers on nZEB within the RenoZEB project;
- **RUN** another webinar on BIM as a learning tool within the BIMplement project;
- **ORGANISE** a symposium on circular contraction in Dublin on 3 April within the Drive0 project;
- **HOST** an Energy Day during EUSEW in June in Brussels;
- **LAUNCH** the DigiPLACE video.

STUDIES & PUBLICATIONS

- **PUBLISH** second phase of Value study;
- **INITIATE** study on Quality;
- **UNDERTAKE** "next urban level" publication;
- **CONDUCT** questionnaire for 2020 edition of the ACE Sector Study;
- **CREATE** online facility for past Sector Studies with search engine;
- **PUBLISH** architect-client checklist;
- **PREPARE** study on new business models;
- **EXPLOIT** findings of the study on the impact of Regulation on cross-border trade in services;
- **PUBLISH** the 7th edition of the Sector Study.

WORK GROUPS

- **CONTINUE** to support new work groups (internationalisation, women in architecture, housing);
- **RESUME** MRA discussions with Mexico and respond to overtures from Australia;
- **PUBLISH** ACE Guide on Equality, Diversity & Inclusion;
- **DISSEMINATE** progress reports on ACE involvement in EU-funded projects.

DEVELOPMENT

- **PUBLISH** a new ACE Strategy for 2021 and beyond;
- **DEVELOP** a new Business Plan;
- **HOLD** a workshop to develop a Communications Strategy and Plan;
- **DEVELOP** a new 4-year Creative Europe programme (2021 – 2025).



LIST OF MEMBER ORGANISATIONS

AUSTRIA	Bundeskammer der Architekten und Ingenieurkonsulenten BAIK
BELGIUM	Conseil National de l'Ordre des Architectes CNOA Fédération Royale des Sociétés d'Architectes de Belgique FAB
BULGARIA	Chamber of Architects in Bulgaria CAB Union of Architects in Bulgaria UAB
CROATIA	Croatian Chamber of Architects CCA
CYPRUS	Cyprus Architects Association CAA
CZECH REPUBLIC	Czech Chamber of Architects CCA
DENMARK	Akademisk Arkitektforening AA Danish Association of Architectural Firms DA
ESTONIA	The Union of Estonian Architects UEA
FINLAND	Finnish Association of Architects SAFA
FRANCE	Conseil National de l'Ordre des Architectes CNOA Syndicat d'Architecture SA Union Nationale des Syndicats Français d'Architectes UNSFA
GERMANY	Bundesarchitektenkammer BAK Bund Deutscher Architekten BDA Bund Deutscher Baumeister Architekten und Ingenieure BDB Vereinigung Freischaffender Architekten VFA
GREECE	Association des Architectes Diplômés SADAS-PEA Chambre Technique de Grèce CTG
HUNGARY	Chamber of Hungarian Architects MEK
IRELAND	Royal Institute of the Architects of Ireland RIAI
ITALY	Consiglio Nazionale degli Architetti, Pianificatori, Paesaggisti e Conservatori CNAPPC
LATVIA	The Latvia Association of Architects LAA
LITHUANIA	Architects Association of Lithuania AAL Architects Chamber of Lithuania ACL
LUXEMBOURG	Ordre des Architectes et des Ingénieurs Conseils du Grand-Duché de Luxembourg OAI
MALTA	Kamra tal-Periti KTP
NETHERLANDS	Bond van Nederlandse Architecten BNA Bureau Architectenregister BA
NORWAY	Association of Consulting Architects in Norway ACA Norske Arkitekters Landforbund NAL
POLAND	Polish Chamber of Architects IARP
PORTUGAL	Ordem Dos Arquitectos OA
ROMANIA	Romanian Order of Architects OAR
SLOVAKIA	Slovak Chamber of Architects SKA
SLOVENIA	Chamber of Architecture and Spatial Planning of Slovenia ZAPS
SPAIN	Consejo Superior de los Colegios de Arquitectos de España CSCAE
SWEDEN	Swedish Association of Architects SA Federation of Swedish Innovation Companies FSIC
SWITZERLAND	Conférence Suisse des Architectes CSA
UNITED KINGDOM	Architects Registration Board ARB Royal Institute of British Architects RIBA
Observer Members	
SERBIA	Union of Architects of Serbia UAS



ARCHITECTS' COUNCIL OF EUROPE
CONSEIL DES ARCHITECTES D'EUROPE