



Mei architects and planners

**Mei architects and planners
Robert Winkel**

**—
ACE Conference Brussels
18.04.2024**

Mei architects and planners

International architecture studio based in Rotterdam



35 people
make our office a happy place

12 Nationalities

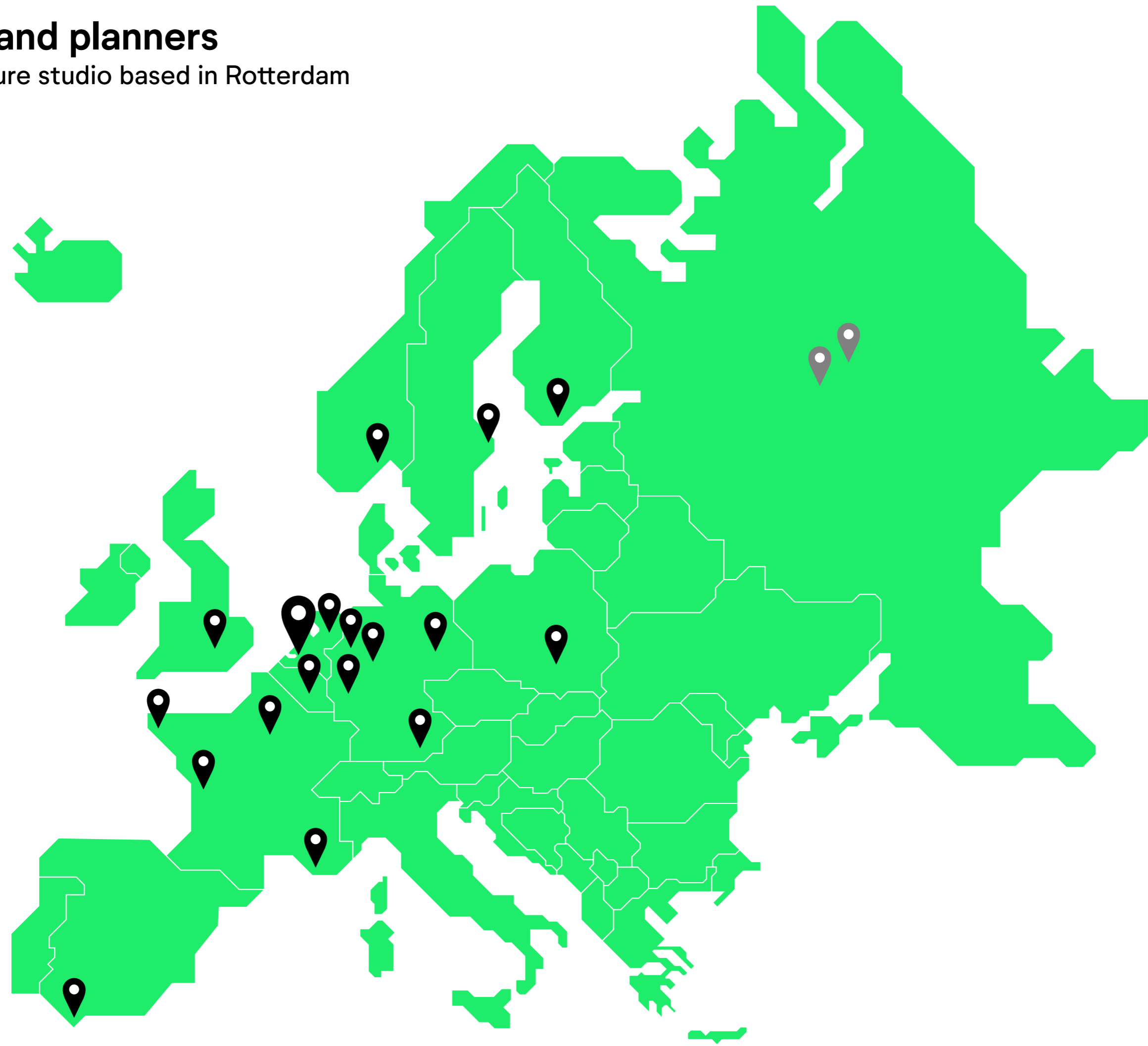
34
average age

68% works parttime

37,5% works fulltime

Mei architects and planners

International architecture studio based in Rotterdam



Excelling in transformation projects in EU 2000 – 2020



Existing & New

Blending and blurring, 6 examples of transformation projects in the Netherlands



Redevelopment of listed storage warehouse into lofts | Jobsveem, [Rotterdam, NL](#)



Loft homes in monumental Cheese Warehouse | Kaaspakhuis, [Gouda, NL](#)



Unique loft apartments in monumental swimming pool | Spaardersbad, [Gouda, NL](#)



Renovation of the world famous as the first car-free shopping promenade | Lijnbaan, [Rotterdam, NL](#)



From an empty office tower to a beacon of light with unique apartments | De Generaal, [Rijswijk, NL](#)



former electricity power plant transformed to creative workspaces | 25kV Building [Rotterdam, NL](#)

Existing & New

Urban planning; 3 examples of large scale transformation projects in the Netherlands



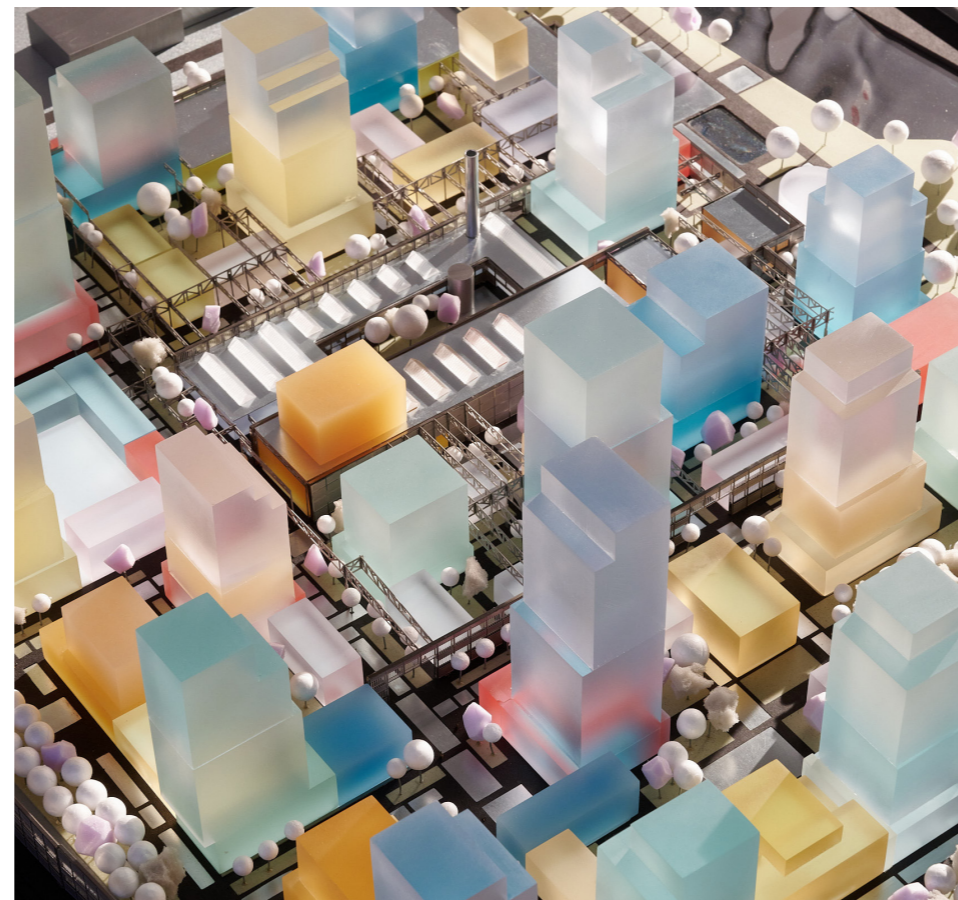
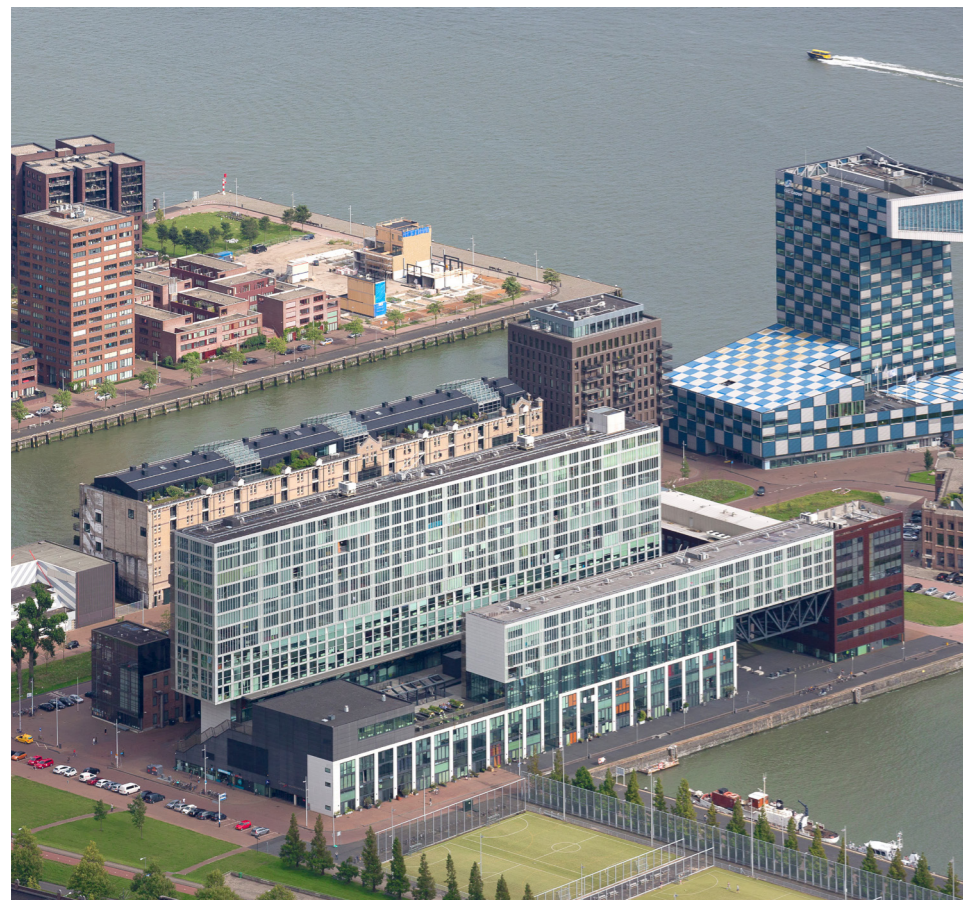
From harbour area and power plant to vibrant center for creative industry | Lloydkwartier, **Rotterdam, NL**



Transformation of former cable factory into a vibrant living and working environment | Kabeldistrict, **Delft, NL**



Urban residential area with strong landscape character | Burgemeesterkwartier, **Gouda, NL**



Exporting distinct knowledge internationally

6 examples transformation projects in the EU – teaming up with local architects



UK

Listed monument | post WWII | shopping area | Rainham

London UK

In collaboration with: Atkins



NO

Transformation of paper factory site into a green, and healthy urban area

Moss, NO

In collaboration with: Asplan Viak

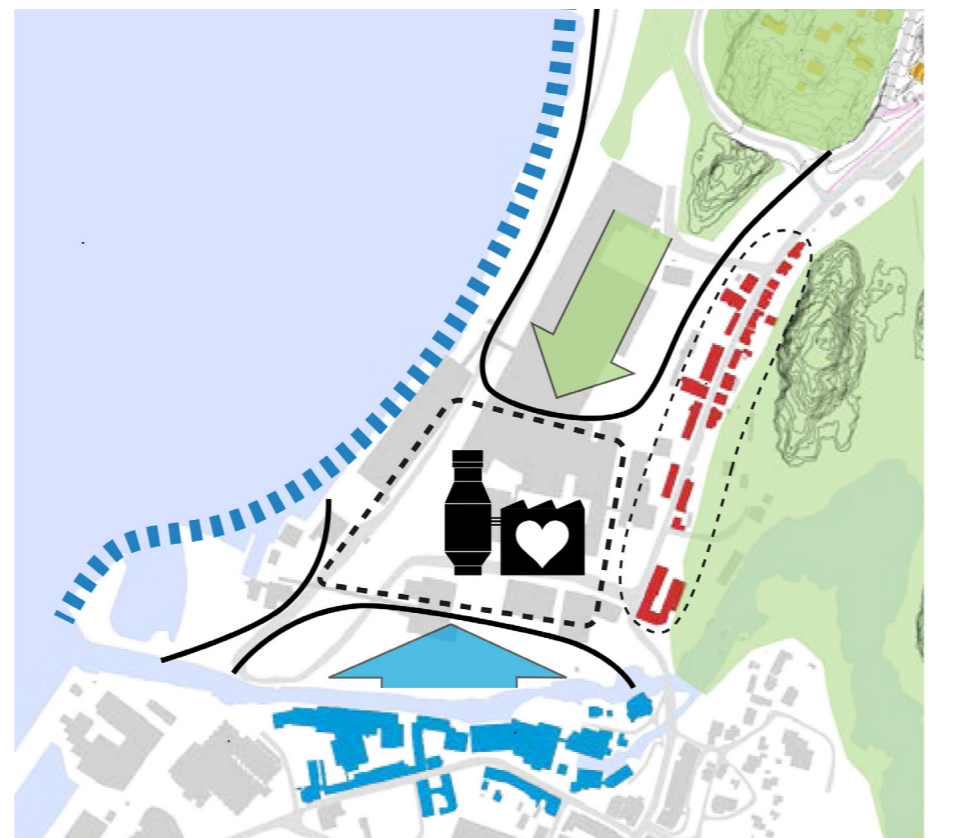
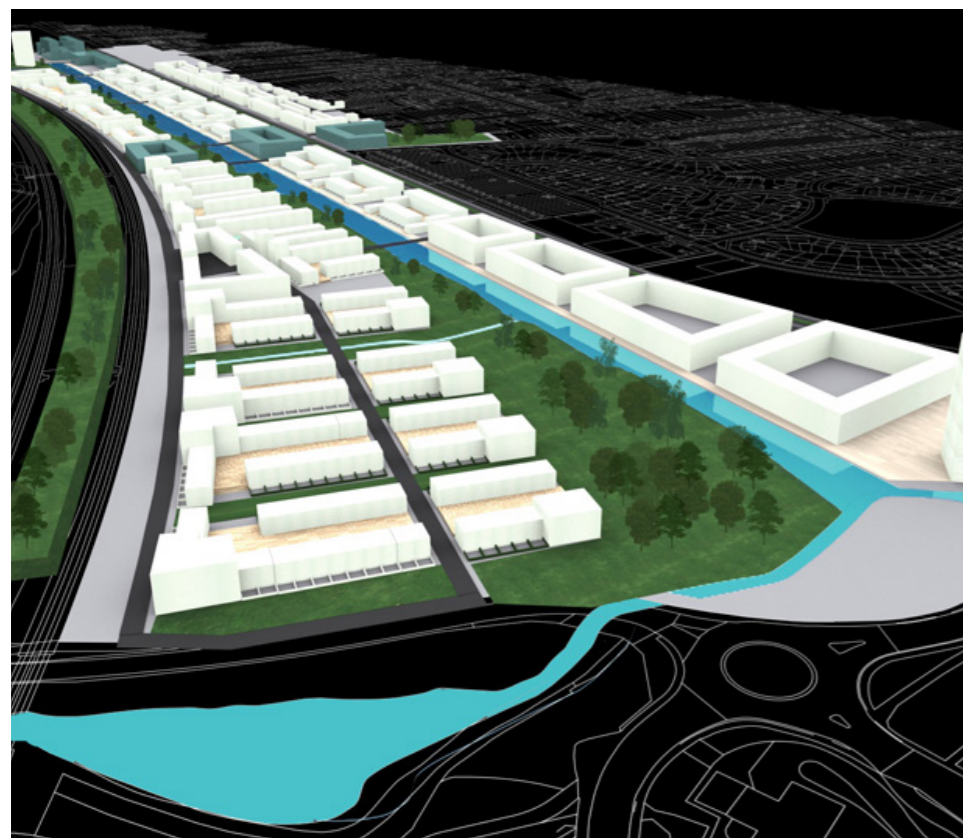


DE

Redevelopment of a former mine complex, Creativ Revier

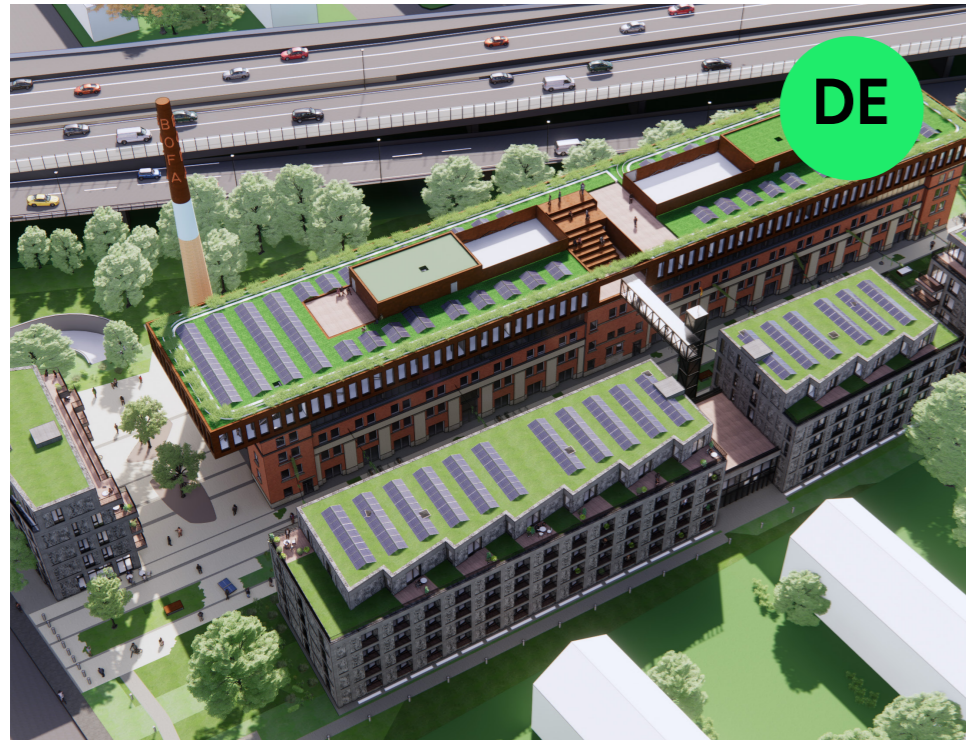
Hamm, DE

In collaboration with: Bahl Architekten



Exporting distinct knowledge internationally

6 examples transformation projects in the EU – teaming up with local architects



Transformation of flag factory into comfortable living-working ensemble

Bonn, DE

In collaboration with: **Gaus Architekten**



Transformation of Desiré Colombe quarter, preservation of historical buildings and park

Nantes, FR

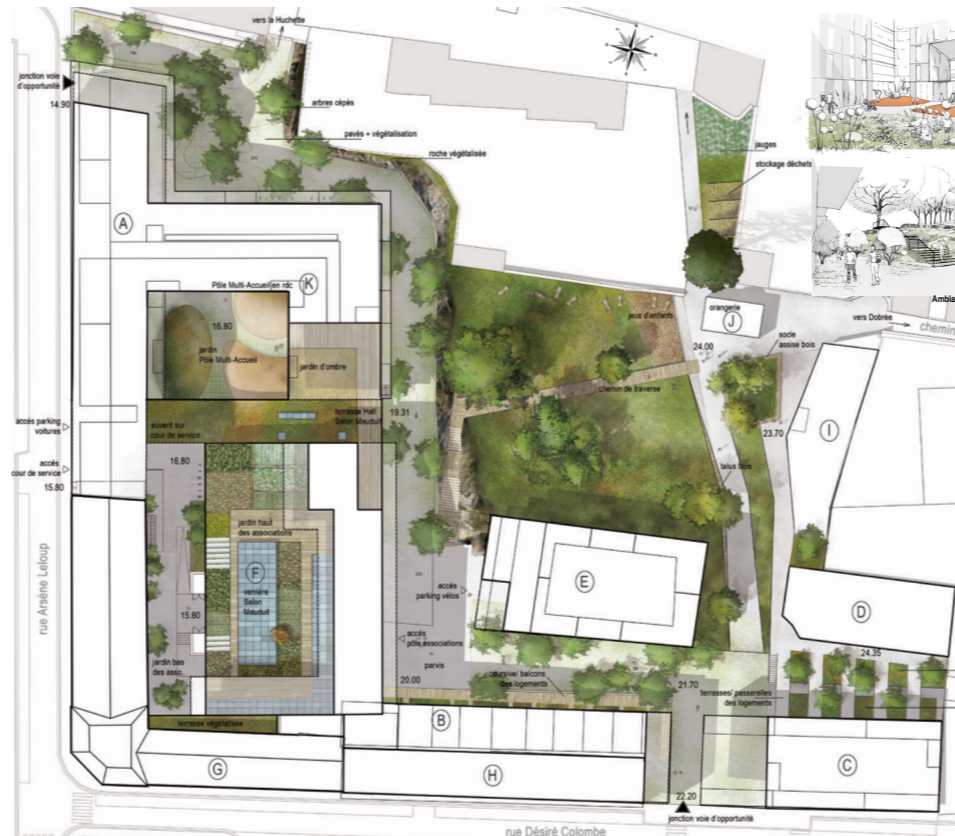
In collaboration with: **Arcature architectes**



Transformation of inner-city garage into ultra-sustainable community building

Paris, FR

In collaboration with: **Palissad Architectures**



Fenixl

Rotterdam

The Netherlands

2020

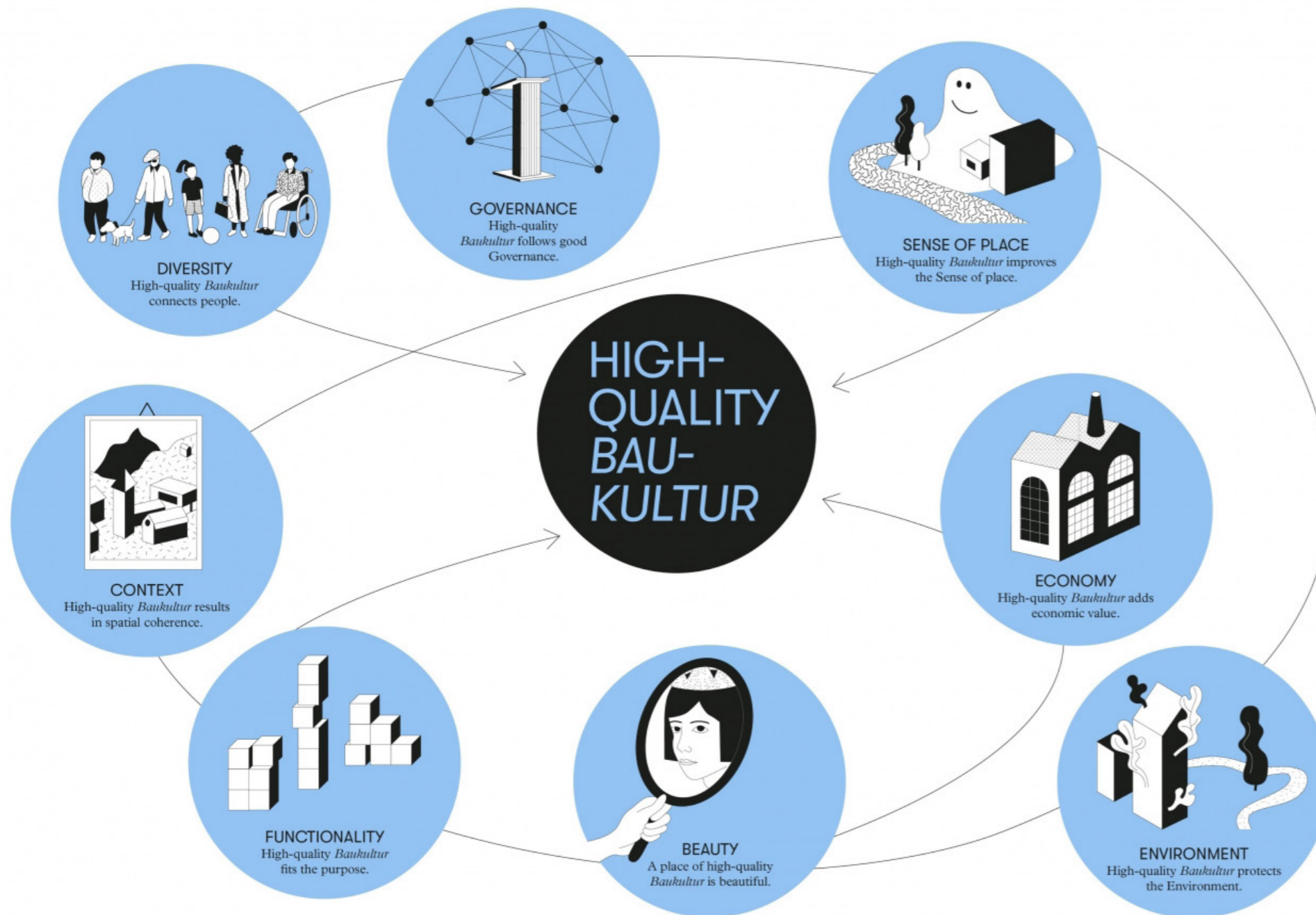


21 international awards



2018 – Davos Baukultur Quality System

8 criteria for a high-quality Baukultur



- Governance
- Functionality
- Environment
- Economy
- Diversity
- Context
- Sense of Place
- Beauty

Taking responsibility

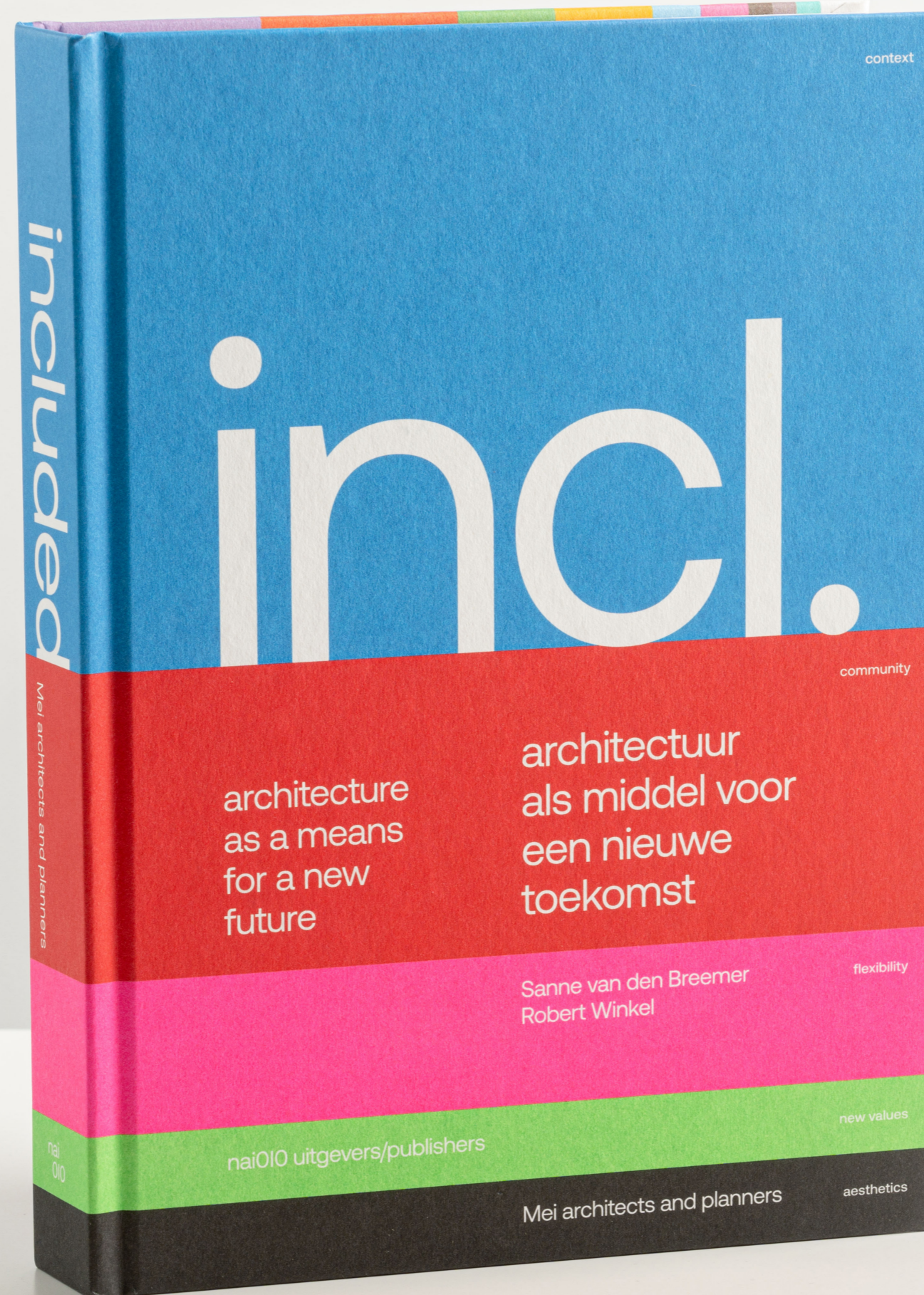
External roles of social importance and quality advisor in the public domain



- Chairman of the Spatial Quality Committee of Amsterdam
- Chairman quality team Feyenoord City Rotterdam
- Expert advisory board of Projektbüro Innenstadt Bremen
- Initiator Timber developments, NICE developers

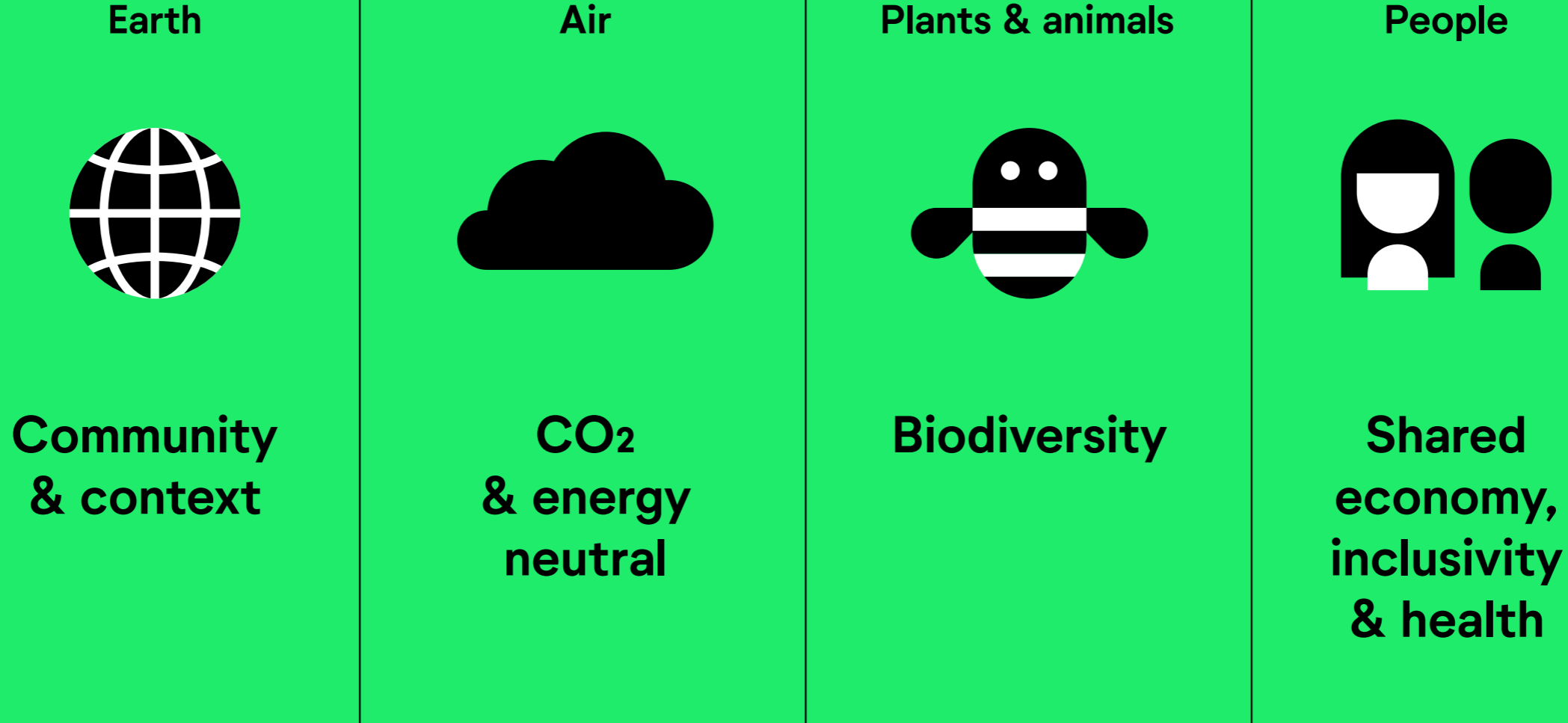
Renewing and evolving

Passing on knowledge, make it count



- context
- community
- flexibility
- new values
- aesthetics

'Architecture is
not an end,
but a means to
a better future'



SAWA

Rotterdam

The Netherlands

2020-2025





**1st
full timber
circular
building
in Europe**

**750.000
mountings**

**total of
4.800 tons
CO2 stored
in wood**

**3.000
plants
integrated
in design**

**50%
mid market rent
apartments**

Flexibility | Main bearing construction

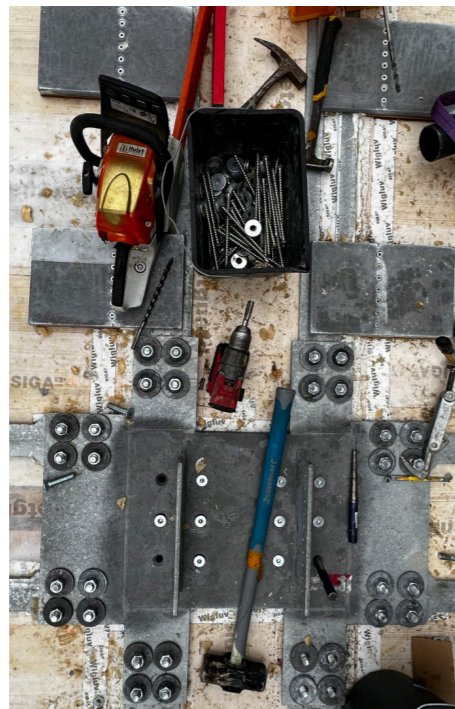
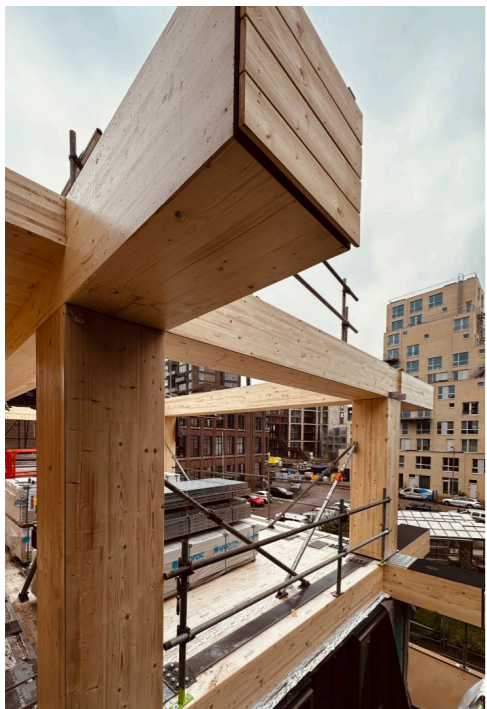
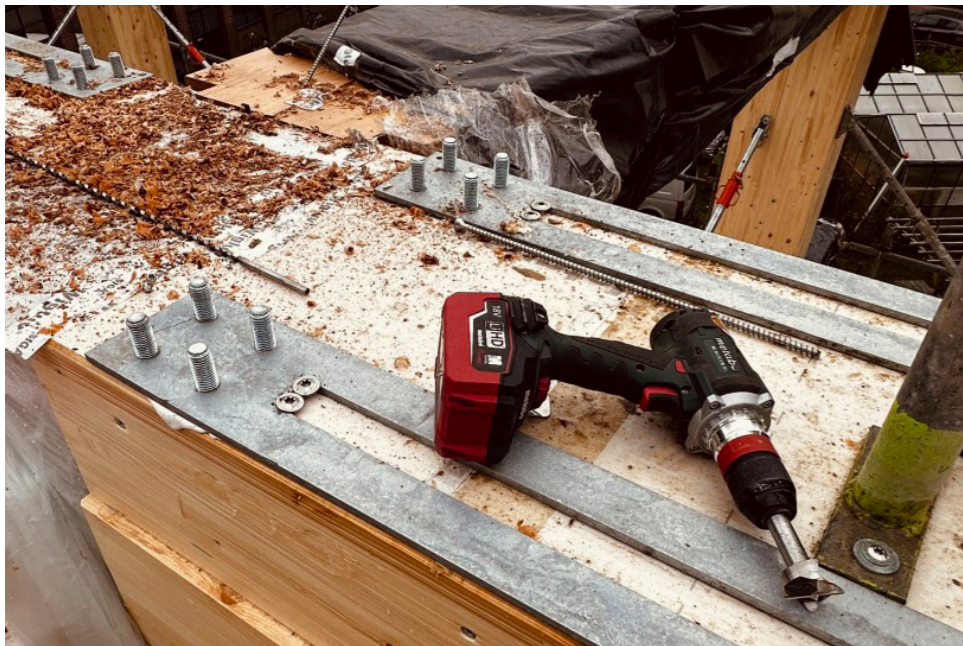
Open structure using columns and beams



Circularity | 90% demountable to pure building material

Installations separated from the floor making the construction circular and detachable





Completion
Q1 2025

Financial Times:

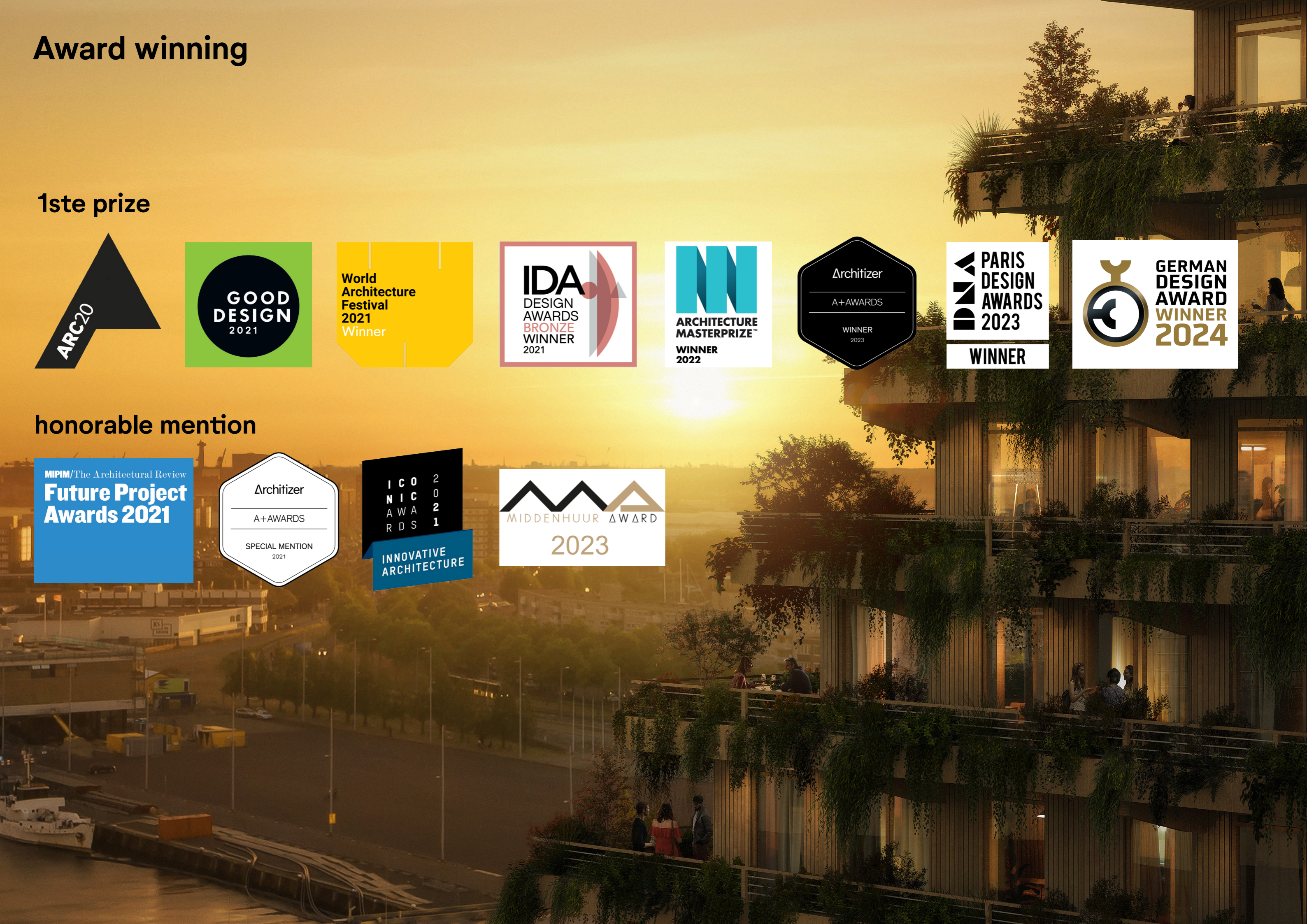
'SAWA is paving the way to a climate-conscious future. The challenge for SAWA is to set an example that is impossible for mainstream developers and investors to resist.'

Award winning

1ste prize



honorable mention



European project – European team of experts

Innovation traject & partners



DE/CH: Pirmin Jung – engineer wooden construction

NL: Pieters Bouwtechniek – structural engineer

NL: Adviesbureau Hamerlinck – fire safety consultant

CH: ETH Zurich – fire safety consultant

EU: ARUP – structural engineer, fire safety + noise/vibrations

NL: Warranty Insurer SWK – structural engineer, fire safety + noise/vibrations

NL: Municipality of Rotterdam – structural engineer, fire safety + noise/vibrations

NL: TU Delft – structural engineer, fire safety + noise/vibrations

DE: TU München – structural engineer, fire safety + noise/vibrations

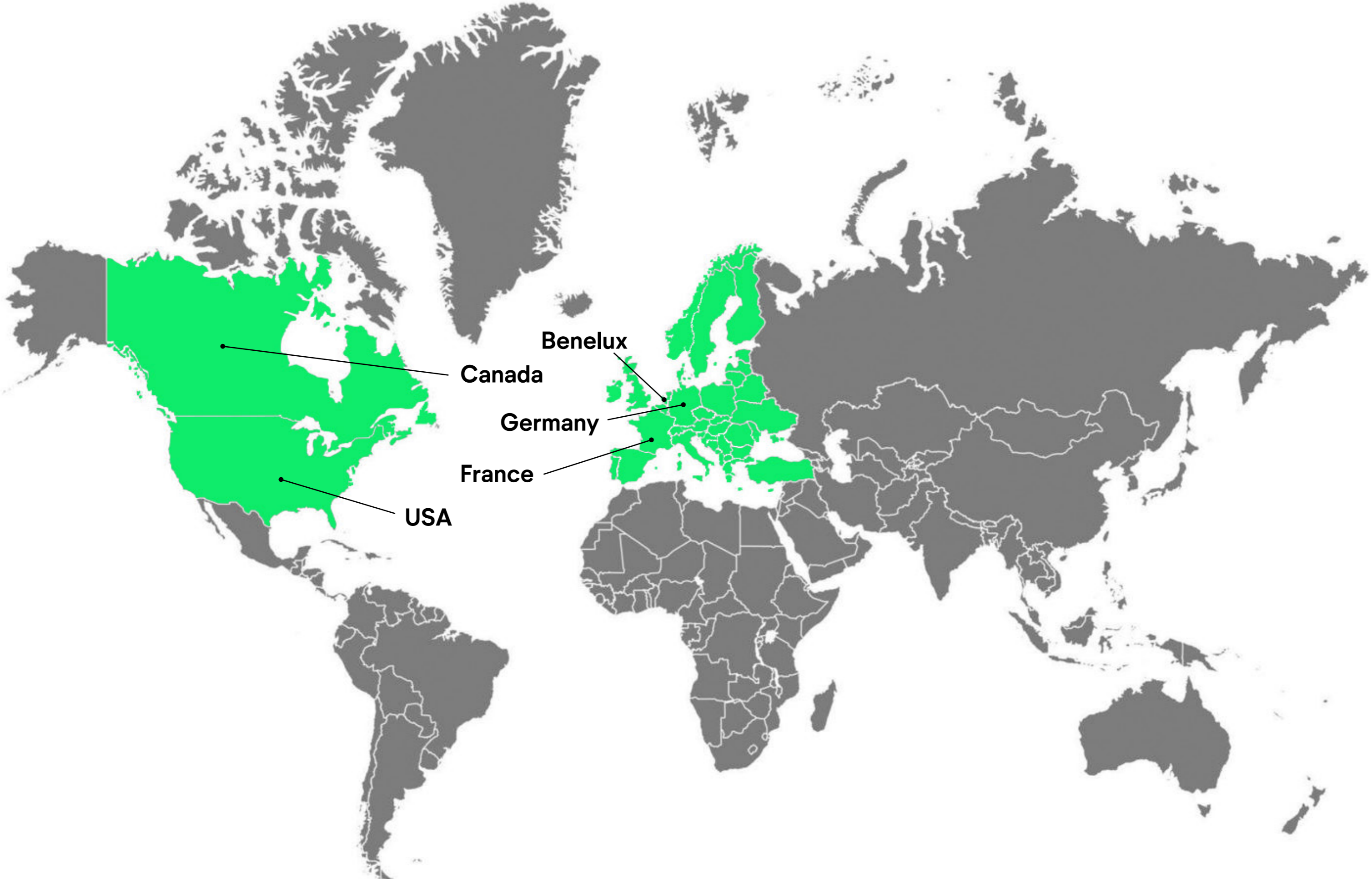
DE: KIT Holzbau und Baukonstruktion – structural engineer, fire safety + noise/vibrations

NL: Adviesbureau Hageman – construction safety consultant

Exporting knowledge & European values – beyond EU



Targeting Benelux, France, Germany, USA and Canada: most sensitive and matching Davos rules



SAWA

Knokke-Heist

Belgium

2024 -



Gasometer

Münster
Germany
2024





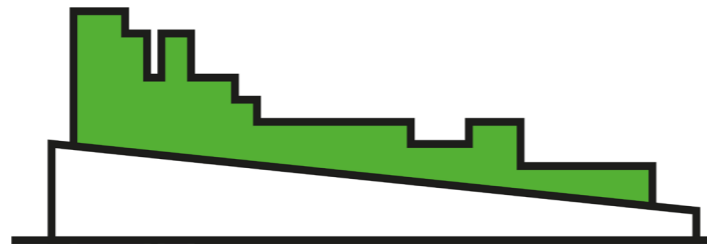
in
collaboration
with
**Peter Bastian
Architekten
(DE)**

Work in progress

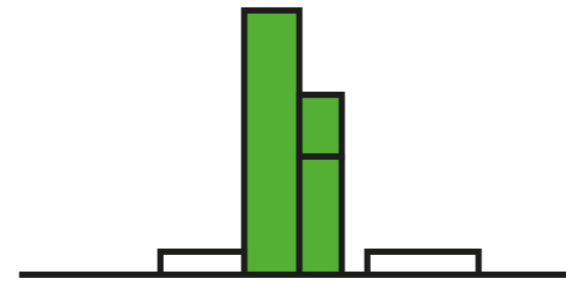
SAWA concept expanding across the EU



existing & new
approx. 9.000 sqm
residential (social) + care



existing & new
approx. 16.000 sqm
residential + working
+ facilities



new build
70 to 100m high
residential (social, midrent
and free sector) + working +
facilities



new build
approx. 8.000 sqm
residential (social)



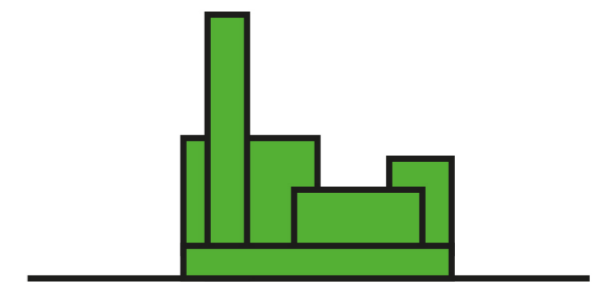
new build
approx. 7.000 sqm
residential + working



new build
approx. 10.000 sqm
residential + care
+ facilities



existing & new
approx. 34.000 sqm
residential (social, midrent
and free sector) + working +
facilities



new build
approx. 15.000 sqm
residential + working
+ facilities

The SAWA concept stands for carrying forward European values in the EU and beyond.

As such, it can be seen as an archetype for the New European Bauhaus principles.



New European Bauhaus
beautiful | sustainable | together