

Retrofit

Case studies in transformation and renovation with a circular approach.

20230622, Energy Week, Brussels
carl.backstrand@white.se

#whitearkitekter
www.whitearkitekter.com



**How can we use
existing material
smarter and more
efficiently?**

SELMA LAGERLÖFS CENTER, GÖTEBORG



- 92 % reuse
- Cost € 400 000
- € 900 000 cheaper than buying new furnitures

Selma

COREM OFFICE, KISTA STOCKHOLM

- 95 % reuse.
- 55 % of existing interior walls have been dismantled.
- 70 % of these have been reused.

white

MAINSTREAMING CIRCULARITY

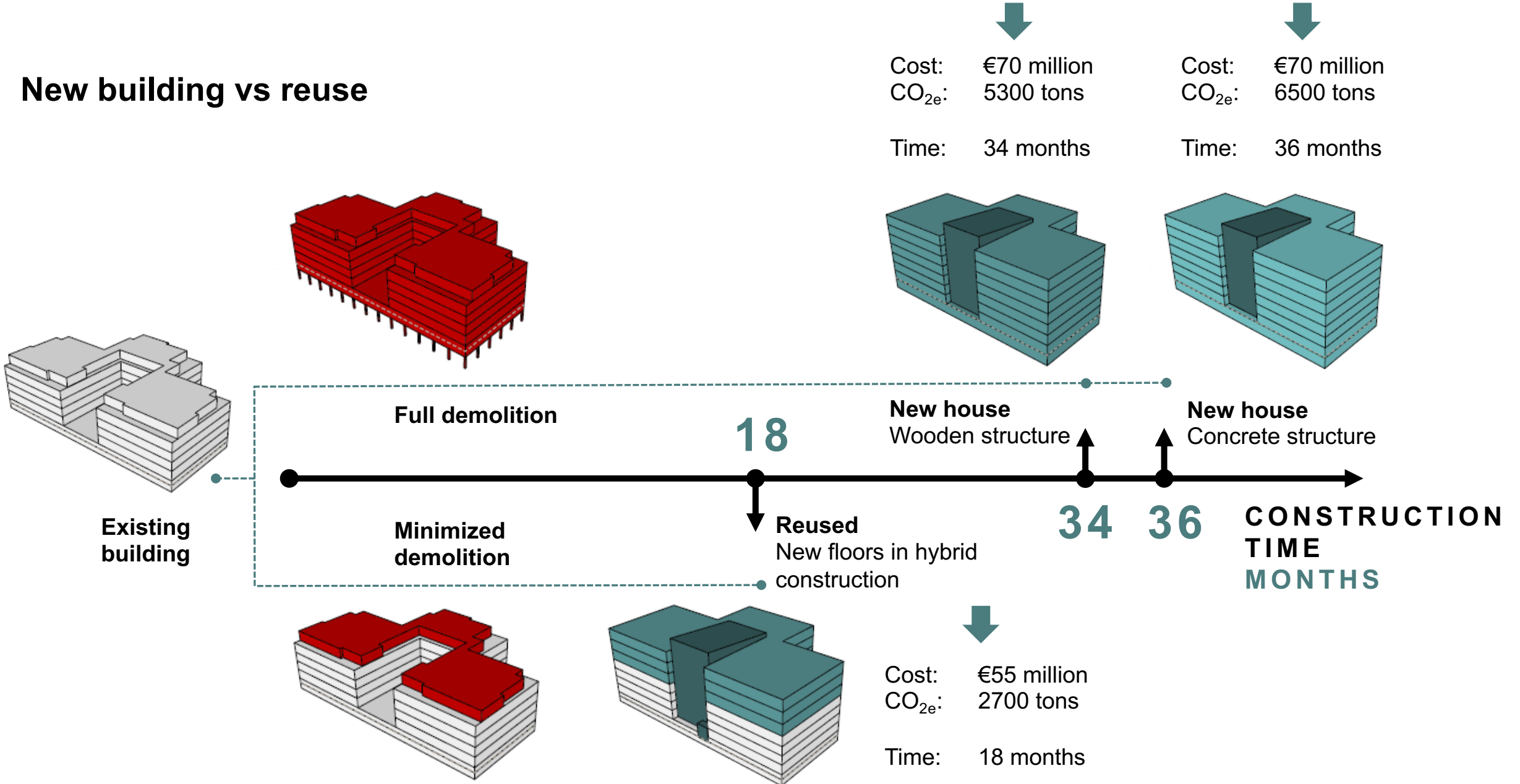
Shifting standards.

Reuse is the
first alternative!

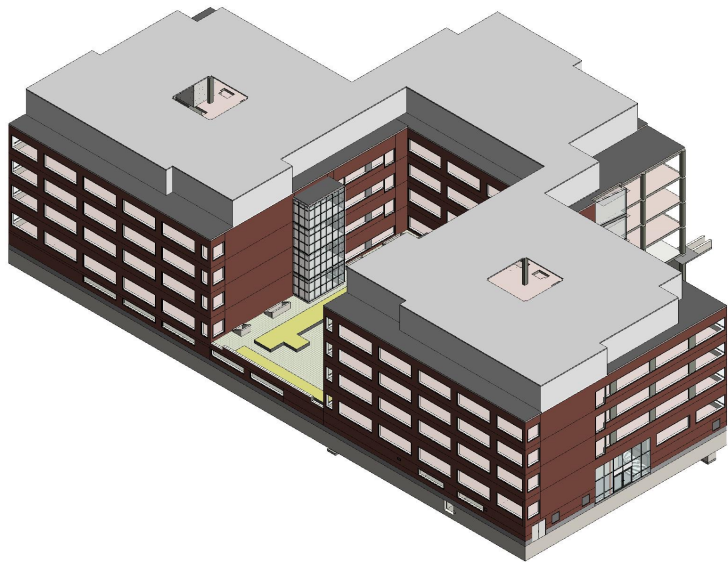


THE HUGIN BLOCK, UPPSALA

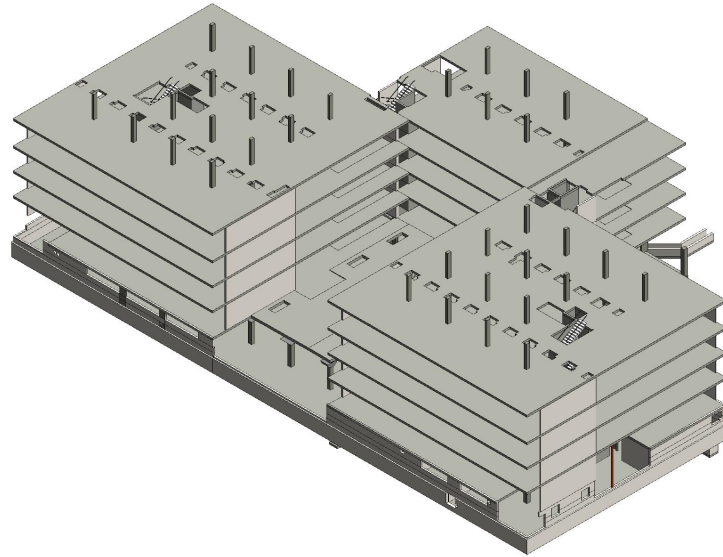
New building vs reuse



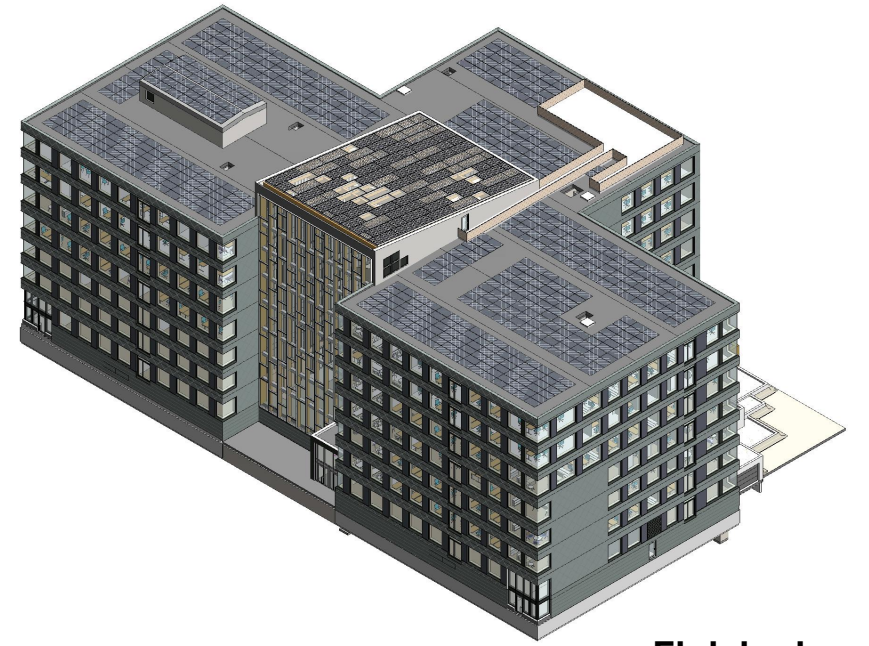
Saving foundations and structure



Existing building



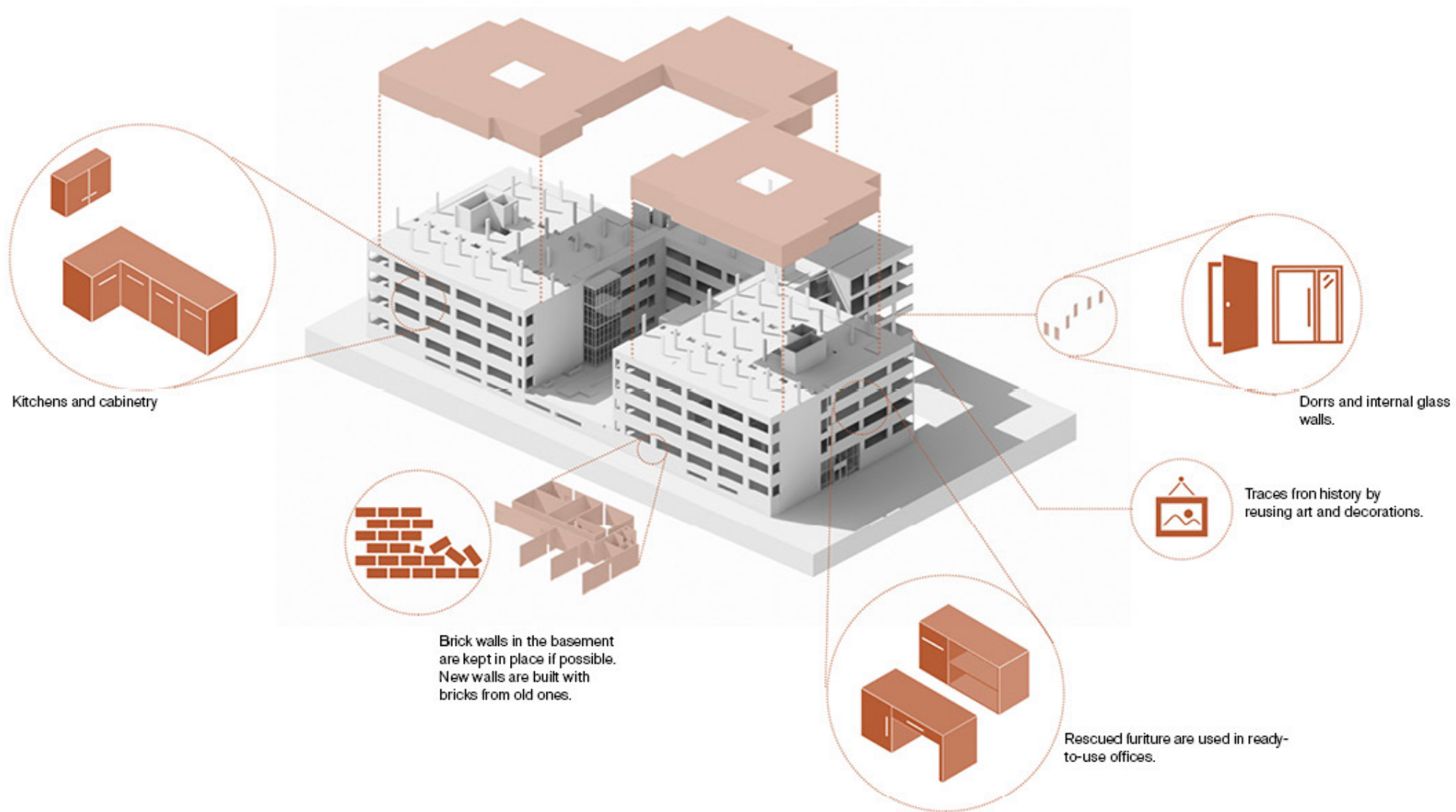
80-90 %
reused



Finished project

Projektet siktar på en så hög återbruksgrad som möjligt, men också på att göra det på rätt sätt.

Lightweight concrete floors are lifted to the new highest level.





Electrical components and other technical installations.



Ceilings



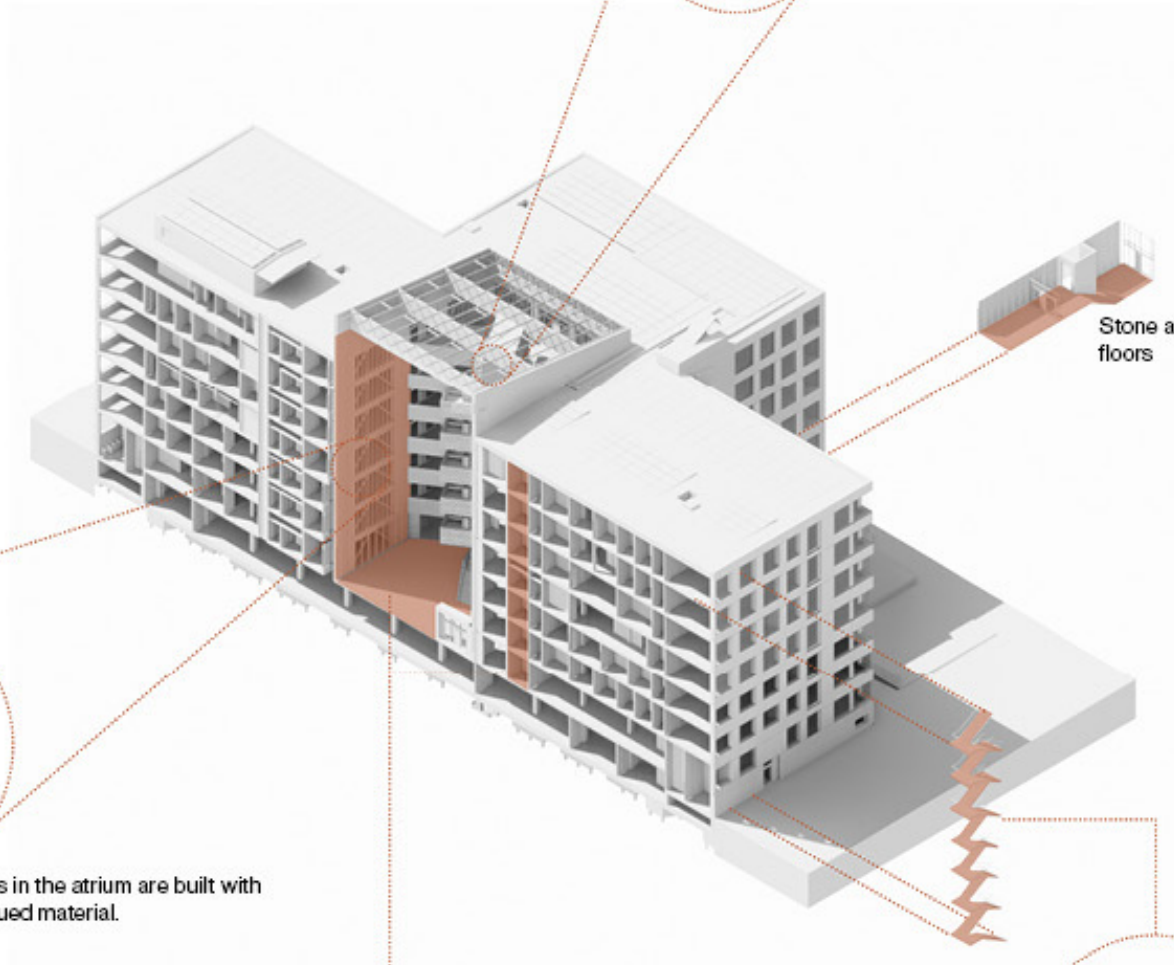
Walls in the atrium are built with rescued material.



Existing concrete is polished to floors where matting is not needed due to acoustic reasons.



elevators could be built with elements from the old ones.



Stone and wooden floors



Existing stairs are reused as emergency exits.



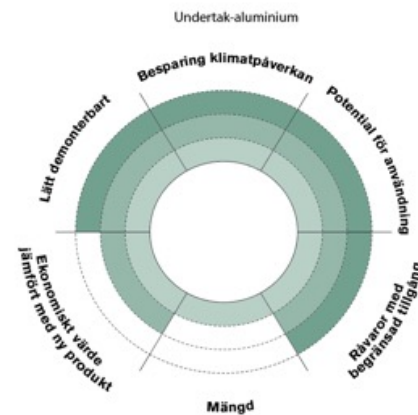
Integrating BIM in the circularity process



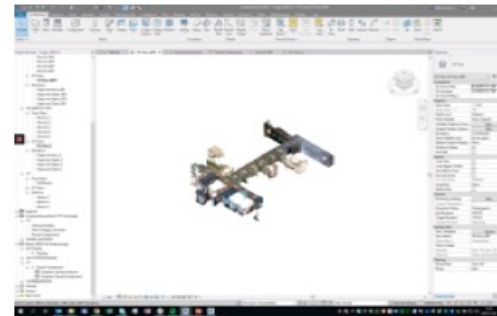
Scanning and indentifying



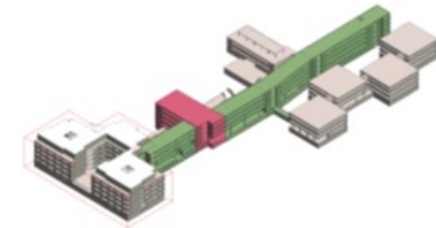
Inventory and assessment



Modelling



Advicing and planning



VIVALLA HOUSING 2400 UNITS, ÖREBRO



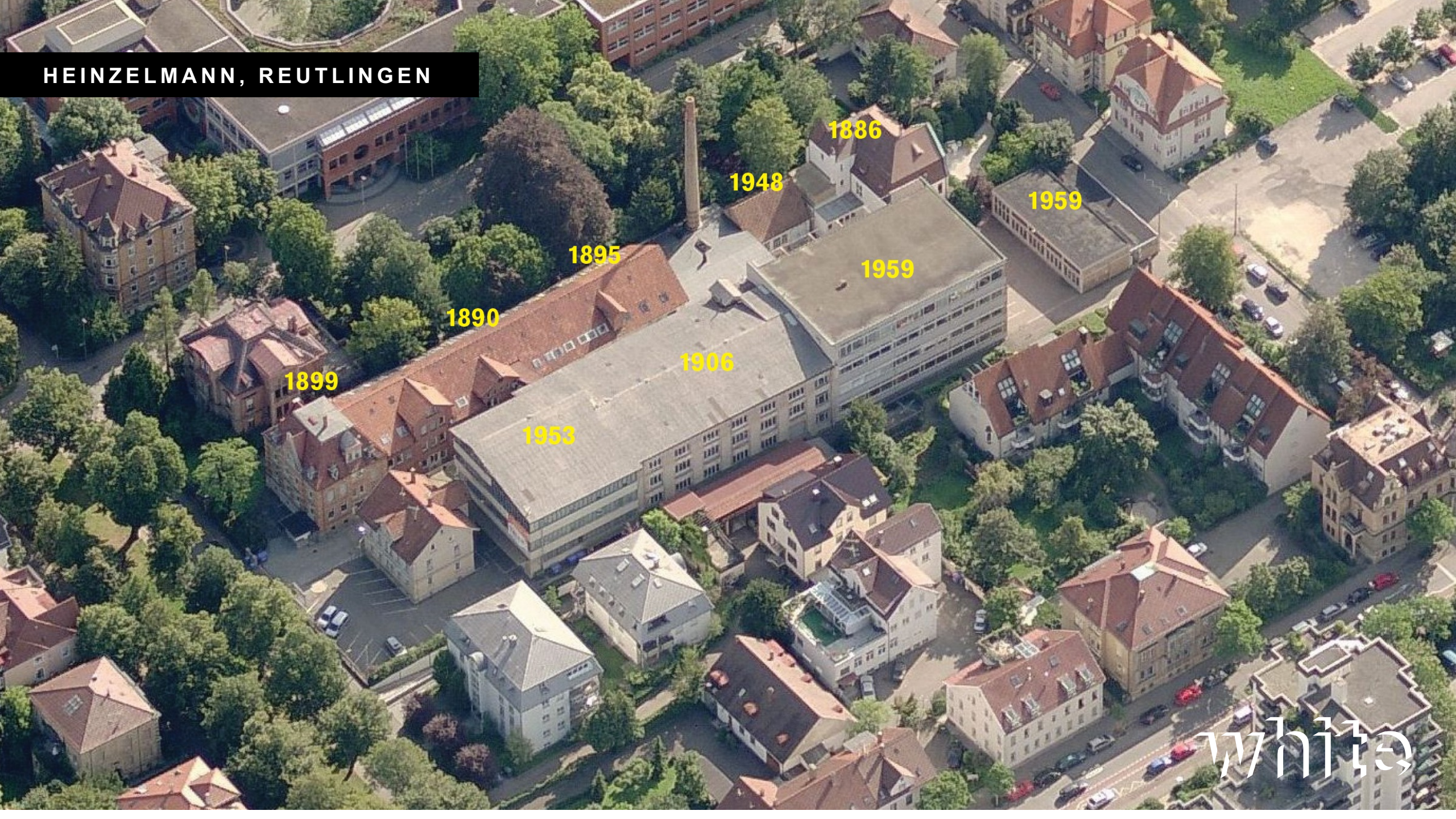
PRESCHOOL NOBELBERGET, STOCKHOLM



URBAN ESCAPE, STOCKHOLM



HEINZELMANN, REUTLINGEN



1899

1890

1895

1953

1906

1948

1886

1959

1959

white



CAFE

white

KARSTADT HERMANNPLATZ, BERLIN



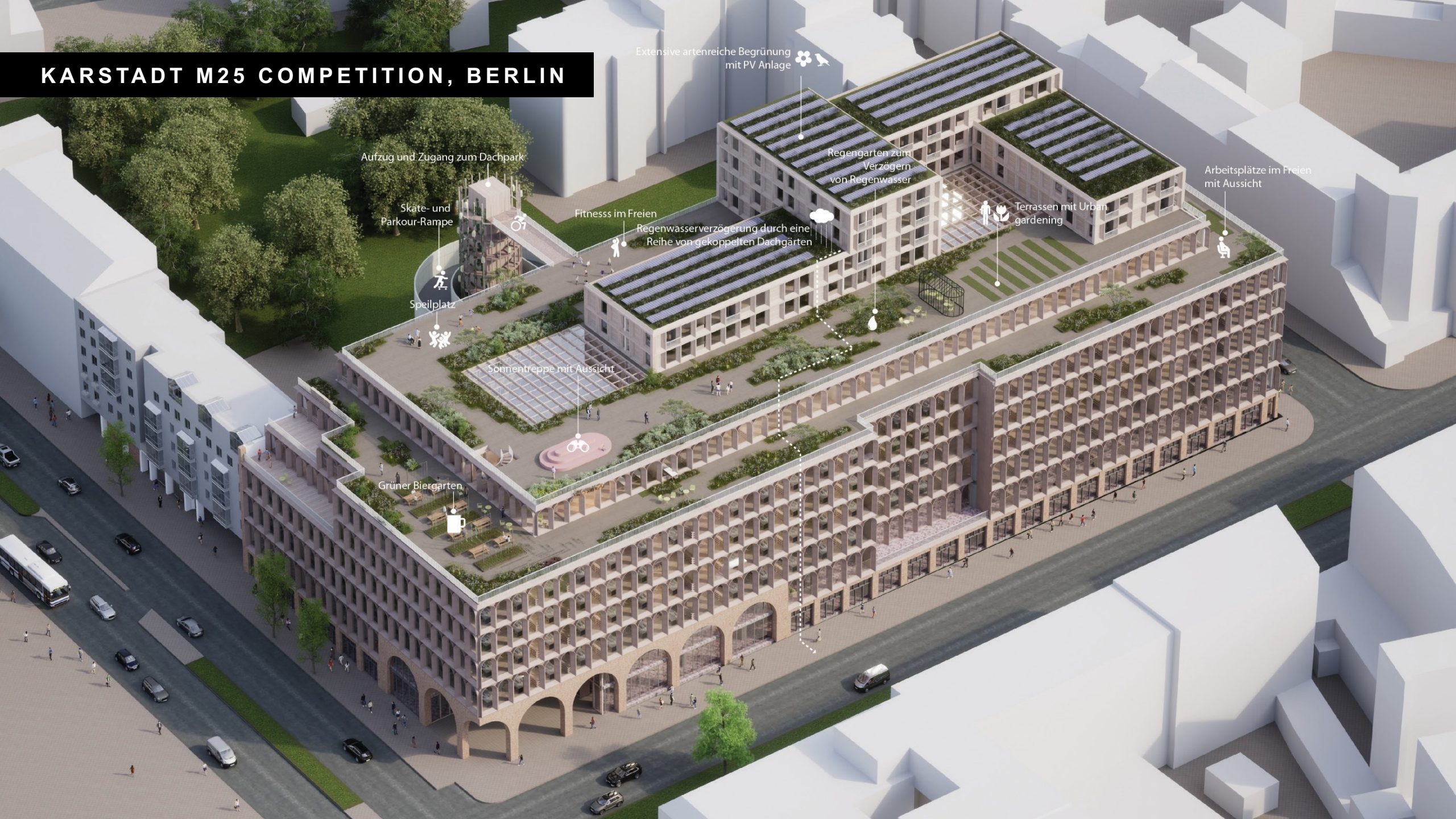
white

KARSTADT HERMANNPLATZ, BERLIN



white

KARSTADT M25 COMPETITION, BERLIN



Extensive artenreiche Begrünung
mit PV Anlage



Aufzug und Zugang zum Dachpark

Skate- und
Parkour-Rampe

Spielplatz

Fitness im Freien

Regenwasserverzögerung durch eine
Reihe von gekoppelten Dachgärten

Sonnentreppe mit Aussicht

Grüner Biergarten

Regengarten zum
Verzögern
von Regenwasser

Terrassen mit Urban
gardening

Arbeitsplätze im Freien
mit Aussicht

NEW DIGITAL TOOLS: COLLECTING, ANALYSING AND USING DATA

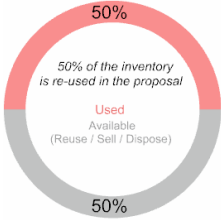


IMAGE: RECAPTURE

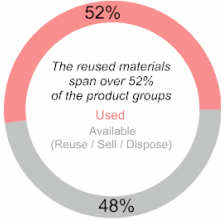
x: - m y: - m z: - m

Window Distance Limit Box

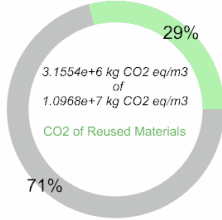




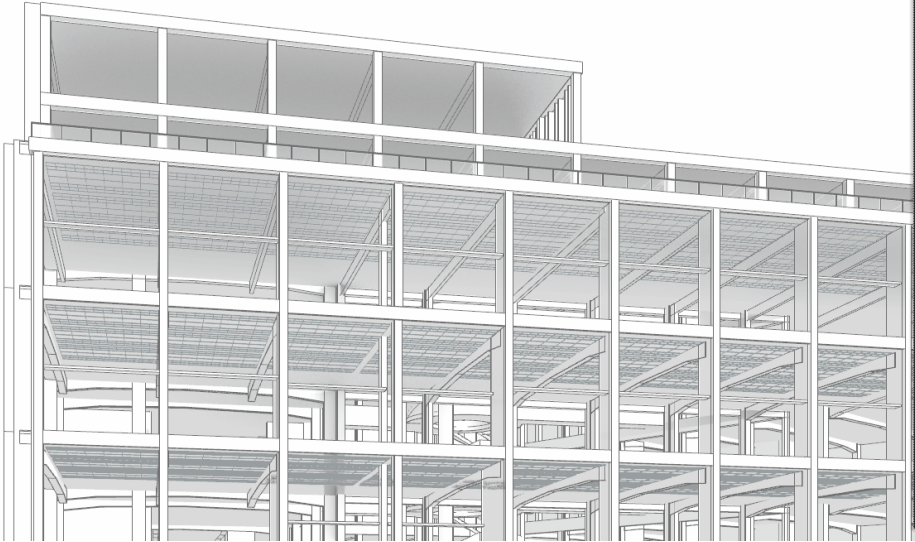
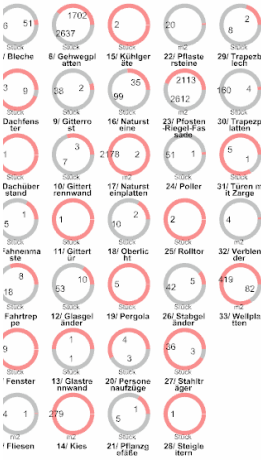
Materials Re-usability / Items



Materials Re-usability / Groups



Estimated Carbon Footprint



KAR MATERIAL INVENTORY

Use Approach Manual Mode

Manual Mode

Produktgruppe
// Bleche

Name
// Attikablech, 3,205m lang

ATTRIBUTE	VALUE
Einheit	Stück
Menge	134
CO2	28242
Name	Attikablech, 3,205m lang
Farbe	#878581
Höhe	3205mm
Ausführung	glatt
Standort	Hermannplatz 5-10 1
Kategorien	Fassadenelemente
Stärke	215mm
Zusatzinformationen:	3mm
Breite	415mm

Show?
On USE!

Report Type
Totals Report

whit

Centrum för cirkulärt byggande

Bygg- och fastighetssektorns gemensamma arena för cirkulärt byggande



Marknadsplatsen

Sveriges samlade marknadsplats för återbruk och cirkulärt byggande. Här kan företag och organisationer annonsera och efterlysa återbrukbara byggvaror. Marknadsplatsen är synkroniserad med CCBuilds produktbank och inventeringsapp.

Marknadsplats



Referensprojekt

Låt dig inspireras och lär från projekt med fokus på återbruk och cirkularitet i bygg- och fastighetssektorn.

Referensprojekt



Digitala tjänster

CCBuilds digitala tjänster stöttar övergången till cirkulära flöden. Använd dem för att inventera och värdera resurser eller som stöd för cirkulär materialhantering. Tjänsterna har flera integrerade delar: inventeringsapp, produktbank, marknadsplats och värdeanalys.

Digitala tjänster

CCBUILD

Centre for a Circular Building industry

- **Take care of existing buildings and structures**
- **Design for adaptation and flexibility**
- **Optimize the balance consumption of energy and material**
- **Reduce**
- **Reuse**
- **Recycle**
- **Use renewable resources**
- **Reduce waste**