

eHealthy living

The role of eHealth technologies in meeting the EU's economic, societal and healthcare challenges

"eHealth could, with its capacity for innovation, significantly improve the wellbeing of patients"

"eHealth is critical to the delivery of a world class health system"

eHealth week

James Reilly, Françoise Grossetête, Maria Badia I Cutchett, Maria Iglesia-Gomez

Medical devices:

Peter Liese, Nora Berra, Marina Yannakoudakis and John Bowis



SME action plan

Daniel Calleja Crespo, Paul Rübig, Nick Small

Plus: ADHD, pyrotechnic articles, anti-Greek sentiment in German politics and coverage of the Parliament Magazine's Chinese investment roundtable

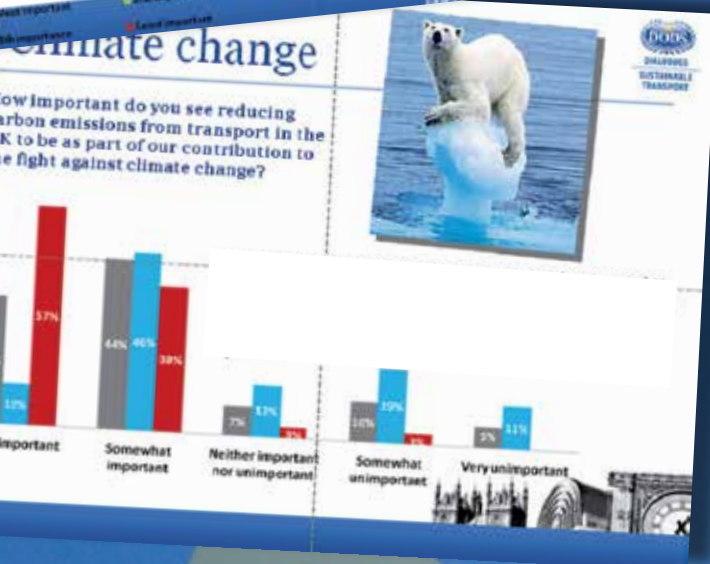


NEW

Parliament Magazine Polling Quantitative Research



ParliMag Polling is a new service providing direct insights to the opinions of the European Parliament. It gives you the opportunity to find out what MEPs know and think about your organisation and policy interests. You can even track how successful your Public Relations campaigns are at improving the perception of your company.



ParliMag Polls are conducted according to the guidelines of the British Polling Council and all client information and results are treated with complete confidentiality.

Reports will take 4-6 weeks to complete from the date of field entry and dependent on the number of clients in the **ParliMag Poll**.

Want to know more?

Contact Emille Robert: emille.robert@dods.eu



SHELTER

INNOVATE TO RENOVATE

Energy renovation of buildings has a great influence on the European Union 2020 goals as buildings are responsible for about 40% of energy consumption in the EU. What is maybe less known is that social housing in particular plays a key role in this strategy: 25 million social housing units account for 12% of the housing stock in the EU27 and these units are responsible for 18% of the total final energy consumption.

Taking into account the significant role that renovation of social housing can play in achieving the EU 2020 goals, it is key to ensure that the renovation process takes place in an effective and coordinated way among all actors involved in the renovation chain.

This is currently not the case.

In fact, energy efficiency is far from being integrated fully in Social Housing Organisations' renovation and maintenance programmes. **It is to overcome this lost opportunity that the SHELTER project was launched in 2010.**

Over three years, the SHELTER consortium has worked to develop and facilitate new models of cooperation between professionals and relevant stakeholders, inspired by integrated design. The project's consortium, composed of a university, six social housing providers from five countries and three European associations representing SMEs, social housing providers and architects have established that improving cooperation between professionals involved in renovation of social housing will be a major step towards meeting the aims of the European Union regarding the energy performance of buildings. Such an improvement will also deliver significant benefits in terms of



higher comfort and lower fuel-bills for Social Housing tenants.

Therefore, SHELTER has tried to pinpoint which exact procedures will significantly improve the energy renovation processes in the social housing sector. The SHELTER project has produced an in-depth analysis of existing renovation processes and completed a survey on current practice across Europe through questionnaires and personal interviews with representatives of the housing sector. Different project delivery methods have been tested in six real refurbishment projects of the participating Social Housing Organisations' building stock.

RECOMMENDATIONS FOR PUBLIC AUTHORITIES

Analysing the results of the survey and the conclusions drawn from the pilot projects, the three European associations, EBC (European Builders Confederation), CECODHAS Housing Europe (The federation of public, cooperative & social housing) and ACE (Architects' Council of Europe) have developed recommendations for public authorities. With these recommendations,

public authorities are encouraged to draft calls for tenders in a way that will promote the effective coordination of professionals and hence the energy saving strategy of any social housing organisation. It is for example very important, when deciding to expand the lifespan of a building, that the Social Housing Organisation defines a renovation strategy including a final energy saving goal. Social Housing Organisations must be aware of all the project delivery methods that can be used, in order to use the most suitable one.

The recommendations also highlight the importance of the architects' role in energy renovations. Indeed their engagement leads to the implementation of holistic design and sustainability. The construction sector in Europe is mainly composed of crafts, small and medium-sized enterprises. However these are often excluded from tender design. By ensuring that the legislative framework facilitates the establishment of consortia of small and medium enterprises, Social Housing Organisations will be able to contract small local enterprises to undertake the works. SHELTER's recommendations also recall the importance of adequate long-term



financing schemes as planning of works is determined by available finance.

The full document of the recommendations can be downloaded from the Shelter Website in the "Project results" section.

FINAL CONFERENCE IN DUBLIN – 22ND MAY

The final conference of the project will take place in Dublin (Ireland) on 22nd May. It will be the occasion to review renovation market trends and their implication for Social Housing Providers. Tested innovative coordination and project delivery methods in the renovation and construction supply chain with concrete examples from SHELTER Pilots will be presented. Financial schemes and access to capital will also be discussed. Finally the recommendations to public authorities developed by the project will be presented.

Attendance is free of charge and interpretation in EN/FR/IT is provided – To register: www.buildup.eu/events/35525

For more information about the SHELTER project: www.shelterproject-iee.eu

A Build Up community is also dedicated to the project: www.buildup.eu/communities/coordofprofessionals

Contact details:

EBC: www.eubuilders.org

CECODHAS: www.housingeurope.eu

ACE: www.ace-cae.eu

FUTURE OF INTELLIGENT ENERGY EUROPE

IEE projects are very important for associations such as EBC, ACE and CECODHAS. Indeed they give the opportunity to turn EU policies into action. Especially in the construction sector, which is mainly composed of crafts, small and medium-sized enterprises, IEE projects are a means to help our members with the national implementation of EU directives which are often very challenging. They are also an opportunity to prove to decision-makers what can be done. This is why we encourage the uncompromised continuation of the IEE programme under the new "Horizon 2020" programme, with an earmarking of the budget for these actions in the future.



SHELTER PROJECT TEAM