

ARCHITECTS' COUNCIL OF EUROPE

2015
ANNUAL REPORT
& 2016
OUTLOOK



ARCHITECTS' COUNCIL OF EUROPE
CONSEIL DES ARCHITECTES D'EUROPE

THE ARCHITECTS' COUNCIL OF EUROPE (ACE)

is the representative organisation for the architectural profession at European level.

ACE'S MISSION IS

- to influence, through advocacy, EU legislation and policies that impact on our strategic priorities;
- to be an influential and valued source of authoritative information for the architectural profession in Europe;
- to act as the unified voice of the architectural profession in the European institutions;
- to be an effectively networked representative for EU architects and practices;
- to create an enabling practice and regulatory environment for architects & practices;
- to demonstrate the role of architects in creating a truly competitive, enriching and sustainable Europe.

TO THIS END, ACE APPLIES ITS CORE VALUE SETS;

- credible, relevant, reliable;
- informed, influential, timely;
- innovative, strategic, visionary.

ACE'S VISION is to make a difference, and to advance architecture as a strategy for innovation, leading to greater competitiveness and profitability.

ACE COMPRISES MEMBER ORGANISATIONS that are the nationally representative regulatory and professional bodies in the EU Member States, the Accession Countries and other European countries with a special status in relation to the EU. Through them, the ACE represents the interests of over half a million architects.

ACKNOWLEDGEMENTS

The ACE acknowledges all those who have contributed to our work during the past year and helped us to progress towards and realise our objectives. These include

2015 Board Members: President, Luciano Lazzari, Board Members Dubravko Bacic, Lionel Dunet, Nicholas Galabov, Wolfgang Haack, Lars Jarle Nore, Paula Huotelin, Eugen Panescu, Georg Pendl, Pierre-Henri Schmutz and Sara Van Rompaey.

ACE Work Group Chairs: Margaret Hynds o'Flanagan, Michel Procès, John Graby, Thomas Maibaum, Ruth Schagemann, Ian Pritchard, Judit Kimpian and Antonio Borghi.

Design ©Tobenotobe by Filigrane Benoît Toussaint



Photo cover:
LONDON AQUATICS CENTRE
London, UK

Architect:
Zaha Hadid Architects

Photo: Hufton Crow.



ARCHITECTS' COUNCIL OF EUROPE
CONSEIL DES ARCHITECTES D'EUROPE

ARCHITECTS' COUNCIL OF EUROPE

2015
ANNUAL REPORT
& 2016
OUTLOOK

TABLE OF CONTENTS

PRESIDENT'S REPORT	4	STRATEGIC ALLIANCES AND NETWORKS	18
SECRETARY GENERAL'S REPORT	5	TREASURER'S REPORT AND FINANCIAL OUT-TURN FOR 2015	19
HIGHLIGHTS	6	PRIORITIES, POLITICAL CONTEXT AND OBJECTIVES FOR WORK AREAS IN 2016	20
POLICY & STRATEGY	9	ACE GOVERNANCE	23
ACCESS TO THE PROFESSION	12	MEMBER ORGANISATIONS	24
PRACTICE OF THE PROFESSION	13		
RESPONSIBLE ARCHITECTURE	14		
EU-FUNDED PROJECTS	16		
COMMUNICATIONS	17		



PRESIDENT'S REPORT

Luciano Lazzari

IN 2015 WE SET OUT TO

- establish a Future & Strategy group – to help us develop a long-term Political Vision and a short-term focus;
- help EU Architects to be more globally competitive, working with DG TRADE/DG GROW;
- maintain our focus on evolving regulation (re-regulation rather than de-regulation);
- work better – and be more representative;
- rationalise work groups to ensure objectives are mutually reinforcing, developing more activity around three macro areas – Access to the Profession, Practice and Responsible Architecture - to achieve greater critical mass and better coordination.

WE ALSO FOLLOWED-UP WORK ON THE **ACE MANIFESTO** NAMELY TO:

- promote Responsible Architecture – for a sustainable future;
- advance the highest quality professional standards – to safeguard the public interest and ensure global competitiveness;
- optimise professional mobility – to stimulate jobs & growth in the EU.

IN FURTHERANCE OF THE MANIFESTO, WE DEVELOPED A SET OF POLICY PAPERS:

- to promote the role Architects can play in helping to achieve EU targets for reducing energy consumption in buildings;
- to demonstrate the importance of the architect's role in renovating existing buildings and to promote greater energy literacy, incentives for rehabilitation and the reduction of fuel poverty;
- to advocate Quality-based Selection and architectural design competitions in public procurement;
- to recognise the importance of Life-long Learning and the role of the profession in delivering Continuing Professional Development;
- to campaign for a Law on Architecture that recognises the social, economic and public value of architecture and the profession and ensure appropriate regulation to guarantee consumer protection;
- to recognise the importance of investing in education; develop greater awareness of the built environment in young people introduce architecture into the high school curriculum to create better informed future citizens and clients;
- to align levels of training in the EU with international standards (5+2) and recognise the importance of traineeship (practical experience);
- to use positive elements of EU Directives to facilitate cross-border service provision and establishment, while resisting undue de-regulatory pressures;
- to support the negotiation of binding Mutual Recognition Agreements with key countries to provide market access for architects.



SECRETARY GENERAL'S REPORT

Ian Pritchard

CORPORATE DEVELOPMENT

Future & Strategy: we began a process aimed at developing a longer term Vision and Mission for ACE. By the end of the year it was sufficiently advanced to provide the basis for the 2016 Business Plan.

EXPORT BRIEFING

ACE organised an Export Briefing for SMEs looking to internationalise their services. DG GROW / DG TRADE provided four speakers and made available a publication describing their support services for the internationalisation of SMEs.

ADVOCACY

Following the merger of DG MARKT and DG ENTR into DG GROW, we continued to work with Jürgen Tiedje's new (Services) unit on insurance issues; Martin Frohn (Professional Qualifications Directive; Transparency Review); Anna Rodriguez Perez (Public Procurement and Remedies Directives); and Antonio Paparella (ex-DG ENTR units (Construction 2020 strategy, entrepreneurialism, SMEs, export, and others (on Business Services - Fitness Checks (mirror group);

Internal Market – Directives adopted in 2014 neared the end of the 2-year implementation phase. ACE continued to work closely with Member Organisations to understand and influence, where possible, the manner in which EU legislation is being transposed nationally. This is particularly important with regard to Public Procurement where the Directive allows Member States a range of options, some ill suited to architectural services. It has also been important to react to the de-regulatory impact of work on Access to the Professions (cf. Qualifications Directive) and the evaluation of the Services Directive.

In November, we met with Commissioner E. Bienkowska (Internal Market, Industry, Entrepreneurship & SMEs) to comment on her recently published Strategy for the Single Market (cf. page 10).

Trade in Services - DG TRADE facilitated a meeting and video-conference with the United States Trade Representative (USTR) and the National Council of Architectural Registration Boards (NCARB) to explore the possibility of reaching a Mutual Recognition Agreement (MRA), given the fresh impetus of the Transatlantic Trade & Investment Partnership (TTIP). ACE also had mutual recognition talks with KIRA (South Korea) – aimed at reaching an agreement by 2017 - and CALA (Canada), where negotiations are near completion.

Construction 2020 Strategy – in March, the High Level Forum published the Strategy and recommendations based on five thematic sub-groups – investment; – skills; – sustainability, – Regulation, - and – Global Competitiveness.

Consultations - ACE responded to consultations on the Circular Economy package (DG ENV), European Skills/Competences, qualifications and occupations (DG EAC) and the evaluation of the EPBD (DG ENER). ACE also had interaction with DG CULTURE

(Mies van der Rohe conference), DG ENER (Director Dominique Ristori for Climate Change conference) and responded to a Dutch Presidency stakeholders' consultation on the EU Urban Agenda.

WORK GROUPS

In support of our policy work, staff facilitated a horizontal coordination session on Professional Mobility & Regulation involving the Qualifications-Traineeship-Continuing Professional Development; Scope of Services and Trade in Services work groups..

MEMBER ORGANISATIONS

ACE developed closer working relations with Member Organisations including participation in an export meeting with CNOA and French Foreign Affairs Ministry and a meeting with the RIBA Awards team (International Prize). Letters of support were sent to our German, Portuguese, Spanish and Turkish members following regulatory attacks from their Governments and/or EU institutions. The President also spoke at events in Bulgaria, Ireland, Italy, Poland, Portugal, Romania and Slovakia.



HIGHLIGHTS

MEETING WITH COMMISSIONER, INTERNAL MARKET, INDUSTRY, ENTREPRENEURSHIP & SMES

On 4 November 2015, an ACE delegation presented Commissioner Elżbieta Bieńkowska its initial thoughts on the Single Market Strategy, published on 28 October. While ACE considers that the Strategy contains positive elements to boost business opportunities for SMEs and facilitate service provision in the EU, it warned that undue deregulation can blur professional boundaries and undermine public confidence in providers of professional services.

ACE acknowledged Commission efforts to facilitate cross-border business services and professional mobility, underlining that 96% of architects' cross-border registration requests are already satisfied (cf. automatic recognition provided by the Qualifications Directive). ACE will discuss, with the Commission, moves to rationalise company structures (legal-form, shareholding and multi-disciplinary arrangements) to facilitate provision of architectural services across Europe. ACE also looks forward to the Labour Mobility Package, the review of the Posted Workers Directive and support for the internationalisation of SMEs (VAT simplification, clarification of company law, greater access to finance / insurance).

However, grave concern was expressed at other aspects of Internal Market legislation. ACE is critical of the removal of fee-scales for architects. As a result, the courts no longer have any basis on which to make awards during litigation, while public bodies have no reference points for drawing up public works budgets. Supported by statistics from the 2014 Sector Study, ACE contends that cross-border services are not adversely affected by the presence of fee scales - often helpful for architects from other countries and offer advantages to clients.

ACE also advocates that the proposed Services Passport remain optional and does not duplicate the European Professional Card (cf. Professional Qualifications Directive).

Regarding the Public Procurement Directive, ACE recalled that the misuse of selection criteria is a continuing barrier to SMEs, especially turnover requirements. ACE believes that the choice of procedures is too open and contracting authorities should be guided to optimum solutions and contracts below the Directive's thresholds should be more transparent.

ACE also believes that "complaints competence" should be extended to professional bodies (cf. Remedies Directives), and infringements by contracting authorities should be penalised.

ACE expressed concern at the Commission's intention to propose "specific actions to improve access to, and the exercise of, regulated professions at national level and across the EU" with the architectural profession a "priority sector". ACE stressed there are no problems with cross-border registration and with architectural services accounting for only 0.9% of construction industry output, the focus

is misplaced. Any diversity in practice is a reflection of the cultural differences that make Europe unique.

While understanding the need for strict implementation of EU Internal Market legislation, ACE called on the Commission and Member States to resist undue deregulatory tendencies that blur professional boundaries and undermine public confidence in service providers. ACE believes that deregulation cannot lead to growth which depends on the levels of investment in the building market: the key issue for growth in the architectural market is the quality that can be achieved and maintained, regardless of regulatory approach.

INTERNATIONAL EXPORT SEMINAR

ACE organised a briefing to sensitise Member Organisations to support services available from the Commission to help the internationalisation of SMEs. Member Organisations were invited to give feedback and describe their own export programmes cf. AFEX (France), NAX (Germany) and others (Netherlands, Portugal, UK). Presentations included:

Actions Lines for the Liberal Professions – covering five areas - education & training for entrepreneurship; access to markets; reduction of the regulatory burden; access to finance; strengthening the participation of the liberal professions at EU level. ACE needs to consider how entrepreneurial skills can best be delivered (through the curriculum, CPD or traineeship).

Construction 2020 Strategy (Global Competitiveness) – this work area focused on support for entrepreneurship (cf. COSME programme); better access to finance for SMEs, internationalisation and access to markets; EU expertise re: energy efficiency of buildings, green growth and resource efficiency; collaboration with international partners, funding, guarantees for international construction projects and international cooperation on regulations/standards.

Supporting the internationalisation of SMEs – 90% of global growth is already outside the EU; 60% of world GDP will be in developing/emerging markets by 2030. The Commission underlined that SMEs doing international work report greater turnover, employment and innovation.

The Commission has developed support services to address the numerous barriers that exist (access to finance, opportunities, contacts, information, regulation): "Your Europe" – business portal; "Enterprise Europe Network" (matchmaking, market access information, contacts, sector groups); overseas contact points (Japan, China, SE Asia etc.); "Export Helpdesk"; "SME Internationalisation Portal"; "European Small Business Portal"; "Missions for Growth"; "Access to Finance" database (indirect funding through a database of banks willing to lend funds); "Horizon 2020"; "COSME" (equity / debt facility); "Export Credit Guarantees"; "EUREKA" (international research fund); and "ERASMUS for Young Entrepreneurs" (EYE).

Market Access – DG TRADE is responsible for Trade Policy – market access strategies, related regulations and competitiveness. It has developed a Market Access Database (MADB) providing information on trade, tariffs and other documentation for the export of goods and services). DG TRADE has a wide-ranging negotiating agenda (Canada, USA, Japan) and is helping ACE's bi-lateral dialogues with Canada (under the CETA) and the USA (under TTIP).

Feedback from Member Organisations – AFEX (France), NAX (Germany), OA (Portugal) and RIBA (UK) gave presentations about the structures they have put in place to help architects export services. While they typically avail of support at national level, they were glad to learn of the additional support at EU level. They showed interest in developing closer links and sharing information amongst themselves and wondered if ACE could facilitate this in any way.

Next steps - international section on ACE website - ACE developed an international section of its website, with links to AFEX, NAX and DG GROW networks, databases and portals. ACE has joined the Commission's Liberal Professions Forum and will consider how to facilitate a network for architectural export, develop a CPD module for exporters and develop a brochure on working internationally.

TALLINN SEMINAR AND DECLARATION

"Internationalisation & Responsibility"

As part of the Spring General Assembly held in Tallinn, Estonia, a Special Session was organised on the theme "*Internationalisation & Responsibility*" to explore international synergies to tackle urban & social issues such as climate change, heritage conservation, urban regeneration and social inclusion. The session allowed for the presentation of best practice examples in these areas. Mario Cucinella, founder of MCA, presented several projects carried out in the framework of G124, a group of young architects under the leadership of Renzo Piano, working at transforming unused spaces in Italy's suburbs.

Pedro Ravara, Vice President of the OA, Portugal, underlined the importance of taking account of local needs and using local knowledge/material using the example of a project in Mozambique.

Esa Mohamed, UIA President, presented the Malaysian Green Rating Tool, the first of its kind adapted to tropical climate and local priorities, practices, culture and environment.

Elizabeth Chu Richter, AIA President, presented on-going research and communication initiatives of the AIA to raise public awareness of the role of architects in addressing health, social equity and mitigation of natural risks, and Jane Duncan, RIBA President Elect, recalled that the future of the profession depends on engagement with emerging economies.

Tallinn Declaration

At the end of the session the ACE, UIA and AIA Presidents signed a Declaration, highlighting the key role of the architectural profession in tackling the local and global challenges of our time, especially with regard to climate change, urban regeneration, social inclusion and heritage conservation. They recalled that these challenges are intrinsically linked and cannot be overcome separately. They also stressed that the architectural profession has the responsibility to tackle the challenges posed by climate change as it has a unique expertise in designing low-carbon, resource-efficient, resilient, smart, healthy and inclusive built environments.

They underlined the importance of urban regeneration, and the ability of the architectural profession to plan/design built environments in an holistic manner, taking into consideration economic, social,

environmental, political and cultural aspects of irreplaceable spiritual, social and economic value and stressed the importance of investing in architectural education to provide high quality professionals able to make better places that address the challenges we face. They undertook to promote, in their respective organisations, the unique expertise of the architectural profession in designing better places for the well-being of humanity and future of our planet.

The Tallinn Declaration is available on the ACE website.

ACE ENERGY DAY

The EU held its Sustainable Energy Week (EUSEW) in Brussels in June. The week-long series of events focused on Europe's low-carbon future, decentralised energy, smart-energy solutions, sustainable mobility, renewables, smart cities, energy efficiency, energy-intensive sectors, the Energy Union, energy democratisation and other energy-related topics.

This year also focused on consumers' role in the new Energy Union, driving the EU towards its sustainable goals in energy efficiency, renewables and greenhouse gas emissions.

A key part of the EU's strategy is the renovation of older buildings, using innovative and energy efficient retrofitting solutions. A recent report "*Energy Renovation: The Trump Card for the New Start for Europe*" provides a detailed overview of how transforming Europe's building stock will dramatically reduce the energy we consume and the green house gases we produce. The report states that the renovation of older buildings is not only instrumental in reaching energy targets, but also in creating economic growth and jobs. "Energy renovation will stimulate a new wave of technological innovation," the report concluded. With building renovation so key to the EU's energy strategy, a series of Energy Days was organised across Europe during EUSEW, with hundreds of sessions to promote secure, clean and efficient energy.

iNSPiRe partner ACE hosted one of these days, in which three FP7 EEB projects took part, including iNSPiRe, LEEMA and A2PBEER. The event organised by ACE Project Officer, Veronika Schröpfer and introduced by ACE Executive Board member Sara Van Rompaey, provided visitors with the opportunity to find out more about iNSPiRe's retro-fitting innovations and catch up with the latest developments.

COP 21 EVENT – "ARCHITECTURE, THE CLIMATE OF THE FUTURE"

On the opening day of the UN Climate Change Conference (COP21) ACE, the International Union of Architects (UIA), the National Council



of the Order of French Architects (CNOA) and the International Council of French Architects (CIAF), organised an international conference “Architecture, the Climate of the Future”. The main focus of ACE, UIA and CNOA was a round table, where architects, scientists and policy-makers discussed the solutions that Architecture can bring to the challenges posed by climate change, at building and city levels.

In a video message, Dominique RISTORI, Director General of DG ENER at the EU Commission, stated that *“Architecture is a central actor in the energy transition”* and *“we need your expertise to contribute to raising public awareness, through the preparation of concrete construction and renovation projects”*.

In her introductory speech, Catherine JACQUOT, CNOA President, said that in developed economies, *“the reduction of green house gas emissions and reduced energy consumption will lead to a paradigm shift in our lifestyles and in the way we design and construct the built environment (...) Architects have a great responsibility in this major paradigm change”*.

During the round table, architects Kenneth YEANG, Edward MAZRIA, Frédéric BONNET and Kjetil Traedal THORSEN, engineer Thierry SALOMON, Mayor of Evry Francis CHOUAT and MEP Karima DELLI discussed how to design more resilient/sustainable buildings and cities.

In his conclusion, ACE President Luciano LAZZARI welcomed the leadership shown by the EU in recent years to drive forward improvements in the European building stock. He stressed that Europe must concentrate on the renovation of existing buildings and the regeneration of its cities. *“I would like to see a future where Architects are universally recognised as a large part of the solution, a future where an architect could have the same credibility as a doctor at the scene of an accident and can confidently say: I am an architect, I can help”*.

To mark the occasion the four organisers released a Manifesto for Responsible Architecture presenting Architects’ commitment to tackle the challenges posed by climate change. The Manifesto consists of key recommendations to address climate change through the built environment, both at city and building levels. It recalls that Architecture is a powerful force, in the medium term and at low-cost, for reducing greenhouse gas emissions and adapting our societies to the inevitable side effects of climate change. Through this Manifesto, the four organisations call for the implementation of decisive policies to stop the uncontrolled growth of cities, eradicate the injustice related to the allocation of resources, slow down the climate exodus, anticipate exposure to natural or industrial risks and put an end to the depletion of natural resources across the planet. By the end of 2015, the Manifesto had been signed by around a thousand people.

Video messages, Presidents’ speeches, Manifesto and replay of the conference are available on the ACE website.





POLICY & STRATEGY

ACE FUTURE & STRATEGY DEVELOPMENT

At the beginning of 2015, the Board established an arms-length group to develop a long-term Vision and Strategy for ACE, bearing in mind its specific nature, the various needs of its members and action required - for ACE, its Member Organisations and the wider profession.

The group employed a traditional methodology including: a review of the Operating Environment; prioritisation of Stakeholders; identification of critical themes; confirmation of ACE's Mission; development of a set of Core Values; agreement on a future Vision and identification of Objectives and Implementation Guidelines. It then looked at the Strengths and Weaknesses of ACE (internal), the Opportunities available and Threats we face (external) [SWOT analysis].

While the potential list of Stakeholders was long, it was agreed that ACE cannot realistically look in too many different directions at the same time. Nonetheless it was noted that the members are a mix of registration bodies, professional bodies and hybrids – while they represent architects, offices or architecture. However, rather than always underlining points of difference, it was agreed that it behoves ACE to stress the Common Ground that unites us.

It was confirmed that ACE's central role is to seek to influence, through advocacy, EU legislation and policies that impact on our strategic priorities – and its Mission is to make a difference, by advancing architecture as a strategy for innovation.

We identified three Strategic Priorities:

- advancing highest professional standards – to safeguard public interest and ensure global competitiveness;
- optimising professional mobility – to stimulate jobs & growth;
- promoting responsible architecture – to improve quality of life.

and three sub-themes in support of each of these:

- Professional Standards – Education, Training & Professional Development, advocating for an enabling regulatory environment and promoter greater voluntary convergence around the ACE Deontological Code;
- Professional Mobility – responding to the challenges of globalisation, developing resources to assist the practice of architects and assisting entrepreneurship;
- Responsible Architecture – recognising the responsibility of architects in renovation, retro-fit and reducing energy consumption in buildings, working for recognition of the value of design and recognising the importance of research and innovation.

Further medium term objectives are being developed to contribute to delivery of these, always looking to ensure they are Specific, Measurable, Achievable, Realistic and Time-related.

Once the Assembly has agreed on what we want to do, we must determine how we are to do it. This will require the preparation of an Advocacy Plan – in tandem with the Member Organisations – who have a role to play in the ordinary European decision process. Here, the ACE work groups are of crucial importance and will be challenged to help identify short to medium term objectives, confirm their contributions and draw up Roadmaps.



MUTUAL EVALUATION OF THE REGULATED PROFESSIONS – OVERVIEW OF THE REGULATORY FRAMEWORK IN THE BUSINESS SERVICES SECTOR BY USING THE EXAMPLE OF ARCHITECTS

ACE was shocked at the content and timing of this Communication. It was supposed to be published at the end of 2014 with an invitation for Member States to respond, via National Action Plans, in the Spring of 2015. Instead, the evaluation was not published until mid-July, calling for comments by the end of August. As far as we are aware, the Commission did not issue a consolidated document – but had already called for the National Action Plans back in the Spring.

We can see that the greater part of this evaluation is identical to the text submitted to the Peer Group cluster meetings held in September 2014 and was based, therefore, on responses to the 2014 proportionality questionnaires. Few adjustments were made in the light of the cluster meetings and in any event, the late publication meant that Member States were unable to use this to prepare their National Action Plans. Indeed, this may explain why some Member States failed to prioritise this activity.

The report is not only based on old material, but contains evidence of “mission creep”, with new sections on company form, joint practice, insurance and additional conclusions on fees / tariffs – all of which relate to the evaluation of the Services in the Internal Market Directive, and not the Evaluation of rules governing access to the regulated professions (cf. article 59 [transparency] of the Qualifications Directive). Despite assurances to the contrary, the report contains tendentious recommendations (though were had been assured that none was envisaged).

Finally, in spite of the foregoing, we were dismayed to note that the “findings” had already been fed into an early draft of the Single Market Strategy, dated 16 July (recommendations related to “Reforming regulated professions”), thereby pre-empting and pre-judging the outcome of the Peer Review.

SINGLE MARKET STRATEGY

The Strategy aims to respond to the economic crisis, consolidate the internal market, promote more innovation and help business start-ups.

Helping SMEs and start-ups to grow - ACE welcomes any simplification of VAT regulations; company law; regulatory requirements; access to finance; bankruptcy laws; barriers to innovation. The Single Member Company should reduce the costs of company registration.

Professional regulation - ACE contests the claim that ‘cross-border service provision and mobility ... are hindered by regulatory differences and reserves of activities’ – leading to limited consumer choice, entrepreneurship and employment, higher prices. 96% of architects’ cross-border registration requests are satisfied – so the differences cannot be that great.

ACE believes that the proposal to assess professional regulation for architects again is totally unnecessary. The profession already underwent a proportionality assessment in 2014, though the outcome was limited in quality, inaccurate and tendentious – and a number of

Member States have not produced National Action Plans as they do not consider this to be a priority.

Access to the profession - it would be unwise to lower standards to increase numbers entering the profession (to force greater price competition through over-supply). With many architects unemployed in recent years and professionals seeking work outside the EU, allowing greater numbers into the market will produce more unemployment, lower standards and reduce the ability of EU professionals to compete internationally if their standards are lower. Access to the profession is determined by education which is subject to the principle of subsidiarity.

Services - ACE is seeking to clarify whether the proposed Services Passport duplicates the Professional Card option in the Qualifications Directive. The evaluation of the Services Directive has already resulted in infringement proceedings re: company form and fee-scales).

Public Procurement - in spite of the overhaul of Procurement in 2014, the Commission feels the EU can do more. Public Procurement is often carried out without the necessary business skills, technical knowledge or procedural understanding. A key challenge is the lack of data and analytical tools to allow irregularities to be detected. There are variations in national review systems, duration of procedures, levels of fees or litigation costs; and complaints are not collected in a structured manner. The Commission will encourage Member States to review procurement decisions, promote networking between review bodies, assist Member States in strengthening review bodies, improve transparency, establish registers covering the whole life-cycle of contracts, deploying data analytics and anomaly-detection tools.

ACE welcomes work in this area. Indeed, in the light of the lack of procedural understanding in procurement, some of our Member Organisations have developed design adviser schemes (where professionals advise clients on optimum procedures). ACE published guidance on Architectural Design Competitions and called on the Commission to encourage the design contest followed by a negotiated procedure, as the preferred approach for planning services.

As regards irregularities, we have proposed that professional organisations be invested with “complaints competence”, under the provisions of the Remedies Directive so they may appear at hearings on the misapplication of procurement procedures.

ACE MANIFESTO

In May 2014, ACE published a Manifesto for the European Parliament elections based on the priorities called for by Member Organisations. Seven priority themes had been identified at the Leuven Assembly and matched to work groups where possible:

- High Quality Education (Professional Qualifications work group);
- Quality-based Selection/Architectural Design Competitions, not lowest price (Public Procurement/Competitions work group);
- Professional Indemnity Insurance for cross-border work (Liability & Insurance);
- Access to International Markets (Trade in Services);
- Resist unbridled de-regulation (Regulatory Issues work group);
- Promote the architects’ role in Energy Efficiency (Environment / Sustainable Architecture work group);
- Consider the Architect’s future role, post-recession (all).

The seven themes were further distilled into the three groupings as featured in the Manifesto:

- Promoting Responsible Architecture > for a sustainable future;
- Advancing the highest professional standards > to safeguard the public interest and ensure global competitiveness;
- Optimising professional mobility > to stimulate Jobs & Growth



AMBULATORIO POLIVALENTE
'I TRE ANGELI PER LA VITA'
L'Aquila, Italy
Architect:
Virgilio/ Luciani

each supported by three policy positions:

- the architects' role in reducing energy consumption in buildings;
- the architects' role in the renovation of existing buildings;
- Quality-based Selection and Architectural Design Competitions in public procurement;
- the importance of Life-Long Learning to ensure architects' skills remain current;
- provide for a Law on Architecture that recognises the social, economic and public value of architecture and the architectural profession;
- develop greater awareness of the built environment in young people by introducing architecture into the high school curriculum;
- align EU and international levels of training;
- facilitate cross-border services; establish bottom-line regulatory position ACE can defend;
- support the negotiation of binding Mutual Recognition Agreements.

Member Organisations sent the Manifesto to candidates and ACE delivered copies to the 751 newly-elected Parliamentarians. We also compiled a list of MEPs with a background in construction on whom to focus future attention.

The policy objectives described in the Manifesto were necessarily abbreviated, so we set about asking relevant work groups to develop a short position paper in support of each these (cf. President's report on page 4). The aim was to create a suite of nine loose-leaf, policy positions backing up the Manifesto "asks" which we can use selectively for presentation to those whose support we seek.

MUTUAL RECOGNITION AGREEMENTS (MRAS)

Korean Institute of Registered Architects (KIRA), South Korea

To mark the 5th anniversary of the EU-South Korea Free Trade Agreement (FTA) the South Korean Government included KIRA Vice-President Jaeho Shim as part of a trade delegation to Brussels. The ACE President and Secretary General attended the high-level bi-lateral trade meeting, hosted by Deputy Director General DG TRADE Ignacio Garcia Bercero.

The parties up-dated each other on recent developments and KIRA invited ACE to

- sign a Memorandum of Understanding committing to further exchanges;
- use our best endeavours to conclude a Mutual Recognition Agreement (MRA) at the UIA Congress in Seoul in 2017;
- agree a programme of meetings (in the margins of others such as ARCASIA and/or ACE Assembly meetings) during 2016, with a

view to developing the text of the MRA.

National Council of Architectural Registration Boards (NCARB), USA
DG TRADE and the United States Trade Representative (USTR) facilitated a meeting for ACE and NCARB, in the margins of the TTIP, aimed at developing a MRA for architectural services. Commission negotiators have proposed a framework for professional MRAs (cf. CETA FTA with Canada). DG TRADE later invited the President and Secretary General to a video-conference with USTR, NCARB and DG GROW at which the parties exchanged initial proposals for eligibility. A further meeting is likely in the Spring of 2016.

Canadian Architectural Licensing Authority (CALA), Canada

On 1-2 October, a CALA delegation met ACE/ENACA. F Deraedt (DG TRADE) attended to up-date on next steps with the CETA ; and K Tomaras (DG GROW) supplemented information given by ACE on professional mobility in Europe. The parties:

- reviewed legislative requirements of regulators in respective jurisdictions ;
- examined protected scope of service and title in the jurisdictions ;
- considered CALA documentation mapping Canadian competences onto the requirements of the EU Directive and listed any not covered ;
- considered the ACE Scope of Services chart showing the common scope in Europe ;
- explained professional mobility and validation of qualifications in each jurisdiction ;
- explained application processes for registration ;
- considered additional requirements e.g. firm registration, PII, CPD.

Most Provincial Licensing bodies had expressed a preference to include, as part of the mutual recognition process, an interview to test for Domain Specific Knowledge. However, ACE thought this unnecessary (the PQD operates without this, it would provide less legal certainty and some Competent Authorities could be unwilling to initiate a bespoke procedure).

Proposal for demonstration of Domain Specific Knowledge - ACE
and CALA agreed to develop a proposal that retains the principle of asking candidates for Domain Specific Knowledge but offers Regulators options for satisfying this e.g. an interview; an affidavit; or a CPD course (on-line, standardised, to be undertaken during the registration process).

The parties then agreed to use best endeavours to finalise their agreement by the Spring of 2016 and submit this to the negotiating authorities for submission to the CETA MRA Committee.



ACCESS TO THE PROFESSION

Coordinator: Wolfgang Haack,
Vice-President

In addition to acting as Coordinator for this thematic area, W Haack took on responsibility for the horizontal coordination of all matters relating to Professional Mobility.

PROFESSIONAL MOBILITY

Wolfgang Haack

At a special session in Paris, it was agreed that ACE should not build its PQD policy on the minimum standards of the Commission but rather on its own, higher standards. ACE should develop positions that highlight common ground (instead of exposing differences). Earlier work on Accreditation and validation would be refreshed and expanded to include notification.

It was agreed that the **Regulatory Issues** work group would re-visit the ACE Deontological Code to establish whether it is still fit for purpose and to try to collect National Action Plans submitted in response to the PQD Article 59 transparency exercise. The RQI group would also review the ACE policy on Reserved Functions (in the light of the emerging Commission policy) and finalise the "Bottom line regulatory position ACE can defend" (using positive elements of European Directives to facilitate cross-border service and establishment, but resist undue deregulatory tendencies that blur professional boundaries).

Finally, it was noted that the **Scope of Service** work group was developing positions on insurance (for cross-border service) and fee-scales, while monitoring the Commission's study on Building Permits.

PROFESSIONAL QUALIFICATIONS DIRECTIVE, TRAINEESHIP, CPD

Margaret Hynds o'Flanagan

In 2015 the ACE Professional Qualifications Work Group was expanded to include Traineeship and CPD - in the context of Article 22 of the new PQD, which requires Member States to ensure that professionals are able to "update their knowledge, skills and competences in order to maintain a safe and effective practice and keep abreast of professional developments".

The inclusion of Competent Authorities (many of which are ACE members) in the European Commission's IMI based system for reviewing/approving qualifications for recognition through the Directive, and on-going discussions with regard to mutual recognition agreements with the US, Canada and others, also increased the Working Group's need to focus on the quality and cohesion of qualification / accreditation measures applied in Member States.

Key developments this year included:

- publication of ACE guidance document "Implementation of the modernised Directive 2005/36/EC to assist Member Organisations during transposition";
- completion of ACE Manifesto pieces ("Aligning EU and international training standards", and "The importance of Life-long learning and the role of the profession in delivering CPD");
- response to the ESCO consultation – (standard terminology for occupations, skills and qualifications) to bring it into line with Article 46 of the PQD and ensure it better reflects the knowledge, skill and competence of architects;
- presentation of ACE PQD work at the EAAE meeting in Milano on 30 August.

REGULATORY QUESTIONS & ISSUES

John Graby

The work group's main focus was on

- follow-up to the Peer Review (Commission Evaluation of rules governing access to certain regulated professions);
- finalisation of Manifesto piece on the minimum regulatory positions ACE can defend;
- assistance to the Scope of Service work group in developing political and economic arguments in support of fee-scales;
- assistance to Member Organisations (DE, ES, PT, TUR) experiencing regulatory attacks.
- response to Commissioner Bienkowska's Single Market Strategy.
- Response to Fitness Checks (cf. DG GROW REFIT Programme)

O.A.S.E. STUDY AND
COMMUNICATIONS CENTER
Düsseldorf, Germany

Architect:
HPP Architects
Photo: Ralph Richter, Sigurd Steinprinz





PRACTICE OF THE PROFESSION

Coordinator: Georg Pendl

PUBLIC PROCUREMENT / ARCHITECTURAL DESIGN CONTESTS

G. Pendl / T. Maibaum

Last year the Public Procurement / Architectural Design Contests work group worked on Guidelines / recommendations for design competitions; up-dating the '10 rules for architectural design competitions'; and up-dating the 'Master document for design competitions'.

It has also started to

- up-date the 'Design Competitions / Public Procurement Glossary';
- up-date the ACE electronic guide for procurement of architectural services;
- up-date the online Guidelines / recommendations for transposition into national law of the 2014 Public Procurement Directive (ACE web page);
- monitor the transposition process in EU Member States;
- pursue bilateral discussions with the Commission regarding our concerns in the field of public procurement and architectural design competitions.

Further action is planned to

- develop more detailed recommendations/rules in the field of ADC's;
- collect arguments for ADC's and for "best practice" in the application of the principles of transparency, non-discrimination, proportionality;
- collect examples of misuse of selection criteria, best practice in the choice of procedures and contracts below the threshold; and
- adopt a formal position in the ACE General Assembly advocating 'complaints competence' for professional bodies under the Remedies Directive.

SCOPE OF SERVICE

R. Schagemann

Fees policy - In the light of renewed attacks by the Commission on fee-scales ACE developed a fees policy. The Commission's 2004 "Report on Competition in Professional Services" had conceded that regulation may be justified if necessary in the public interest; proportionate; and justified / necessary for good practice. Its website also states that there are three reasons why some regulation of profession services is necessary: asymmetry of information between customers and service providers; externalities, as services might have an impact on third parties; 'public good' (of value to society in general).

While the market is supposed to regulate the economy with minimal State control, economists such as Thomas Piketty illustrate the impossibility of regulating architectural quality by pure market-tools. Large clients frequently prefer to avoid false economies that, in the long run, compromise both quality and cost. Moreover, to be able to evaluate the thresholds described in the Public Procurement Directive, there is an obvious need for public authorities to have

some kind of reference on which to base assumptions of planning costs. Meanwhile, it is difficult for courts to litigate or make awards if there are no clear descriptions of services and their worth.

The ACE policy argues that the profession urgently needs tools to describe services in a standardised way and roughly define a band of possible costs. There are numerous ways of calculating an architect's fee: time spent; time estimated; floor area (m²); percentage; lump sum; incentive fee. ACE has directed its efforts to describing the scope of service – while leaving it to independent bodies to calculate its worth. Given that the scope of service varies from one country to another, it is likely that the honoraria will also be different, so it is up to the Member Organisations to find their own remuneration levels, taking into consideration national specifics.

Insurance policy - in the light of the 2013 Commission Staff Working Paper published, ACE developed a position on professional liability and indemnity insurance for EU architects.

Architects' concerns relate to fairness, inefficiency and uncertainty in the construction sector, and the ACE policy urges the EU to issue guidance introducing the following requirements:

- time limits for making claims (five years after completion of services or project);
- liability relating to actual errors made (rather than unforeseen circumstances);
- apportionment of liabilities between parties (abolish joint & several / in solidum liability and consider introducing single project insurance).

Certainty and timeliness of claims - two fundamentally different approaches are taken to PII claims - the "claims arising" or the "claims made" basis for insurance. In either case, one of the areas of most concern in Europe is the very wide disparity between the time periods within which claims must be made in the different EU MS. This lack of clarity generates unnecessary litigation and should be resolved, even by way of a simplistic cut-off criterion.

Presumption of liability ('res ipsa loquitur') - in principle, there is a 'burden of proof' to substantiate allegations. While it can be accepted that, in some cases, the circumstances point directly to a fault by a specific party ("the thing speaks for itself"), it should not be assumed that building failure is always the result of an error or omission by the architect and the reversal of the normal burden of proof should only apply in exceptional cases.

The Courts - there can be a tendency (more marked in some EU States than others) for the courts to find culpable an insured party in preference to parties who may not be in a position to respond to a decision to award damages against them. The courts should not make use of architects' professional indemnity insurance to remedy defects in social provisions.

BUILDING INFORMATION MODELLING

Lars Jarle Nore

Last year, ACE set up a BIM work group to reflect on the legal, technical and financial issues surrounding BIM and its impact on the profession. It has agreed to develop a work programme to pursue the following areas of enquiry: - definition of BIM; - impact on architectural/design quality; - standardisation / data exchange; - authorship (copyright); - contracts & fees, Scope of Services, deliverables; - Liability & Insurance; - Public Procurement; - Control over intellectual services; - CPD / education; - Relations with other partners in the planning / construction chain; - structure of architects' offices (small offices, small projects); - Software Manufacturer Independence; - scientific research.



RESPONSIBLE ARCHITECTURE

Coordinator: Sara Van Rompaey

ENERGY PERFORMANCE IN BUILDINGS DIRECTIVE (CONSULTATION)

Judit Kimpian

The EPBD created a positive framework for improving the energy performance of buildings and promoting the development of useful tools to reduce energy consumption in buildings, in a challenging economic climate. It also helped to improve the fabric performance of new buildings and refurbishments. However, it has resulted in significant unintended consequences, as it does not regulate achieved building performance, the reporting of operational energy use or the intended indoor environmental quality.

ACE contends that Architecture has a major influence on occupants' perception of comfort / productivity as well as the amount of energy used to achieve this. A building's connection to its site and users, as well as its spatial and material configuration have as much impact on the energy use as the performance of its mechanical systems. ACE urges the Commission to recognise, in the EPBD, the importance of the architectural determinants of energy efficient buildings and design studies, which offer long-term cost-effective energy-saving solutions.

ACE notes that a 'performance gap' remains between the potential of the legislation on paper and the reality on the ground. EPBD's aim – to maximise a building's passive potential first – is not supported by the way in which the energy consumption of a building is calculated and benchmarked from design to operation. In practice, construction quality, commissioning, handover and maintenance pose a very high risk to operational building performance. ACE calls for the transparent/harmonised reporting/benchmarking of building energy use, the creation of national building performance indicators, the disclosure of building operating performance across all sectors and measurement/verification of energy performance in use.

Regarding NZEBs, ACE believes that the absence of clear definitions and interim targets means that the sector faces uncertainty over the regulatory framework, thus delaying the necessary investments in technology, processes and training. More clarity / guidance on NZEB definitions and conditions is needed, along with building specific requirements and a recognition of the skills gap associated with delivering such buildings.

RESPONSIBLE ARCHITECTURE WORKSHOP DURING EUROPEAN SUSTAINABLE ENERGY WEEK

On 17 June 2015, the Environment & Sustainable Architecture and Urban Issues work groups met (along with those involved in EU-funded projects and the Architects Against Climate Change initiative) to discuss the main issues on the Commission's agenda - the development of a framework of indicators for the assessment of the environmental performance of buildings, the Energy Union Strategy,



TVERRFJELLHYTTA –
NORVEGIAN WILD REINDEER
CENTRE PAVILLON
Hjerkin, Dovre, Norway
Architect:
Snøhetta
Photo: Ketil Jacobsen

the review of the Energy Efficiency (EED) and Energy Performance of Buildings Directives (EPBD) as well as the consultation on the circular economy. Attendees also participated in a workshop on non-technical barriers to renovation as part of the INSPIRE project.

In the field of Urban Issues, the WG discussed the latest developments around the EU Urban Agenda, which will be a priority of the Dutch Presidency of the EU Council in first half of 2016. The group developed policy positions in support of the ACE Manifesto on the role of architects in energy efficient construction and in urban regeneration and renovation of the building stock. It also discussed the ACE Climate Change initiative and the Round Table planned for the COP21 summit.

ARCHITECTS AGAINST CLIMATE CHANGE

Nicholas Galabov

According to the EU Commission, buildings are responsible for 40% of energy consumption and 36% of CO₂ emissions in the EU. It estimates that 35% of EU buildings are over 50 years old and 75% are energy inefficient. By improving the energy efficiency of buildings it estimates that total EU energy consumption could be reduced by 5-6% and CO₂ emissions lowered by about 5%. Furthermore, it is now widely acknowledged that the construction sector is a major consumer of natural resources (water, wood, sand). Therefore, buildings offer great untapped potential in the fight against climate change. They can play a major role in mitigating climate change and adapting the built environment to the side effects of climate change which are essential in order to increase the resilience of our societies.

Early last year, the ACE Executive Board decided to start an initiative to enhance the role of the architectural profession in addressing the challenges posed by climate change, both in mitigation and adaptation. It will highlight solutions that Architecture can bring at building and city scales and promote the architect's holistic role across different fields of intervention (building design, renovation, urban planning, etc.) and throughout the life cycle of buildings.

In 2015, ACE responded to a consultation of the European



Standardisation Committee (CEN) on the development of Adaptation to Climate Change standards for Buildings & Construction as well to a Commission's consultation on the Circular Economy.

The initiative culminated in the organisation of an international conference on the theme "Architecture, the Climate of the Future" on the opening day of the COP21 summit in Paris and the publication of a Manifesto on Responsible Architecture.

In 2016, the ACE will explore ways to better connect the initiative with EU-funded projects and consider possible communications (video, brochure) and policy actions.

ENERGY EFFICIENCY DIRECTIVE

Judit Kimpian

In November the EU Commission launched a public consultation on the review of the EED, foreseen for the second half of 2016. This will focus on Articles 1, 3, 6, 7, 9-11, 20 and 24 of the Directive and is of crucial importance as the Commission has called on Member States to treat energy efficiency as an energy source in its own right in its Energy Union Strategy of February 2015. The European Council agreed the objective of saving at least 27% of energy by 2030 compared to projections and requested the Commission to review the target by 2020 "having in mind an EU level of 30%". The existing policy framework should therefore be updated to reflect the new EU energy efficiency target for 2030 and to align with the overall 2030 Framework for Climate and Energy. The ESA-UI Work Group will prepare the ACE response to this consultation.

RESPONSE TO DUTCH GOVERNMENT SURVEY ON THE EU URBAN AGENDA

In July 2015, ACE responded to a Dutch Government survey to identify themes that will be part of the EU Urban Agenda (one of the Dutch Presidency's priorities in first semester of 2016). This aims to better coordinate EU policies to reflect cities' needs and to involve cities in EU policymaking more strongly / directly. ACE put forward the following themes: 1) New strategies and tools for integrated urban

development, 2) Energy Efficiency at urban scale, 3) Cities as hubs for innovation and entrepreneurship, 4) Improving urban mobility, 5) Cultural heritage, 6) Social innovation for redesigning urban communities.

RESPONSE TO THE PUBLIC CONSULTATION ON CIRCULAR ECONOMY

In August, ACE responded to the public consultation on the EU Circular Economy Strategy. ACE recalled the key role of architecture in saving natural resources / raw materials in the construction sector and underlined the importance of recyclability of construction products.

FRAMEWORK OF CORE INDICATORS FOR THE ASSESSMENT OF THE ENVIRONMENTAL PERFORMANCE OF BUILDINGS

Judit Kimpian

Following the 2014 Communication on Resource Efficiency Opportunities in the Building Sector, the EU Commission (DG ENV) set up a Steering Committee to supervise the development of a framework of core indicators for the assessment of the environmental performance of buildings. ACE representative Judit Kimpian contributed to the EU Joint Research Centre's working document "Identifying macro-objectives for the resource efficiency of EU buildings". Public consultation expected: 2016; final deliverables: June 2017.

WORLD GREEN BUILDING COUNCIL – EUROPE LEADERSHIP AWARDS

ACE again partnered the WGBC Europe Regional Network's biennale Europe Leadership Awards, established to promote leadership on sustainability and inspire best practice in building projects, business practice and public policy. ACE was represented in the jury by Nicholas Galabov, Dr. Judit Kimpian and Dr. Veronika Schröpfer. Winners of the Awards can be found on ACE website.



EU-FUNDED PROJECTS

Project Officer, Dr. Veronika Schröpfer

In 2015 ACE participated in five EU-funded projects. Work continued on the three FP7 projects (7th Framework Programme): LEEMA, iNSPiRe and A2PBEER and the ERASMUS+ project, in cooperation with the European Association of Architectural Education. A new Horizon 2020 project started on CPD for nearly zero energy buildings (PROF/TRAC).

All projects relate to the building sector and address issues related to sustainability, energy efficiency and building renovation, e.g. developing innovative materials and technologies, CPD, training and better architectural education. Through these ACE seeks to promote the architects' role in building sustainably and energy retrofitting. Three of these projects presented their results, i.e. the innovative materials and technologies they developed, during the first ACE Energy Day during the European Sustainable Energy Week, Brussels (June).

LEEMA

(January 2012- December 2015)

www.leema.eu



LEEMA finished by the end of this year and has successfully developed five novel, inorganic insulation materials and building-insulation masonry components that are suitable for applications both in new and retrofitted buildings. The developed materials have significantly lower embodied energy (70-90%) and a lower unit cost (25-30%) compared to commonly used insulation materials. The loose filling materials and binders, based on mineral tailings, are used for the development of formed products like Fibre Boards, Expanded Perlite Boards and Insulating Bricks. The new products are called 3i as they are inorganic, insulating and incombustible. They have competitive properties and a significantly reduced carbon footprint compared to their commercial counterparts.

iNSPiRe

(October 2012- September 2016)

www.inspirefp7.eu



iNSPiRe tackles the problem of the high-energy consumption of the existing building stock by producing six different systemic renovation kits that can be applied to residential and office buildings from the outside of the building, allowing the occupant to stay inside. They aim to reduce the primary energy consumption of a retrofitted building to lower than 50kWh/m²/year. The innovative nature of the kits is that they integrate different retrofit components into insulated, prefabricated building envelopes. These components include HVAC systems, lighting and shading systems, pipes and ducts, and energy generation systems. A highlight of 2015 was that the demonstration building in Madrid was retrofitted and opened for site visits during the Architecture Week in October and will be open for architecture students to visit in the future. Moreover ACE organised a very productive workshop with the TA 3 members on non-technical

barriers and the architects' perception of the renovation packages in Brussels in June, which directly influenced the further development and market introduction of the kits. The demonstration building in Ludwigsburg is just about to finish its renovation and will be shown to the local chamber of architecture during their architecture day in June 2016.

A2PBEER

(October 2013- September 2017)

www.a2pbeer.eu



A2PBEER has the objective of developing a systemic energy efficient buildings' retrofitting methodology for public buildings and will take advantage of synergies derived from interventions at district level. A2PBEER retrofitting solutions include technologies already available and more innovative ones developed within the project, such as "high performance envelope retrofitting", with super-insulated façade panels and smart windows, "smart lighting systems" combining LED and natural light, and the "Smart Dual Thermal Substation", a new approach to district heating. A "kit-concept" will be applied in the development of new solutions in order to deploy adaptable and affordable solutions. Together with LIT, ACE has published an article on A2PBEER in the April edition of the Design and Build Review online magazine. A highlight of 2015 was the launch of the project video.

PROF/TRAC

(March 2015- February 2018)

www.profrac.eu



PROF / TRAC

This new Horizon 2020 project started at the beginning of March and aims at developing and maintaining an Open Education Platform for Continuing Professional Development. This platform addresses technical experts, engineers, architects and building managers involved in nZEB design and construction. Especially the collaboration between these professions is necessary to develop mutual understanding of each other's disciplines and combine skills to achieve optimal nZEB construction and retrofitting in terms of performance quality, energy efficiency and cost effectiveness. The developed European qualification scheme will be part of a life-long-life learning process for continuing development and up-skilling of professionals. The first step is the mapping of existing skills and qualifications in the EU and to compare them with the required skills for nZEBs. Thereafter these will be matched with existing qualifications, education programmes, post-initial training supply and accreditation/ certification structures, also linked to the BUILD UP skills actions. ACE Member Organisations from Italy and Slovenia are part of the consortium, and the Danish, Irish, Croatian and Czech MOs may take part in the second round of the project.

ERASMUS+:

The 'Wicked' project (September 2014- August 2017)

<https://www.facebook.com/pages/ACE-EAAE-Erasmus-project/821358584626291>

This project 'Confronting Wicked Problems: Adapting Architectural Education to the New Situation in Europe' is organised in three Think Tanks for the areas of Profession, Heritage and Sustainability. Two Transnational Meetings are planned per year for each Think Tank, plus annual Learning/Teaching/Training Activities in order to directly implement new ideas into the architecture curriculum. ACE is represented with two experts in each Think Tank. The first Learning/Teaching/Training Activities took place in Delft, Genoa and Barcelona in April/ May. The last transnational meetings were held in Hasselt, Oslo and Milano in October/ November.



COMMUNICATIONS

Lionel Dunet

NEW GRAPHIC IDENTITY

Following the creation of the new website in 2014, ACE continued to update its graphic identity by refreshing its logo, templates for working documents and lapel pins. ACE adopted a new Customer Relationship Management (CRM) system to improve engagement with its community. It also developed new templates for communications (press releases and newsletters - ACE Info [external] and MOIS [internal])

WEBSITE

ACE created an [EU Advocacy web-page](#) including contact details of MEPs and a video about the Ordinary Legislative Procedure so that Member Organisations can better understand the EU decision-making process. A new [International web-page](#) provides information on accessing international markets, business support, research programmes, legislation and agreements. The [Events web-page](#) was up-dated to include: 'Internationalisation of Architectural Services (Brussels); 'Internationalisation & Responsibility (Tallin); 'Architecture, the Climate of the Future' (Paris). The [Online CPD Register](#) now includes CPD systems from BG, CZ, DE, ES, FR, IT and UK that meet ACE Guidelines.

SOCIAL MEDIA

ACE increased its social media presence exponentially. The Twitter account (@Ace_Cae) has become a central point of discussion with stakeholders and the number of followers has more than doubled since last January. The ACE Facebook page has nearly 3000 likes (+30% compared with January 2015) and the number of LinkedIn followers also increased by 30%.

PUBLICATIONS / SURVEYS

Powermail was acquired to allow us to create / share surveys/questionnaires more easily. The 2014 edition of the Sector Study was made available for download from the ACE Website. ACE continues to track the impact of the financial climate on the profession in Europe (cf. Economic Trends survey).

ANALYTICS

Website statistics - the ACE Website receives c. 3200 visits per month and 9700 page visits. Most viewed pages are: the Sector Study, Architects in Europe, Economic Trends Survey and How to become an architect. Newsletter statistics – Internal – opening rate 32%; unsubscribe rate 0.1%; External - opening rate 23.5%; unsubscribe rate 0.7%.

SPONSORSHIP / PATRONAGE / PARTNERSHIP

"Architecture d'Aujourd'hui" magazine (mutual dissemination, expert committees):

"Design & Build Review" – four articles per year;

"GeoBIM Conference" – mutual dissemination, possible involvement.

OTHER OBJECTIVES

ACE Graphic Charter, Member Organisations' Communication Charter, improve presentations of policies; web satisfaction survey; improve pdf template for newsletter.





ESPACE GIGA ENTERPRISE 1
Liège, Belgium
Architect:
Gérard-Lemarie & Associés
Photo: Jean-Luc Deru

STRATEGIC ALLIANCES AND NETWORKS

ACE has developed relationships with other networks to strengthen the voice of the profession in the EU.

MEMBER ORGANISATIONS – while ACE advocates common positions to the Commission and Parliamentary Committees, we rely on Member Organisations to present these to their own MEPs, Council Ministers and to National Coordinators. The Commission can cite lack of demand from the Member States in response to our proposals, so it is vital that Member Organisations take care of the national dimension.

ACE values its strategic alliances and continues to engage with partner networks to refine the effectiveness of our involvement.

EUROPEAN ASSOCIATION FOR ARCHITECTURAL EDUCATION (EAAE) – ACE re-established the Joint Working Group to provide a focus for interaction with representatives of the Schools of Architecture. This has provided the basis for a joint research bid to the ERASMUS + fund and the creation of the ACE-EAAE-Ion Mincu Prize for Best Diploma Project.

EUROPEAN NETWORK FOR ARCHITECTURAL COMPETENT AUTHORITIES (ENACA) – ACE and ENACA jointly published the findings of research undertaken to assess readiness to implement the new Professional Qualifications Directive, particularly with regard to arrangements for Traineeship. ACE also worked with ENACA on negotiations with CALA (Canada).

EUROPEAN FORUM FOR ARCHITECTURE POLICIES (EFAP) – following the dissolution of EFAP in January of last year, ACE has followed proposals to re-launch a successor organisation with similar aims which were developed at a meeting held in the margins of a conference on Architecture Policies organised under the auspices of the Luxembourg Presidency of the EU.

INTERNATIONAL UNION OF ARCHITECTS (UIA) – the Secretary General attends the annual meeting of the UIA Professional Practice Commission. It is currently developing positions on outsourcing, Building Information Modelling, plagiarism, use of unpaid interns, free services and dispute resolution. ACE also organised, with UIA, the French Order of Architects (CNOA) and the CIAF, a Round Table at the start of the COP21 Climate Change conference in Paris.

REGIONAL ORGANISATIONS – ACE is fully committed to developing a model of regional co-operation through international architectural organisations such as the Architects Regional Council of Asia (ARCASIA), the Africa Union of Architects (AUA), the Pan-American Federation of Architects' Associations (FPAA) and others.

ACE has developed contacts with registration bodies in Canada (CALA), the USA (NCARB), South Korea (KIRA) and the Caribbean Islands (CARICOM group), in response to invitations to maintain dialogue leading towards mutual recognition agreements to facilitate mobility of architects in the context of international trade agreements.

OTHER INDUSTRY BODIES: the ACE continues to work closely with other pan-European organisations in the construction industry including EFCA, FIEC, EHF and others.

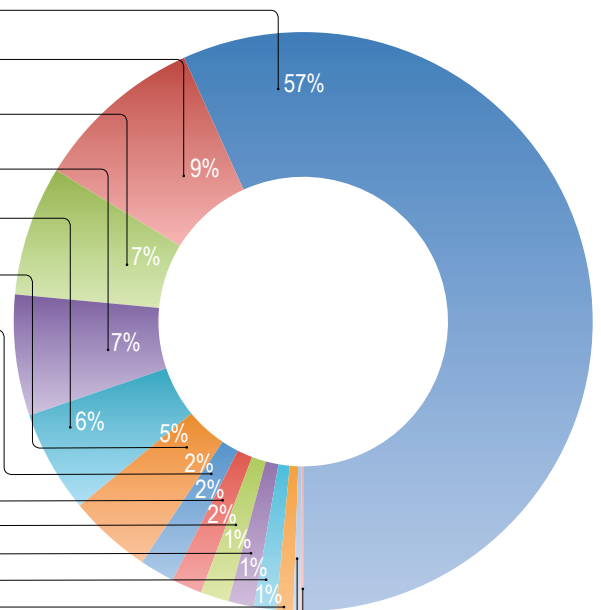


TREASURER'S REPORT AND FINANCIAL OUT-TURN FOR 2015

Treasurer Paula Huotelin

EXPENDITURE

Staff costs	€ 419.593
Executive Board expenses	€ 70.144
Projects	€ 53.642
ACE meeting expenses	€ 49.929
Premises	€ 42.191
Professional fees	€ 34.366
Other operating expenses	€ 14.354
Depreciation	€ 12.620
Communications	€ 11.765
Motor vehicle expenses	€ 10.555
Office supplies & services	€ 9.214
Insurance	€ 6.919
Maintenance	€ 2.870
Financial expenses	€ 1.109
Transfer to the reserve fund	€ 674



TOTAL EXPENSES

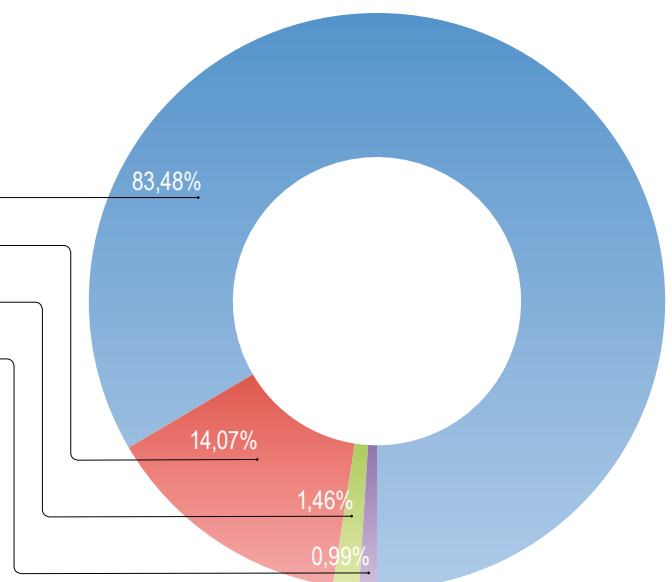
€ 739.945

INCOME

Members subscriptions	€ 617.716
Activities	€ 104.091
Financial income	€ 10.830
Recovered expenses	€ 7.308

TOTAL INCOME

€ 739.945



POLITICAL CONTEXT AND PRIORITIES FOR 2016

The **Netherlands-Slovakia-Malta** will hold the next three Presidencies of the EU Council (*"the Trio Presidency"*) and the Strategic Agenda, agreed by the European Council in June 2014, forms the bedrock of the Trio's programme that is guided by

- a Union of jobs, growth and competitiveness;
- a Union that empowers and protects all of its citizens;
- an Energy Union with a forward-looking climate policy;
- a Union of freedom, security and justice; and
- the Union as a strong global actor.

Jobs, growth and protecting citizens

To deliver sustainable economic growth and job creation, the EU will require further deepening of the single market (particularly in services and the digital agenda) and measures will be taken to help SMEs to thrive. There will be a special focus on restoring levels of investments (NB. research). And to increase the competitiveness of industry, swift progress is required on trade agreements, including TTIP. There will also be follow-up to the UN Climate Change Convention (COP21) to reduce emissions.

DUTCH PRESIDENCY

In addition to a general focus on essentials (prosperity, freedom, security) and connectivity with citizens (including civil society organisations), the Dutch Presidency aims to continue the focus on creating new jobs & promoting an innovative economy. Its work programme on competitiveness will look to remove obstacles for companies doing business in other Member States; conclude trade agreements; and protect workers against exploitation/unfair competition.

In the Internal Market & Industry priorities are: continuing examination of the Single Market Strategy [goods/services]; competitiveness across all EU policy areas; implementing the better regulation agenda; the digital single market strategy; and support for SMEs.

PRESIDENT'S PROGRAMME

The President's programme includes: enhanced collaboration with the European institutions; advocating for architects' interests in policy response to European Directives; providing political assistance to Member Organisation where appropriate; collaborating with Schools of Architecture, other professions and regional organisations; assisting professional mobility in response to the challenges of globalisation; improving our image, communications and knowledge sharing; rationalising our resources and developing architects' ethical responsibility to help mitigate the worst effects of climate change.

PRIORITY OBJECTIVES FOR ACE WORK AREAS IN 2016

In 2016 ACE proposes to focus on the following areas:

- Strategic Priority no. 1 : "Advancing the Highest Professional Standards"
- **Education, training & development** – promote greater convergence of standards, developing common approaches to traineeship, life-long learning and, accreditation; prepare for the 2017 review of the Qualifications Directive to optimise intra-EU mobility;

- **Regulation** - monitor regulation and its impact on the profession; respond to the Single Market Strategy;
- **Ethics & Trust** – up-date and promulgate the ACE Deontological Code as part of the voluntary convergence agenda within the EU (cf. SIM Directive).

Strategic Priority no. 2 : "Optimising Professional Mobility"

- **Globalisation** – work to align EU and international standards (conclude MRA with CALA (Canada) and advance negotiations with KIRA (South Korea) and NCARB (USA) to provide for the recognition of EU architects' qualifications in third countries;
- **Practice** - assist cross-border service providers by developing work on professional indemnity insurance, scope of service and contracts; promote Quality-based selection procedures and Architectural Design Competitions in public procurement, and complaints' competence for professional bodies under the Remedies Directive;
- **Entrepreneurship** – to improve the global competitiveness of EU architects, engage with European Commission programmes regarding the acquisition of business and entrepreneurship skills; develop assistance for Export.

Strategic Priority no. 3 : "Promoting Responsible Architecture"

- **Responsibility** – respond to consultation on the Energy Efficiency Directive; follow up the review of the Energy Performance in Buildings Directive; develop architects' role in renovation and reducing energy consumption; contribute to post COP21 targets;
- **Value** – work for recognition of the value of design vis-à-vis the project life-cycle, as an intelligent investment; consider the impact of architecture on the quality of life;
- **Research & Innovation** – continue to participate in EU projects, ERASMUS +; develop ACE position on new technologies including Building Information Modelling.

ADVANCING THE HIGHEST PROFESSIONAL STANDARDS

EDUCATION, TRAINING & DEVELOPMENT

Schools Programme

Collaborate with Schools of Architecture to provide a seamless transition to professional practice. Continue work on the ERASMUS + project (Confronting Wicked Problems: adapting Architectural Education to the new situation in Europe). Collaborate with EAAE to develop the ACE-EAAE-Ion Mincu Prize for Best Diploma Project.

Professional Qualifications Directive (Traineeship, Life-long learning)

Support the development of Traineeship to enhance international mobility and increase opportunities for young architects. Conclude work on Accreditation and notification.

Recognise the importance of Life-Long Learning and the profession's role in delivering CPD to ensure that architects' skills remain current, especially in energy efficiency. Monitor response to PQD article 22 (CPD); promote the development of national systems for inclusion in ACE CPD Register; develop mutual recognition with ARCASIA, AUA, FPAA; prepare for the next quinquennial review of the Qualifications Directive (2017).

ADVOCATE FOR AN ENABLING REGULATORY ENVIRONMENT

Regulatory Questions & Issues

Respond to the Single Market Strategy. Promote EU initiatives designed to help SMEs and start-ups to grow. Monitor actions designed to "improve access to and the exercise of regulated professions", both in the Single Market Strategy and the Peer Review exercise. Resist erosion of access standards / negative effects of de-regulation. Clarify differences / overlaps between the proposed Services Passport (SMS) and Professional Card (PQD).

Monitor follow up to Art. 59 Transparency Review of the Qualifications Directive (National Action Plans), and react to the evaluation of the SIM Directive (art. 15 (requirements to be evaluated) and 23 (insurance) – considering the de-regulatory impact of both. Monitor the Fitness Checks exercise arising from the Construction 2020 Strategy (cf. REFIT Programme) and undertake research to illustrate the economic value of the (architectural) profession[s].

Develop understanding of key regulatory principles that can be used to defend the architect's future. Resist de-regulatory pressures from the evaluations of the PQD/SIM Directives. Re-visit Council Resolution on Architecture to ensure that the social, economic and public value of architecture is recognised. Use positive elements of EU Directives to assist with intra-EU mobility and facilitate cross-border service provision/establishment. Monitor the development of voluntary European Service Standards.

ETHICS & TRUST

Promote ACE Deontological Code that sets a standard for the profession and protects the consumer.

OPTIMISING PROFESSIONAL MOBILITY

RESPOND TO THE CHALLENGES OF GLOBALISATION

Professional Qualifications Directive – 2017 review

Prepare for the next quinquennial review of the PQD in order to better align EU and international standards of training (5 + 2).

International programme

Negotiate **Mutual Recognition Agreements** to allow for reciprocal access to key markets. Conclude MRA with CALA (Canada). Continue dialogue with NCARB (USA); follow up MRA with KIRA (South Korea) for approval in July 2017. Further explore, with DG GROW, ways in which to help our members (especially SMEs) to be more globally competitive. Develop interaction with regional & global organisations.

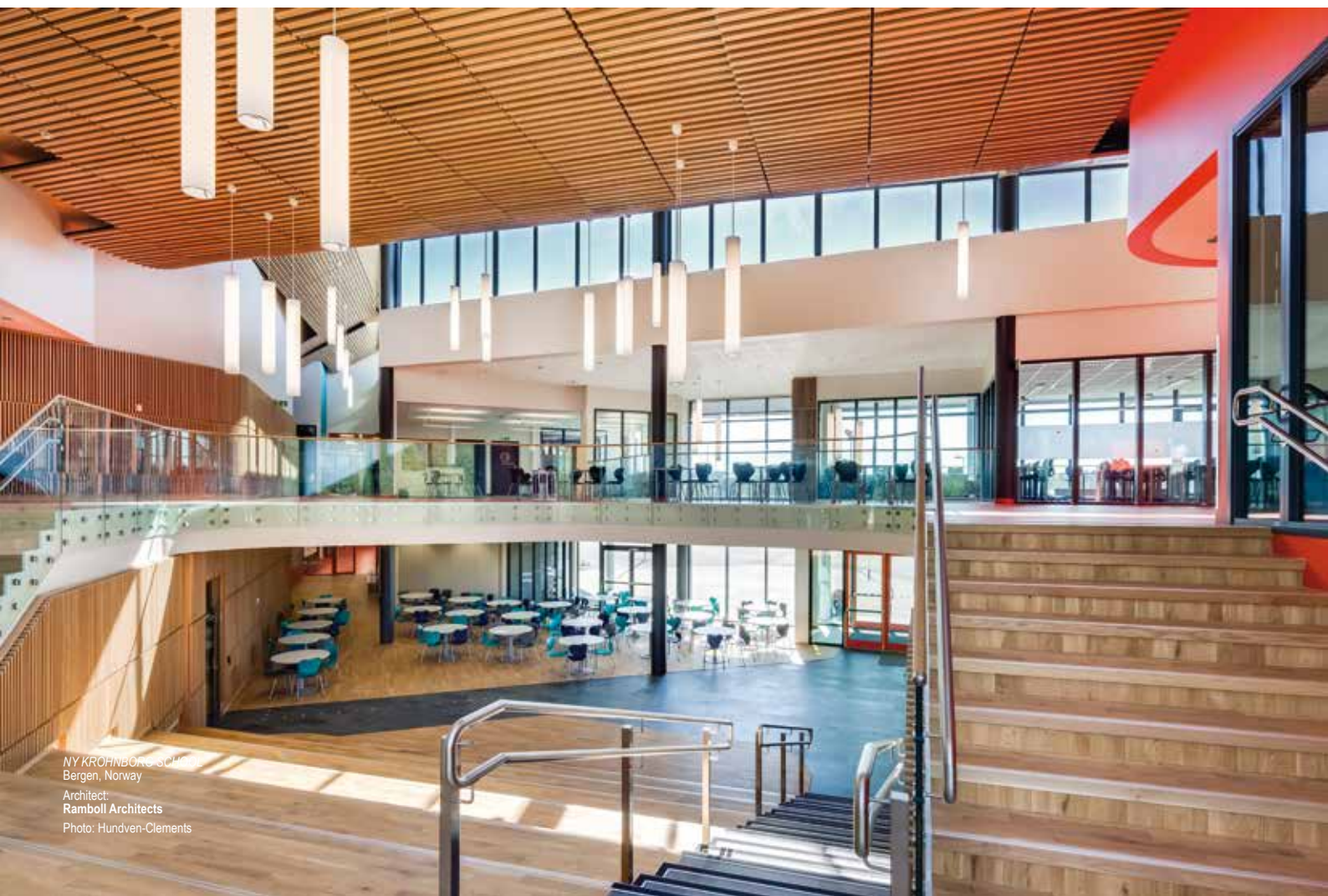
DEVELOP RESOURCES TO ASSIST THE PRACTICE OF ARCHITECTURE IN THE EU

Scope of Services, liability & insurance

Promulgate policy positions on Fees and Insurance; collaborate with the Commission on solutions to insurance problems for cross-border work. Monitor Commission's survey of Permit procedures in the Member States and participate in "informed interviews"; consider work on developing a model form of contract for cross-border work.

Public Procurement & Architectural Design Competitions

Promote ACE Transposition Guidance and Recommendations to assist Member Organisations to make representations at national



level. Advocate for Quality-based Selection and encourage Member Organisations to use options that excludes price only or cost as an award criteria for architectural services. Lobby for the best possible access of young architects and small offices to public contracts.; collect examples of mis-use of selection criteria, best practice in choice of procedure and contracts below thresholds.

Consider initiatives to up-skill those commissioning public works and encourage expertise-driven decision-making frameworks. Advocate for 'complaints competence' for professional bodies under the Remedies Directive.

Advocate for Procurement procedures, at national level, that prioritise Architectural Design Contests and the Competitive Procedure with Negotiation. Up-date Architectural Design Competitions / Public Procurement glossary; develop more detailed recommendations for design competitions; collect arguments for design competitions and best practice in the application of basic principles (transparency non-discrimination, proportionality).

ENTREPRENEURSHIP

Promote collaborative innovation strategies that enable new business models. Increase the capacity of the construction sector through collaboration and shared responsibility. Provide information on EU sources of assistance, information and funding for exporting architectural services.

PROMOTING RESPONSIBLE ARCHITECTURE

RESPONSIBILITY

Environment & Sustainable Architecture, Urban Issues

Support the advocacy work of Member Organisations during the review of the Energy Performance in Buildings Directive (re-cast) and the Energy Efficiency Directive.

Recognise the responsibility of architects to help achieve EU targets to reduce energy consumption in buildings and recognise the responsibility of architects in the renovation of existing buildings; promote incentives for "rehabilitation" to reduce fuel poverty.

Architects Against Climate Change initiative

Develop a group to consider how Member Organisation may best respond to the threat of Climate Change and mitigate its worst effects (cf. 2030 Framework for climate and energy policies).

VALUE OF DESIGN

Work for recognition of the value of design and its relevance, through the project life-cycle, as an intelligent investment.

Work for the recognition of the role architects play in the design of the built environment for a sustainable future.

Demonstrate the impact of architecture on the quality of life.

RESEARCH & INNOVATION

Research & Innovation (EU-funded projects)

Recognise the importance of Research & Innovation. Develop case-based, evidence-based and performance-based knowledge references. Foster diversity and strengthen competitiveness through promotion of innovation.

Maintain Research & Innovation panel to evaluate requests to participate in EU-funded projects, advise on existing project work, disseminate the results of EU project work and deliver content for a EU CPD platform. Circulate information on opportunities for architects and Member Organisations.

Building Information Modelling (BIM)

Develop ACE reflection on BIM; agree BIM definition; explore impact of BIM on design quality; consider standardisation / data exchange in relation to BIM. Consider copyright issues; contracts, fees, scope of service and deliverables; liability & insurance; BIM and public procurement; control over intellectual services; CPD and education; relations with other partners; office structures; software manufacturer independence and scientific research. Monitor work in developing a CEN standard.

COMMUNICATIONS PROGRAMME

Following the launch of the new website in 2014, ACE will continue to consolidate its new graphic identity. It will make greater use of the new Customer Relationship Management (CRM) system to improve engagement with its community. New templates for press releases and newsletters are bedding down and the acquisition of Powermail make it easier to create and share surveys and questionnaires.

The Advocacy page, International page and Events page are all new features of the website and will be further developed. The ACE online CPD Register has attracted 7 nationally approved systems and will grow further in 2016.

ACE enjoyed a growth in contacts through social media last year, doubling the number of Twitter users and achieving a 30% increase in the number of Facebook and LinkedIn followers.

Analytics – we are tracking the number of visits to the site per month, the number of page visits, analysing most viewed pages, open rates for internal / external newsletters (and numbers unsubscribing).

We have a couple of arrangements with magazines – mutual dissemination, provision of articles.

And in 2016, we will develop our Graphical Charter, Member Organisations' Charters, develop a web satisfaction survey and improve the pdf template for the newsletter.



ACE GOVERNANCE

The Architects' Council of Europe is an international, not-for-profit association. It consists of a General Assembly; an Executive Board; and a Permanent Secretariat in Brussels.

The General Assembly is composed of Delegates from all Member Organisations. It is the sovereign body and meets twice a year to adopt ACE policies and budgets.

The function of the Executive Board is to execute policies formulated by the General Assembly and to ensure the proper administration of ACE. It is composed of 11 Members.

The Secretariat's main function is to support the governance structure of ACE and act as the permanent interlocutor of the EU institutions in furtherance of ACE's advocacy work.

2015 ACE EXECUTIVE BOARD

Luciano Lazzari



Italy
President

Wolfgang Haack



Germany
Vice-President, Coordinator
Access to the Profession
(& Professional Mobility pro tem)

Georg Pendl



Austria
Coordinator
Practice & Trade in Services

Sara Van Rompaey



Belgium
Coordinator
Responsible Architecture

Paula Huotelin



Finland
Treasurer

Dubravko Bacic



Croatia
Schools
Programme

Lionel Dunet



France
Communications

Lars Nore



Norway
Building Information
Modelling

Eugen Panescu



Romania
Urban Issues

Nicholas Galabov



Bulgaria
Climate Change

Pierre-Henri Schmutz



Switzerland
Professional Mobility

ACE SECRETARIAT - STAFF

Ian Pritchard



Secretary General

Caroline André



Head of Administration

Gerardo Ambrosecchia



Communications
& Administration Officer

Pierre Obajtek



Policy Officer

Veronika Schröpfer



EU Projects Officer



ARCHITECTS' COUNCIL OF EUROPE
CONSEIL DES ARCHITECTES D'EUROPE

LIST OF MEMBER ORGANISATIONS

AUSTRIA	Bundeskammer der Architekten und Ingenieurkonsulenten BAIK
BELGIUM	Conseil National de l'Ordre des Architectes CNOA Fédération Royale des Sociétés d'Architectes de Belgique FAB
BULGARIA	Chamber of Architects in Bulgaria CAB Union of Architects in Bulgaria UAB
CROATIA	Croatian Chamber of Architects CCA
CYPRUS	Cyprus Architects Association CAA
CZECH REPUBLIC	Czech Chamber of Architects CCA
DENMARK	Danish Association of Architects AA Danish Association of Architectural Firms DA
ESTONIA	The Union of Estonian Architects UEA
FINLAND	Finnish Association of Architects SAFA
FRANCE	Conseil National de l'Ordre des Architectes CNOA Syndicat d'Architecture SA Union Nationale des Syndicats Français d'Architectes UNSFA
GERMANY	Bundesarchitektenkammer BAK Bund Deutscher Architekten BDA Bund Deutscher Baumeister Architekten und Ingenieure BDB Vereinigung Freischaffender Architekten VFA
GREECE	Association des Architectes Diplômés SADAS-PEA Chambre Technique de Grèce CTG
HUNGARY	Chamber of Hungarian Architects MEK
IRELAND	Royal Institute of the Architects of Ireland RIAI
ITALY	Consiglio Nazionale degli Architetti, Pianificatori, Paesaggisti e Conservatori CNAPPC
LATVIA	The Latvia Association of Architects LAA
LITHUANIA	Architects Association of Lithuania AAL
LUXEMBOURG	Ordre des Architectes et des Ingénieurs Conseils du Grand-Duché de Luxembourg OAI
MALTA	Kamra tal-Periti KTP
NETHERLANDS	Bond van Nederlandse Architecten BNA Bureau Architectenregister BA
NORWAY	Association of Consulting Architects in Norway ACA Norske Arkitekters Landforbund NAL
POLAND	Association of Polish Architects SARP (from 2016)
PORTUGAL	Ordem Dos Arquitectos OA
ROMANIA	Architects' Chamber of Romania OAR
SLOVAKIA	Slovak Chamber of Architects SKA
SLOVENIA	Chamber of Architecture and Spatial Planning of Slovenia ZAPS
SPAIN	Consejo Superior de los Colegios de Arquitectos de España CSCAE
SWEDEN	Sveriges Arkitekter SA
SWITZERLAND	Conférence Suisse des Architectes CSA
TURKEY	Chamber of Architects of Turkey CAT
UNITED KINGDOM	Architects' Registration Board ARB Royal Institute of British Architects RIBA
Observer Member	
SERBIA	Union of Architects of Serbia UAS

SECRETARIAT GENERAL

Conseil des architectes d'Europe AISBL
Rue Paul Emile Janson, 29 B-1050 Bruxelles

Tel. : +32 (0) 2 543 11 40
Fax : +32 (0) 2 543 11 41

info@ace-cae.eu
www.ace-cae.eu